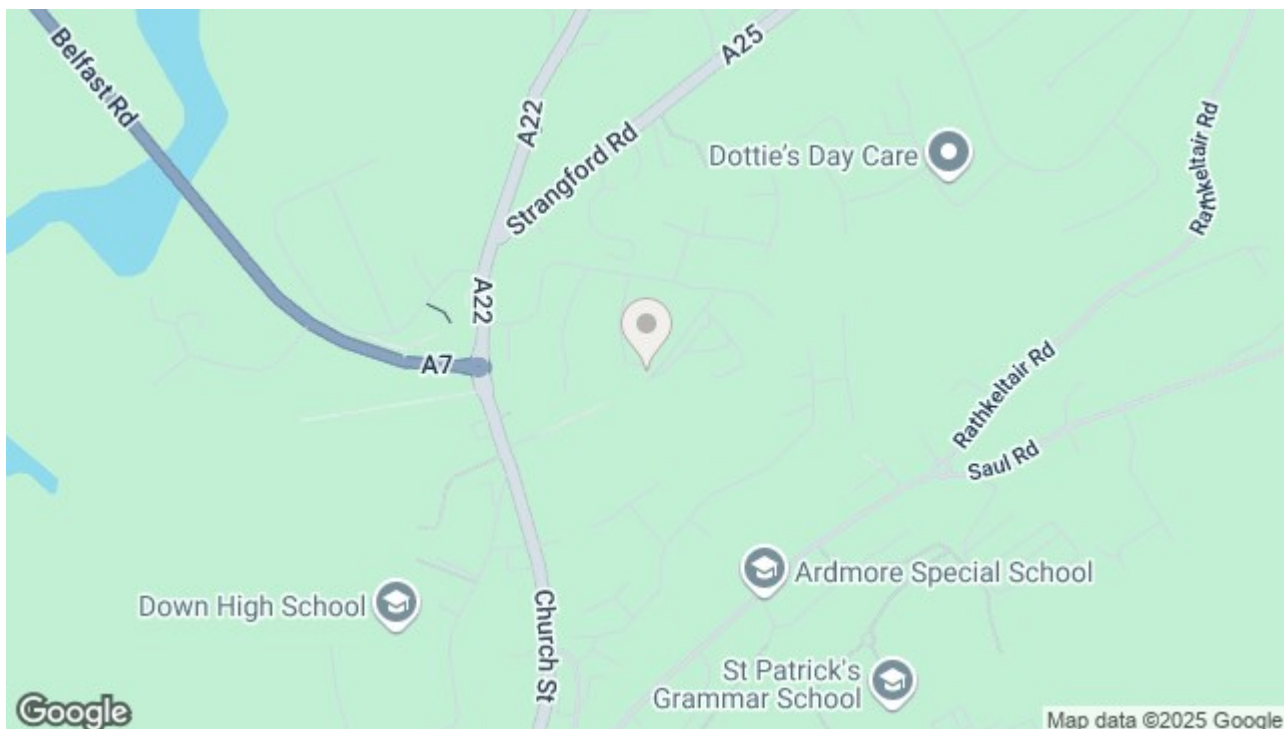




12 MALONE DRIVE, DOWNPATRICK, BT30 6UD

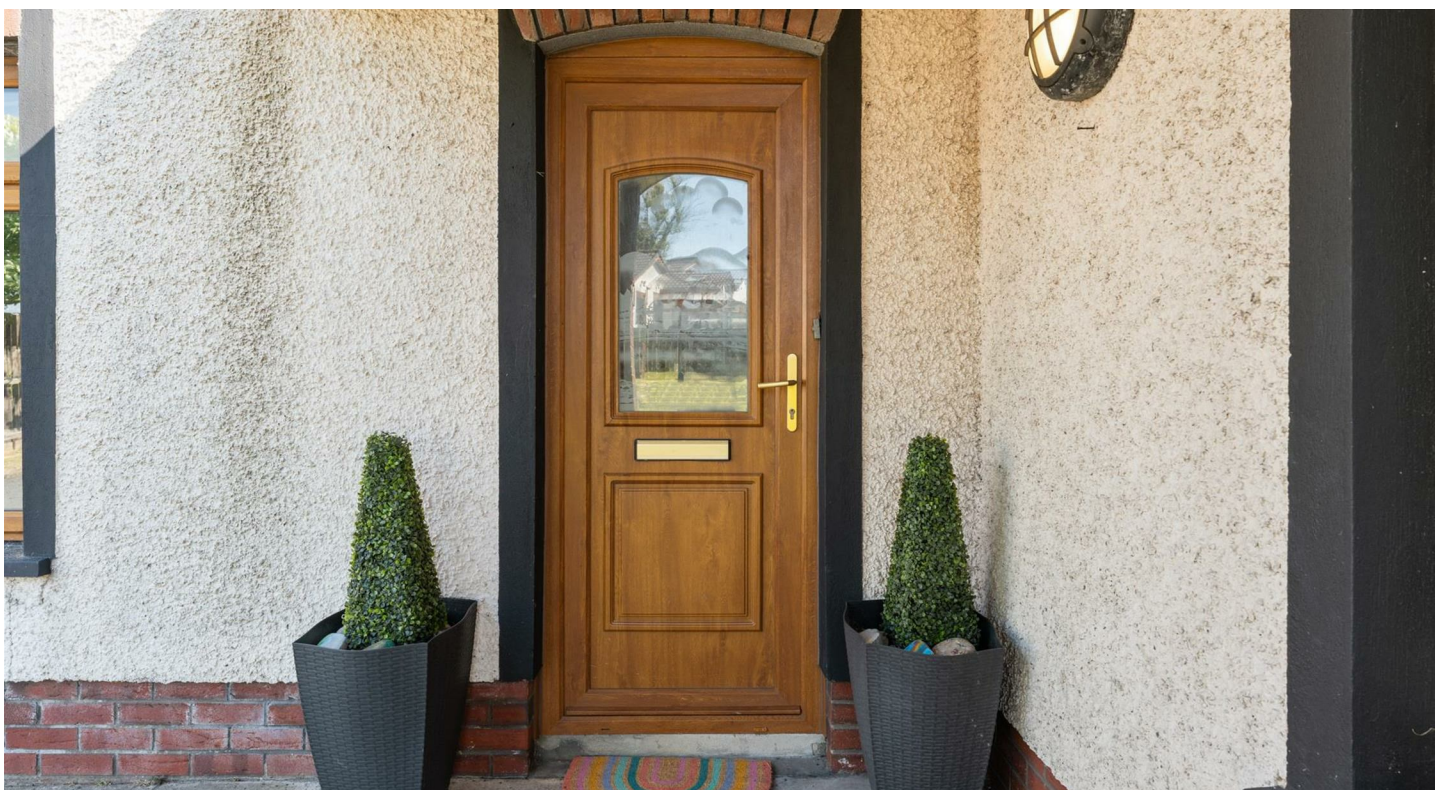


OFFERS AROUND £239,950



This well-presented detached bungalow is ideally located with easy access to the main Belfast Road, offering excellent convenience to local schools, shops, and recreational facilities. Just a short distance from the scenic Quoile River, perfect for leisurely walks and outdoor enjoyment.

The property features four spacious bedrooms, including a master with ensuite, a bright and comfortable lounge, a well-appointed kitchen with dining area, a practical utility room, and a modern family bathroom.





## At a glance:

- Detached Bungalow
- Lounge
- Utility Room
- Four Bedrooms (master with ensuite)
- Kitchen/Dining area.
- Garage

### Entrance Hall

21'6" x 8'8"

Laminated wooden flooring.  
Two Storage cupboard,  
door to:

### Living Room

13'0" x 15'5"

Solid wooden flooring.  
Open fireplace with wood  
burning stove. Window to  
front, two windows to side,  
fireplace, door to:

### Kitchen/Dining Room

16'7" x 12'0"

Contemporary high and  
low level units with  
integrated double eye level  
ovens and microwave. Gas  
hob with stainless steel  
extractor fan. Island unit  
with 1 and 1/2 sink unit. Tiled  
floor. Two windows to side,  
double doors to patio area,  
door to:

### Utility Room

11'9" x 6'1"

High and low level units  
with stainless steel sink unit.  
Tiled at splashback. Tiled  
floor. Door to:

### Bedroom 1

14'3" x 12'4"

Window to rear, door to:

### En-suite

4'10" x 6'1"

White low flush w.c. and  
pedestal wash hand basin,  
shower cubicle with electric  
shower. Fully tiled. Window to  
rear.

### Bedroom 2

9'4" x 8'9"

Wooden floor. Window to  
rear, door to:

### Bedroom 3

14'3" x 8'9"

Wooden floor. Window to  
rear, door to:

### Bathroom

White panelled bath with  
middle taps, low flush w.c.,  
pedestal wash hand basin,  
shower cubicle with wall  
shower. Tiled at splash back.  
tiled floor. Window to side,  
door to:

### Bedroom 4

8'5" x 8'9"

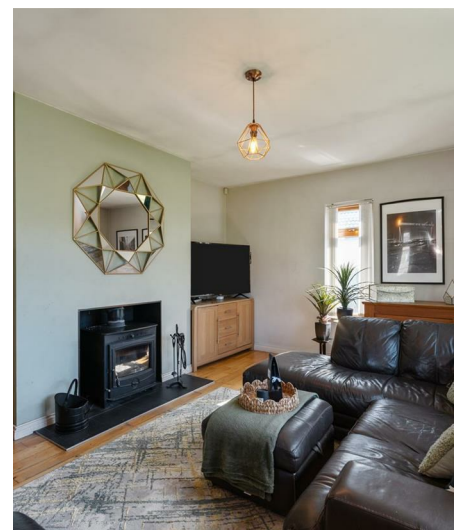
Window to front, door to:

### Garage

Up and over door.

### Outside

Tarmac driveway with ample  
parking and gardens in lawn  
to the front and rear with  
large decked area.



















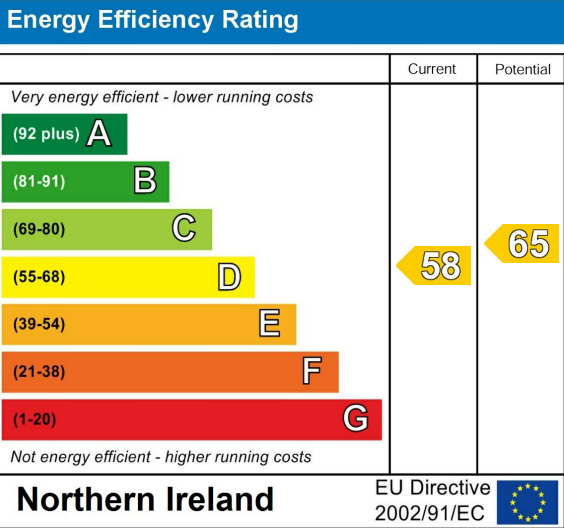






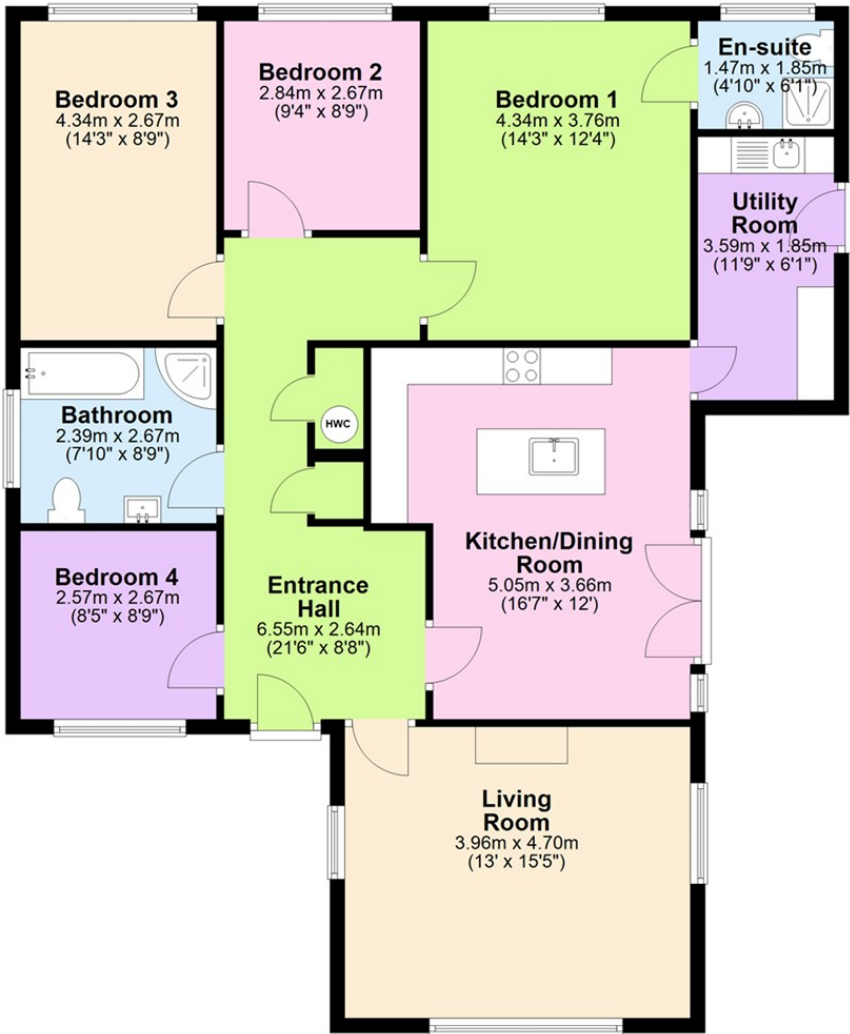








Ground Floor





Questions you may have. **Which mortgage would suit me best?**

**How much deposit will I need? What are my monthly repayments going to be?**

To answer these and other mortgage related questions contact our mortgage advisor on 028 4461 4101.

Your home may be repossessed if you do not keep up repayments on your mortgage.

**We DO NOT charge for initial mortgage consultations. We may charge a fee on completion depending on circumstances. Our typical fee is £250, however, please confirm with Mortgage Consultant at time of appointment.**

Please note that we have not tested the services or systems in this property. Purchasers should make/commission their own inspections if they feel it is necessary.

[ULSTERPROPERTYSALES.CO.UK](http://ULSTERPROPERTYSALES.CO.UK)

ANDERSONSTOWN  
028 9060 5200

BALLYHACKAMORE  
028 9047 1515

BALLYNAHINCH  
028 9756 1155

BANGOR  
028 9127 1185

CARRICKFERGUS  
028 9336 5986

CAVEHILL  
028 9072 9270

DONAGHADEE  
028 9188 8000

DOWNPATRICK  
028 4461 4101

FORESTSIDE  
028 9064 1264

GLENGORMLEY  
028 9083 3295

MALONE  
028 9066 1929

RENTAL DIVISION  
028 9070 1000



Petrie Enterprises Ltd; Trading under licence as Ulster Property Sales (Ballymena) Gareth Dallas  
©Ulster Property Sales is a Registered Trademark