



RIVERSIDE

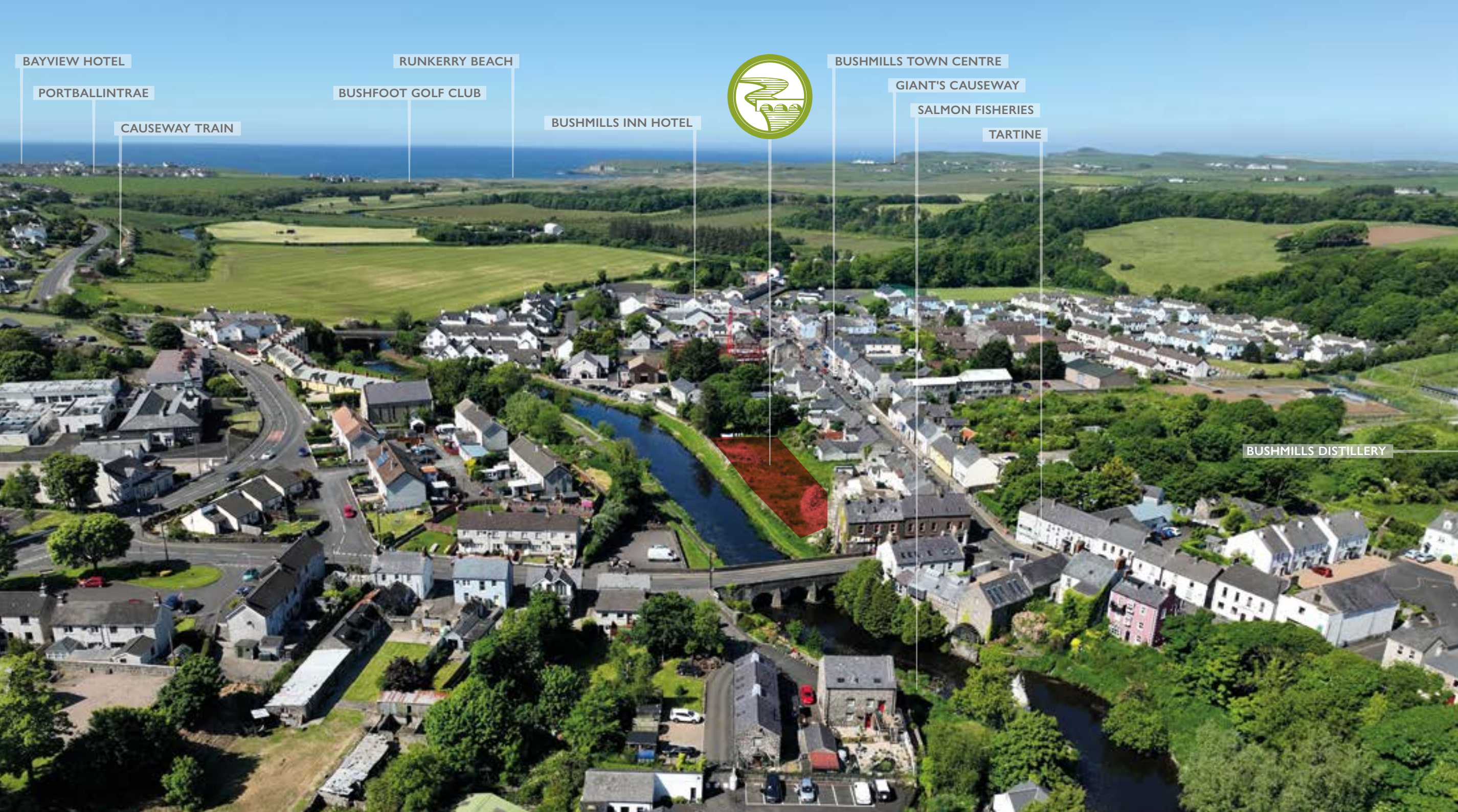
BUSHMILLS • CO ANTRIM

BEAUTIFULLY DETAILED LUXURY RIVERSIDE APARTMENTS



WELCOME TO RIVERSIDE

BRIGHT, CONTEMPORARY APARTMENTS
ON THE EDGE OF THE RIVER BUSH AND
THE RIVER WALKWAY



BAYVIEW HOTEL

RUNKERRY BEACH

PORTBALLINTRAIE

BUSHFOOT GOLF CLUB

CAUSEWAY TRAIN

BUSHMILLS INN HOTEL

BUSHMILLS TOWN CENTRE

GIANT'S CAUSEWAY

SALMON FISHERIES

TARTINE

BUSHMILLS DISTILLERY

These stunning 2, 3 and 4 bedroom apartments are 2 minutes walk from the centre of Bushmills and have been expertly designed to create the perfect life balance requirements - family space, entertainment space, balcony space and river view space.

Bushmills has earned the reputation of a vibrant tourist destination with over 950,00 visitors to the Causeway and 140,000 to the Distillery last year.

The local area is renowned as a food haven with hungry visitors travelling from far and wide to experience the many award winning restaurants, gourmet pubs, delicatessens and speciality food retailers in and around Bushmills.



RIVERSIDE
BUSHMILLS • CO ANTRIM

**WORLD FAMOUS
ATTRactions, CULTURE, HISTORY,
BEACHES, GREEN SPACES, LEISURE,
WINING AND DINING...**

...Riverside is
**PERFECTLY
placed**
right in the heart
OF IT ALL!

FOOD LOVERS HAVEN

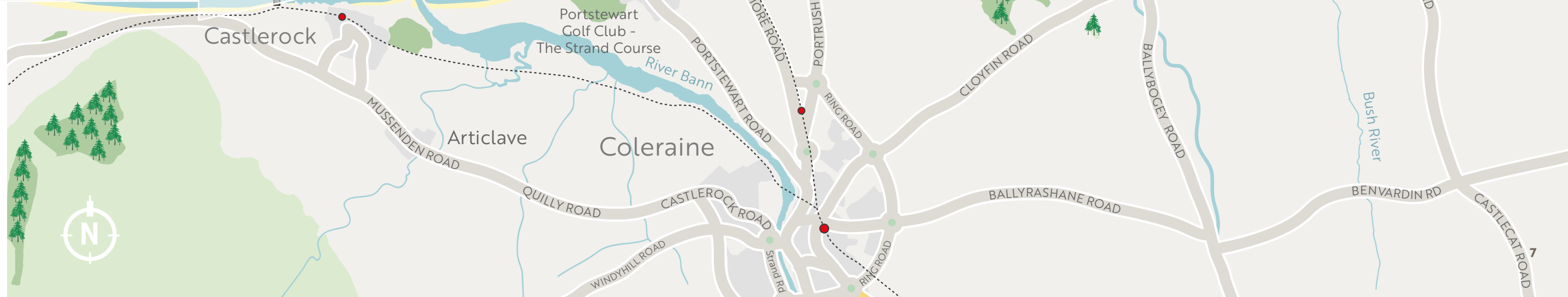
- Tartine, Distillers Arms..... 0.1 mile
- Market Square 0.2 mile
- Bushmills Inn..... 0.3 mile
- Smugglers Inn..... 1.5 miles
- Bayview Hotel..... 1.6 miles
- The Nook..... 2.4 miles
- Ramore Restaurants 6.6 miles
- Amici Ristorante 9.2 miles
- 55 Degrees North..... 6.2 miles
- Shanty..... 6.7 miles

AT YOUR LEISURE

- Bushfoot Golf Club 1.5 miles
- Portballintrae Harbour 1.7 miles
- Runkerry Beach..... 2.1 miles
- Royal Portrush Golf Club..... 5.4 miles
- Portrush Yacht Club 6.6 miles
- Carrick-a-Rede 8.3 miles
- Portstewart Strand..... 10.2 miles
- Portstewart Golf Club..... 10.2 miles

OUT & ABOUT

- Portballintrae..... 1.0 mile
- Giant's Causeway 2.4 miles
- Whiterocks Beach 4.0 miles
- Coleraine 6.9 miles
- Portrush 5.6 miles
- Ballintoy 6.9 miles
- Portstewart 8.8 miles
- Ballycastle..... 11.3 miles
- Castlerock 14.3 miles



Change your
RISE & SHINE into
GET UP & GO





Salmon Fisheries



Bushmills Inn



Bayview Hotel

REST...



Causeway Cliff Path



Bushmills Inn



Whiterocks Beach



Dunseverick



Magheracross View Point



Sunset at Whiterocks



Royal Portrush Golf Course



Runkerry Beach



Surfing at Runkerry



Whiterocks



...OR PLAY?

Portballintrae Harbour

YOU CHOOSE!



Old Bushmills Distillery



Giant's Causeway



Causeway Train, Runkerry Beach



Sunset Dunluce Castle

BLOCK A - GROUND FLOOR APARTMENTS

APARTMENT A1 | 3 BEDROOM: 1313 sq ft

APARTMENT A2 | 3 BEDROOM: 1227 sq ft



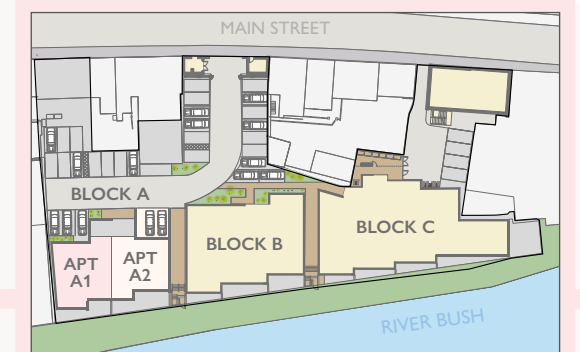
GROUND FLOOR | Apt A1

	Ft	metres
Entrance Hall with Utility Store		
Kitchen Dine Living	25'8" x 21'3"	7.88 x 6.47
Principal Bedroom	15'2" x 11'5"	4.63 x 3.48
Ensuite	8'7" x 7'4"	2.62 x 2.23
Bedroom 2	12'2" x 9'8"	4.00 x 2.98
Bedroom 3	12'1" x 8'10"	3.68 x 2.70
Bathroom	8'10" x 7'4"	2.72 x 2.23
River View Terrace		

GROUND FLOOR | Apt A2

	Ft	metres
Entrance Hall with Utility Store		
Kitchen Dine Living	38'5" x 13'4"	11.72 x 4.07
Principal Bedroom	13'9" x 11'9"	4.23 x 3.59
Ensuite	8'3" x 4'6"	2.50 x 1.39
Bedroom 2	15'1" x 9'9"	4.60 x 3.00
Bedroom 3	11'10" x 11'8"	3.61 x 3.59
Bathroom	10'4" x 6'3"	3.14 x 1.90
River View Terrace		

BLOCK A - SITE LAYOUT GROUND FLOOR APARTMENTS



BLOCK A - GROUND FLOOR PLANS APARTMENTS A1 & A2

BLOCK A - FIRST FLOOR APARTMENTS

APARTMENT A3 | 3 BEDROOM: 1313 sq ft

APARTMENT A4 | 3 BEDROOM: 1227 sq ft



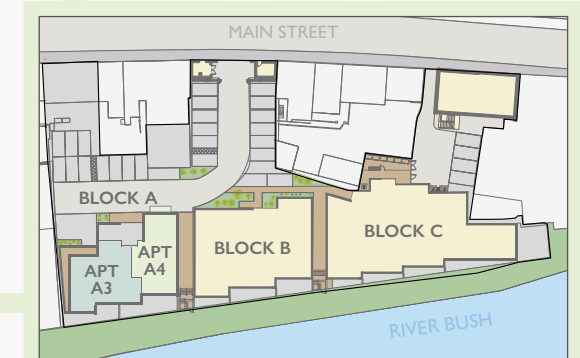
FIRST FLOOR | Apt A3

	Ft	metres
Entrance Hall with Utility Store		
Kitchen Dine Living _{max}	25'7" x 22'7"	7.81 x 6.89
Principal Bedroom _{max}	14'1" x 13'0"	4.28 x 3.96
Ensuite	8'3" x 4'7"	2.50 x 1.39
Bedroom 2 _{max}	13'0" x 9'6"	3.95 x 2.90
Bedroom 3	14'5" x 9'1"	4.39 x 2.77
Bathroom	8'7" x 6'3"	2.62 x 1.90
River View Terrace		

FIRST FLOOR | Apt A4

	Ft	metres
Entrance Hall with Utility Store		
Kitchen Dine Living _{max}	26'2" x 18'10"	7.98 x 5.72
Principal Bedroom	13'0" x 10'0"	3.95 x 3.05
Ensuite	10'0" x 4'3"	3.05 x 1.28
Bedroom 2	11'3" x 9'8"	3.43 x 2.96
Bedroom 3	11'9" x 10'0"	3.61 x 3.05
Bathroom	11'3" x 6'3"	3.42 x 1.90
River View Terrace		
Balcony		

BLOCK A - SITE LAYOUT FIRST FLOOR APARTMENTS

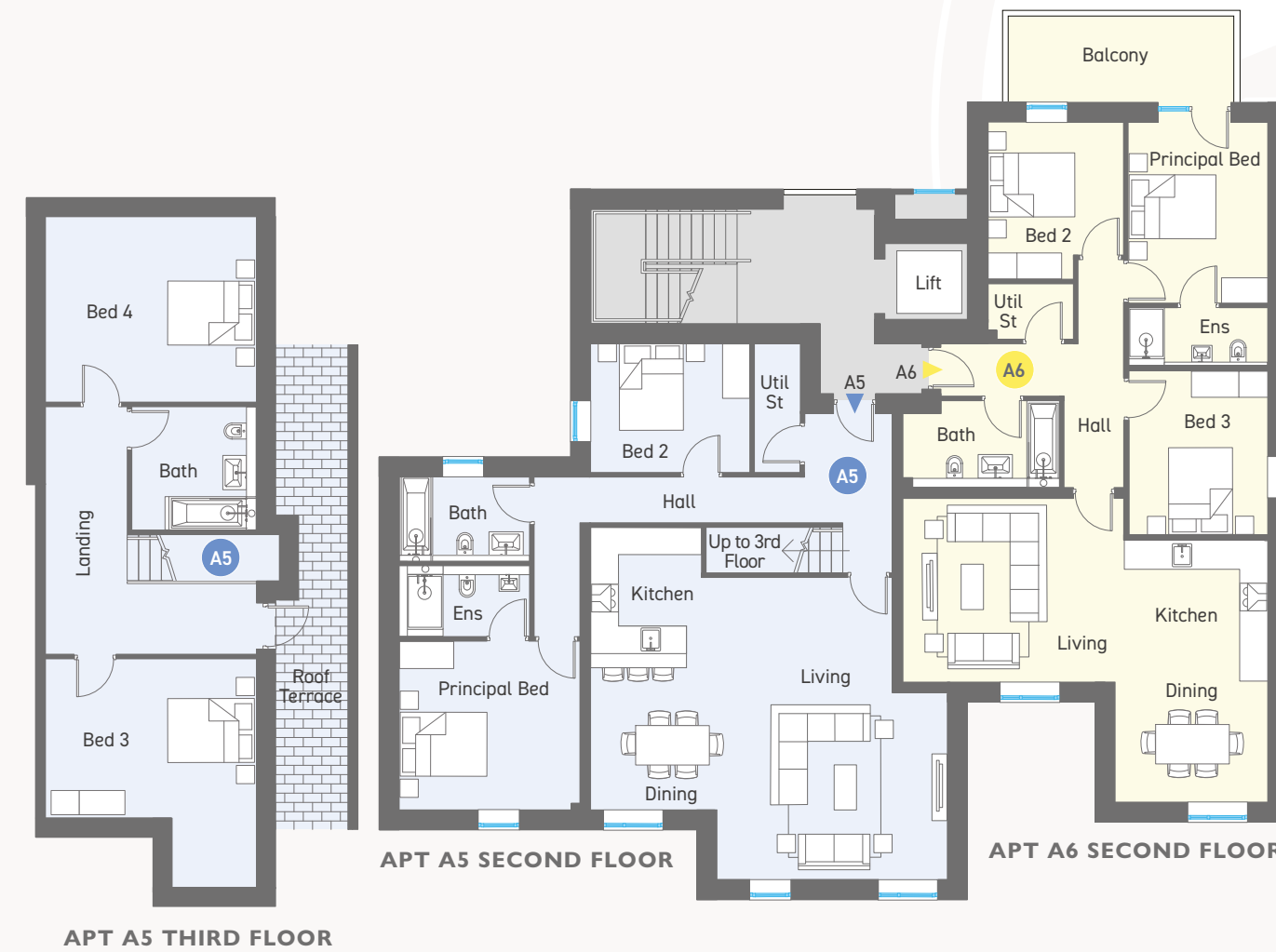


BLOCK A - FIRST FLOOR PLANS APARTMENTS A3 & A4

BLOCK A - SECOND & THIRD FLOOR APARTMENTS

APARTMENT A5 | 4 BEDROOM: 1819 sq ft

APARTMENT A6 | 3 BEDROOM: 1033 sq ft



SECOND FLOOR | Apt A5

	Ft	metres
Entrance Hall with Utility Store		
Kitchen Dine Living _{max}	25'7" x 21'8"	7.81 x 6.61
Principal Bedroom	13'0" x 12'2"	3.95 x 3.70
Ensuite	9'4" x 5'1"	2.85 x 1.54
Bedroom 2	11'5" x 9'3"	3.48 x 2.81
Bathroom	9'4" x 6'0"	2.85 x 1.84

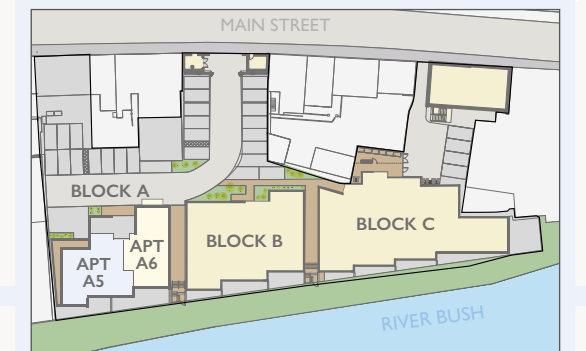
THIRD FLOOR | Apt A5

	Ft	metres
Bedroom 3	12'0" x 15'0"	3.65 x 4.58
Bedroom 4	15'0" x 13'3"	4.58 x 4.05
Bathroom	8'10" x 8'10"	2.71 x 2.70
Roof Terrace		

SECOND FLOOR | Apt A6

	Ft	metres
Entrance Hall with Utility Store		
Kitchen Dine Living _{max}	26'2" x 18'9"	7.98 x 5.72
Principal Bedroom	13'0" x 10'0"	3.95 x 3.05
Ensuite	10'0" x 4'2"	3.05 x 1.28
Bedroom 2	11'3" x 9'8"	3.43 x 2.96
Bedroom 3	11'9" x 10'0"	3.61 x 3.05
Bathroom	11'3" x 6'3"	3.42 x 1.90
Balcony		

**BLOCK A - SITE LAYOUT
SECOND/THIRD FLOOR APARTMENTS**



BLOCK A - SECOND & THIRD FLOOR PLANS APARTMENTS A5 & A6



the way YOU WANT to live

Designed for the way you want to live with
open plan kitchen living and dining areas.

Perfect for entertaining or enjoying quality
family time.

CGI shown for illustration purposes only

BLOCK B - GROUND FLOOR APARTMENTS

APARTMENT B1 | 3 BEDROOM: 1098 sq ft

APARTMENT B2 | 2 BEDROOM: 904 sq ft

APARTMENT B3 | 3 BEDROOM: 1076 sq ft



GROUND FLOOR | Apt B1

	Ft	metres
Entrance Hall with Utility Store		
Kitchen Dine Living	23'7" x 20'1"	7.21 x 6.12
Principal Bedroom	12'9" x 11'7"	3.88 x 3.54
Ensuite	9'10" x 4'7"	2.99 x 1.39
Bedroom 2	10'7" x 9'2"	3.23 x 2.79
Bedroom 3	10'9" x 9'8"	3.28 x 2.99
Bathroom	8'7" x 6'3"	2.62 x 1.91
River View Terrace		

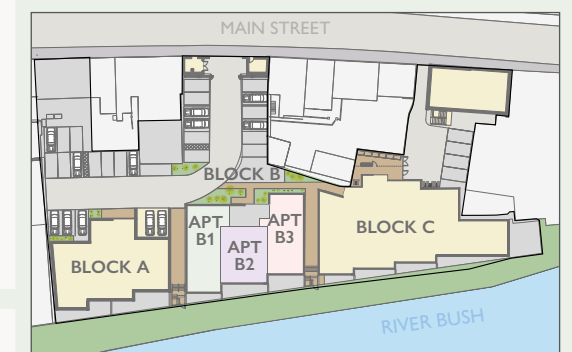
GROUND FLOOR | Apt B2

	Ft	metres
Entrance Hall with Utility Store		
Kitchen Dine Living _{max}	23'7" x 19'7"	7.19 x 5.96
Principal Bedroom _{max}	19'8" x 10'0"	6.02 x 3.04
Ensuite	8'6" x 4'6"	2.61 x 1.38
Bedroom 2	13'2" x 8'7"	4.01 x 2.61
Bathroom	8'3" x 6'8"	2.52 x 2.06
River View Terrace		

GROUND FLOOR | Apt B3

	Ft	metres
Entrance Hall with Utility Store		
Kitchen Dine Living	21'8" x 20'7"	6.63 x 6.28
Principal Bedroom _{max}	20'0" x 8'6"	6.12 x 2.57
Ensuite	9'7" x 5'5"	2.94 x 1.65
Bedroom 2	11'6" x 9'2"	3.51 x 2.80
Bedroom 3	11'6" x 9'2"	3.51 x 2.80
Bathroom	7'7" x 6'4"	2.33 x 1.92
River View Terrace		

BLOCK B - SITE LAYOUT GROUND FLOOR APARTMENTS



BLOCK B - GROUND FLOOR PLANS APARTMENTS B1, B2 & B3

CGI shown for illustration purposes only. Site layout and Floor plans are not to scale.

BLOCK B - FIRST FLOOR APARTMENTS

APARTMENT B4 | 3 BEDROOM: 1022 sq ft

APARTMENT B5 | 2 BEDROOM: 807 sq ft

APARTMENT B6 | 3 BEDROOM: 990 sq ft



FIRST FLOOR | Apt B4

	Ft	metres
Entrance Hall with Utility Store		
Kitchen Dine Living _{max}	25'2" x 20'1"	7.67 x 6.12
Principal Bedroom _{max}	12'9" x 11'7"	3.88 x 3.54
Ensuite	9'10" x 4'7"	2.99 x 1.39
Bedroom 2	10'7" x 9'2"	3.27 x 2.79
Bedroom 3	10'9" x 9'8"	3.23 x 2.96
Bathroom	8'7" x 6'3"	2.62 x 1.91
River View Terrace		
Balcony		

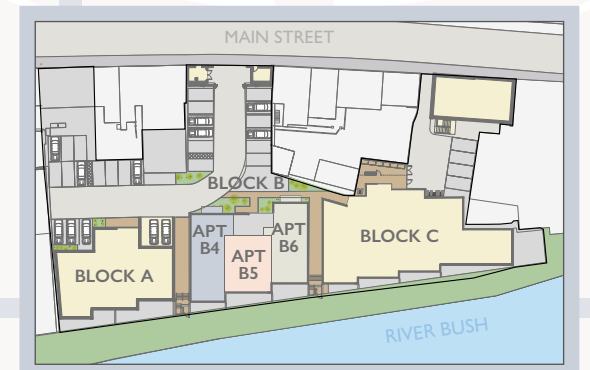
FIRST FLOOR | Apt B5

	Ft	metres
Entrance Hall with Utility Store		
Kitchen Dine Living	19'7" x 17'0"	5.99 x 5.17
Principal Bedroom	14'8" x 10'0"	4.49 x 3.04
Ensuite	8'7" x 4'10"	2.61 x 1.48
Bedroom 2	11'10" x 8'7"	3.61 x 2.61
Bathroom	8'3" x 6'8"	2.52 x 2.06
River View Terrace		

FIRST FLOOR | Apt B6

	Ft	metres
Entrance Hall with Utility Store		
Kitchen Dine Living _{max}	21'8" x 20'7"	6.63 x 6.28
Principal Bedroom _{max}	20'0" x 8'6"	6.12 x 2.57
Ensuite	9'7" x 5'5"	2.94 x 1.65
Bedroom 2	11'6" x 9'2"	3.51 x 2.80
Bedroom 3	11'6" x 9'2"	3.51 x 2.80
Bathroom	7'7" x 6'4"	2.33 x 1.92
River View Terrace		
Balcony		

BLOCK B - SITE LAYOUT FIRST FLOOR APARTMENTS



BLOCK B - FIRST FLOOR PLANS APARTMENTS B4, B5 & B6

BLOCK B - SECOND & THIRD FLOOR APARTMENTS

APARTMENT B7 | 3 BEDROOM: 1022 sq ft

APARTMENT B8 | 3 BEDROOM: 1464 sq ft

APARTMENT B9 | 3 BEDROOM: 990 sq ft



SECOND FLOOR | Apt B7

	Ft	metres
Entrance Hall with Utility Store		
Kitchen Dine Living _{max}	25'2" x 20'1"	7.67 x 6.12
Principal Bedroom	12'9" x 11'7"	3.88 x 3.54
Ensuite	9'10" x 4'7"	2.99 x 1.39
Bedroom 2	10'7" x 9'2"	3.27 x 2.79
Bedroom 3	10'9" x 9'8"	3.23 x 2.96
Bathroom	8'7" x 6'3"	2.62 x 1.91
Balcony		

SECOND FLOOR | Apt B8

	Ft	metres
Entrance Hall with Utility Store		
Kitchen Dine Living _{max}	26'8" x 17'0"	8.19 x 5.16
Principal Bedroom	14'9" x 10'0"	4.49 x 3.04
Ensuite	8'7" x 4'7"	2.61 x 1.39
Bathroom 1	9'3" x 5'0"	2.83 x 1.50

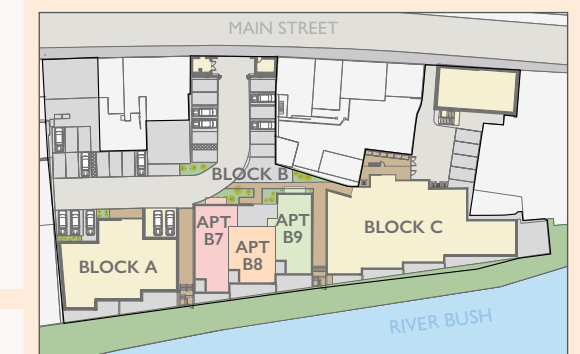
THIRD FLOOR | Apt B8

	Ft	metres
Bedroom 2	14'6" x 14'2"	4.42 x 4.31
Bedroom 3 _{max}	17'8" x 14'2"	5.38 x 4.31
Bathroom 2	8'0" x 7'0"	2.45 x 2.11
Roof Terrace		

SECOND FLOOR | Apt B9

	Ft	metres
Entrance Hall with Utility Store		
Kitchen Dine Living _{max}	21'8" x 20'7"	6.63 x 6.28
Principal Bedroom _{max}	20'0" x 8'6"	6.12 x 2.57
Ensuite	9'7" x 5'5"	2.94 x 1.65
Bedroom 2	11'6" x 9'2"	3.51 x 2.80
Bedroom 3	11'6" x 9'2"	3.51 x 2.80
Bathroom	7'7" x 6'4"	2.33 x 1.92
Balcony		

**BLOCK B - SITE LAYOUT
SECOND/THIRD FLOOR APARTMENTS**



BLOCK B - SECOND & THIRD FLOOR PLANS APARTMENTS B7, B8 & B9



PERFECTLY
proportioned and
effortlessly ELEGANT,
LIGHT FILLED
interiors



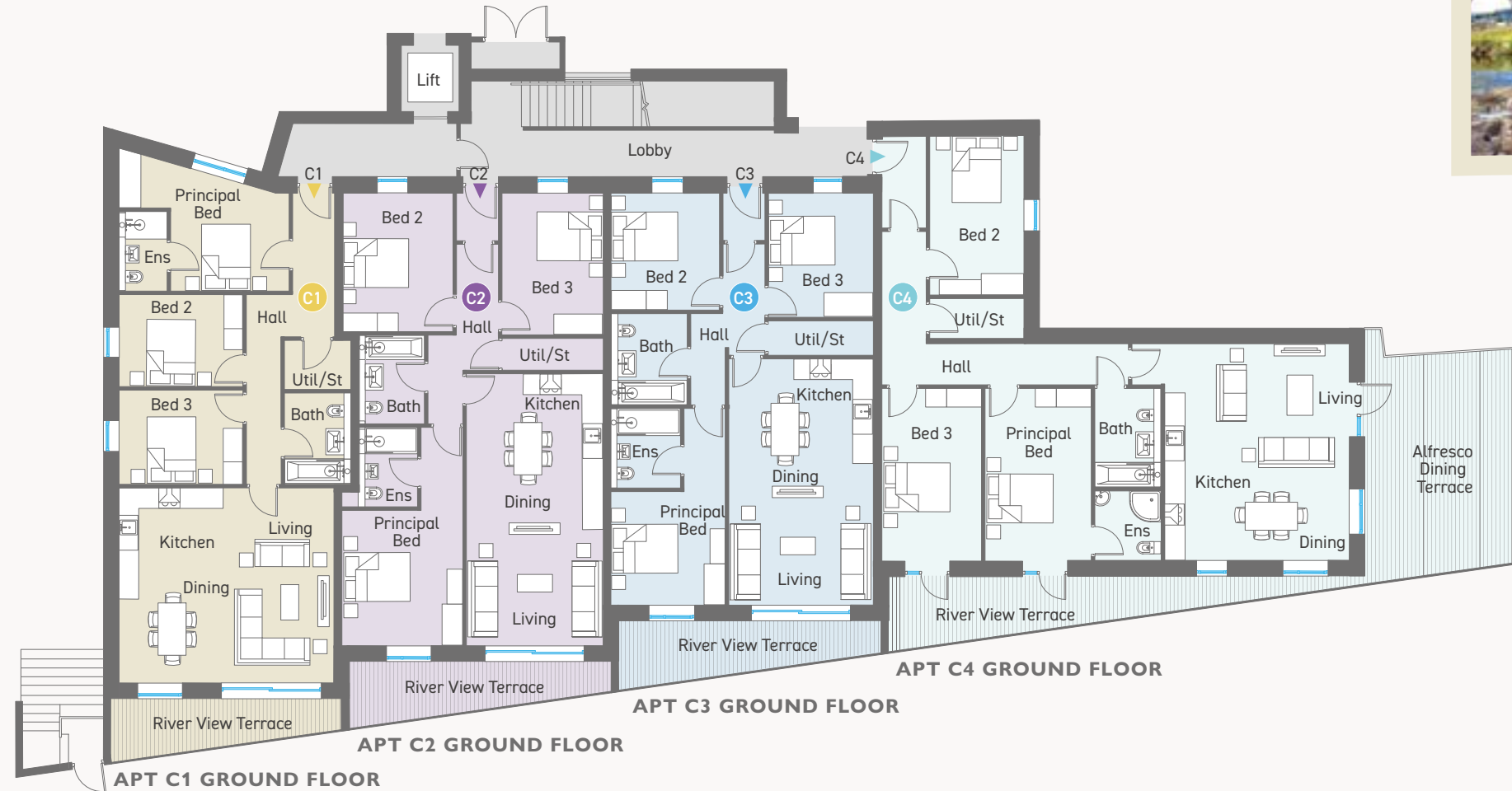
BLOCK C - GROUND FLOOR APARTMENTS

APARTMENT C1 | 3 BEDROOM: 980 sq ft

APARTMENT C2 | 3 BEDROOM: 1022 sq ft

APARTMENT C3 | 3 BEDROOM: 960 sq ft

APARTMENT C4 | 3 BEDROOM: 1158 sq ft



GROUND FLOOR | Apt C1

	Ft	metres
Entrance Hall with Utility Store		
Kitchen Dine Living	20'2" x 18'4"	6.15 x 5.59
Principal Bedroom	11'1" x 9'2"	3.38 x 2.80
Ensuite	7'6" x 4'6"	2.28 x 1.38
Bedroom 2	11'7" x 8'9"	3.54 x 2.65
Bedroom 3	11'7" x 8'10"	3.54 x 2.70
Bathroom	8'8" x 6'2"	2.62 x 1.88
River View Terrace		

GROUND FLOOR | Apt C2

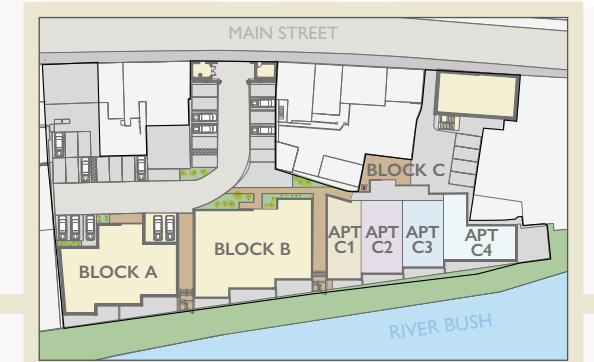
	Ft	metres
Entrance Hall with Utility Store		
Kitchen Dine Living	25'6" x 12'9"	7.79 x 3.90
Principal Bedroom	12'9" x 11'4"	3.87 x 3.45
Ensuite	7'6" x 5'6"	2.28 x 1.68
Bedroom 2	13'1" x 10'4"	3.99 x 3.16
Bedroom 3	13'3" x 9'6"	4.04 x 2.89
Bathroom	8'4" x 6'2"	2.53 x 1.88
River View Terrace		

GROUND FLOOR | Apt C3

	Ft	metres
Entrance Hall with Utility Store		
Kitchen Dine Living	23'2" x 13'6"	7.07 x 4.11
Principal Bedroom	10'8" x 10'8"	3.27 x 3.27
Ensuite	7'6" x 6'6"	2.28 x 1.97
Bedroom 2	11'0" x 10'2"	3.34 x 3.09
Bedroom 3	11'7" x 9'9"	3.54 x 2.99
Bathroom	8'7" x 7'2"	2.62 x 2.17
River View Terrace		

GROUND FLOOR | Apt C4

	Ft	metres
Entrance Hall with Utility Store		
Kitchen Dine Living	20'6" x 20'6"	6.24 x 6.21
Principal Bedroom	16'3" x 10'0"	4.94 x 3.04
Ensuite	6'7" x 6'3"	2.00 x 1.90
Bedroom 2	18'9" x 9'1"	5.74 x 2.77
Bedroom 3	16'3" x 9'4"	4.94 x 2.86
Bathroom	9'3" x 6'2"	2.83 x 1.90
Alfresco Dining Terrace		
River View Terrace		



BLOCK C - FIRST FLOOR APARTMENTS

APARTMENT C5 | 3 BEDROOM: 915 sq ft

APARTMENT C6 | 3 BEDROOM: 936 sq ft

APARTMENT C7 | 2 BEDROOM: 861 sq ft

APARTMENT C8 | 3 BEDROOM: 1141 sq ft



FIRST FLOOR | Apt C5

	Ft	metres
Entrance Hall with Utility Store		
Kitchen Dine Living	20'2" x 18'4"	6.15 x 5.59
Principal Bedroom	11'1" x 9'2"	3.38 x 2.80
Ensuite	7'6" x 4'6"	2.28 x 1.38
Bedroom 2	11'7" x 8'9"	3.54 x 2.65
Bedroom 3	11'7" x 8'10"	3.54 x 2.70
Bathroom	8'8" x 6'2"	2.62 x 1.88
River View Terrace		

FIRST FLOOR | Apt C6

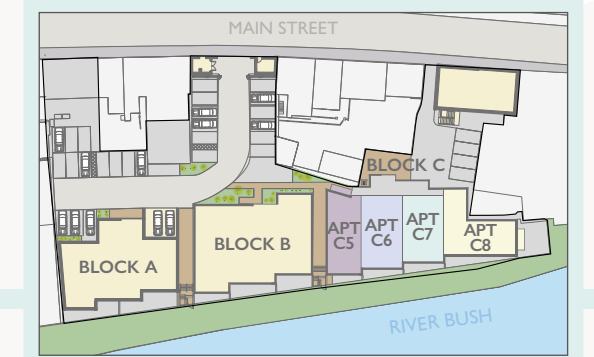
	Ft	metres
Entrance Hall with Utility Store		
Kitchen Dine Living	27'0" x 12'9"	8.22 x 3.90
Principal Bedroom	11'4" x 11'0"	3.45 x 3.34
Ensuite	6'3" x 6'2"	1.90 x 1.88
Bedroom 2	10'4" x 9'4"	3.16 x 2.86
Bedroom 3	11'8" x 9'6"	3.55 x 2.89
Bathroom	7'9" x 6'2"	2.38 x 1.88
River View Terrace		

FIRST FLOOR | Apt C7

	Ft	metres
Entrance Hall with Utility Store		
Kitchen Dine Living	32'2" x 13'5"	9.82 x 4.11
Principal Bedroom	12'7" x 10'7"	3.88 x 3.27
Ensuite	6'6" x 6'3"	1.97 x 1.90
Bedroom 2	11'0" x 10'2"	3.34 x 3.09
Bathroom	9'9" x 6'3"	2.99 x 1.90
River View Terrace		

FIRST FLOOR | Apt C8

	Ft	metres
Entrance Hall with Utility Store		
Kitchen Dine Living	20'6" x 17'4"	6.24 x 5.28
Principal Bedroom	15'5" x 10'0"	4.70 x 3.04
Ensuite	6'7" x 6'3"	2.00 x 1.90
Bedroom 2	14'9" x 8'9"	4.54 x 2.68
Bedroom 3	15'5" x 9'4"	4.70 x 2.86
Bathroom	9'3" x 6'2"	2.83 x 1.90
Balcony		



BLOCK C - FIRST FLOOR PLANS APARTMENTS C5, C6, C7 & C8

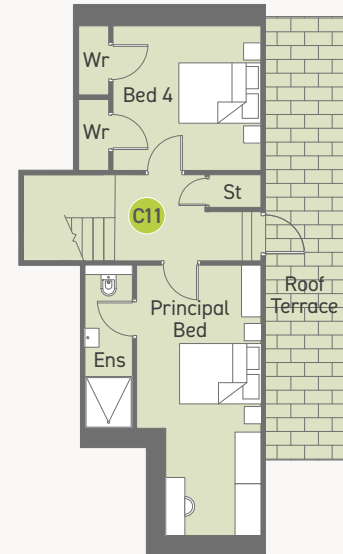
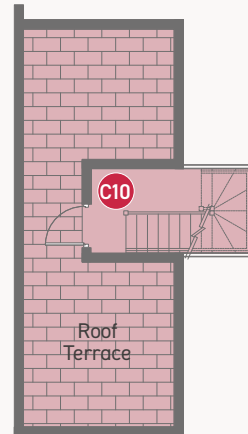
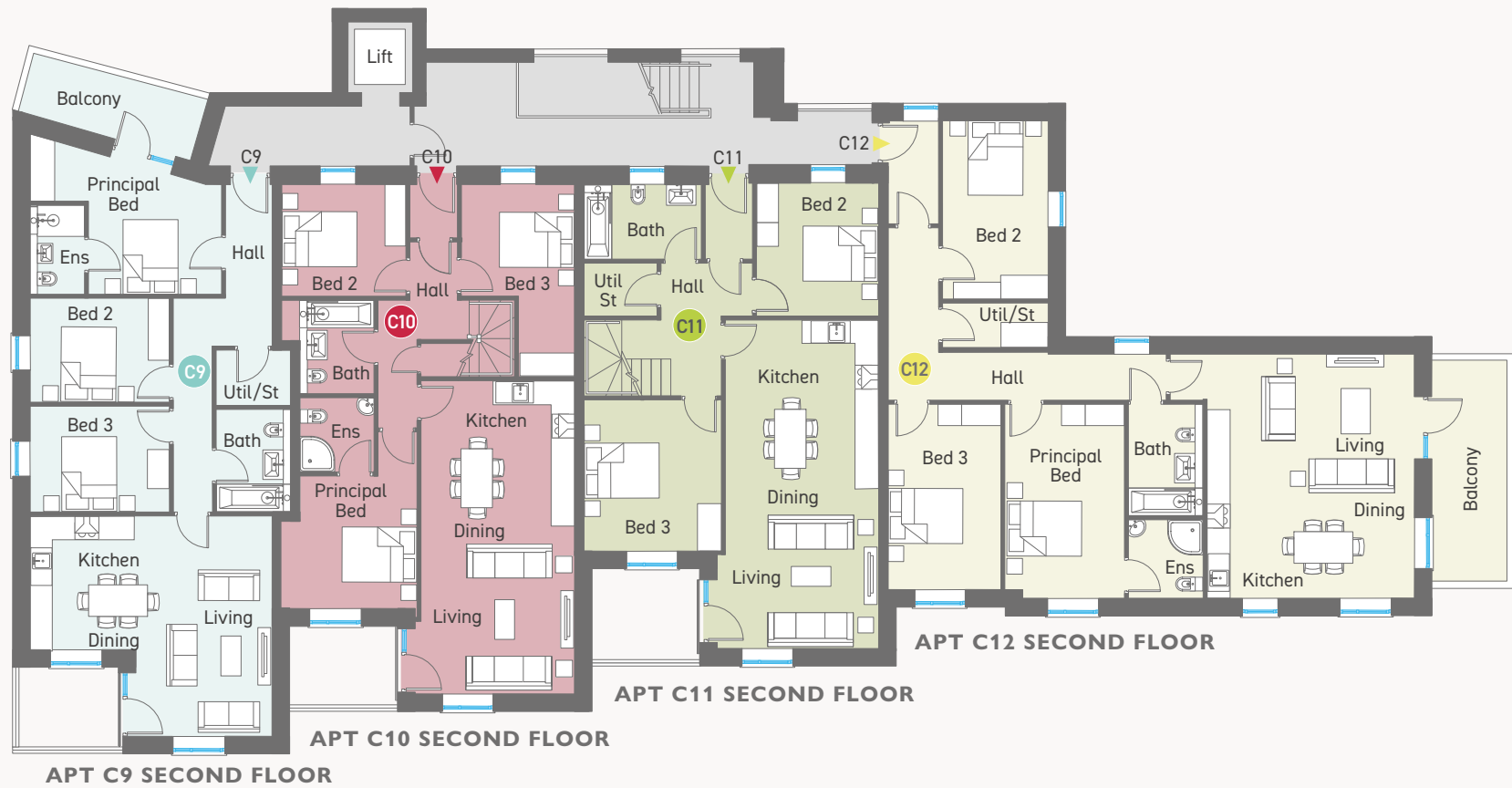
BLOCK C - SECOND & THIRD FLOOR APARTMENTS

APARTMENT C9 | 3 BEDROOM: 915 sq ft

APARTMENT C10 | 3 BEDROOM: 936 sq ft

APARTMENT C11 | 4 BEDROOM: 1345 sq ft

APARTMENT C12 | 3 BEDROOM: 1141 sq ft



SECOND FLOOR | Apt C9

	Ft	metres
Entrance Hall with Utility Store		
Kitchen Dine Living	20'2" x 18'4"	6.15 x 5.59
Principal Bedroom	11'1" x 9'2"	3.38 x 2.80
Ensuite	7'6" x 4'6"	2.28 x 1.38
Bedroom 2	11'7" x 8'9"	3.54 x 2.65
Bedroom 3	11'7" x 8'10"	3.54 x 2.70
Bathroom	8'8" x 6'2"	2.62 x 1.88
Balcony		

SECOND FLOOR | Apt C11

	Ft	metres
Entrance Hall with Utility Store		
Kitchen Dine Liv max	27'7" x 13'6"	8.40 x 4.14
Bedroom 2	10'1" x 10'3"	3.38 x 3.12
Bedroom 3	12'6" x 11'4"	3.81 x 3.47
Bathroom	9'10" x 6'4"	2.99 x 1.93

THIRD FLOOR | Apt C11

	Ft	metres
Principal Bedroom	20'7" x 9'9"	6.27 x 3.00
Ensuite	12'4" x 3'8"	3.78 x 1.10
Bedroom 4	11'3" x 11'0"	3.43 x 3.35
Roof Terrace		

SECOND FLOOR | Apt C10

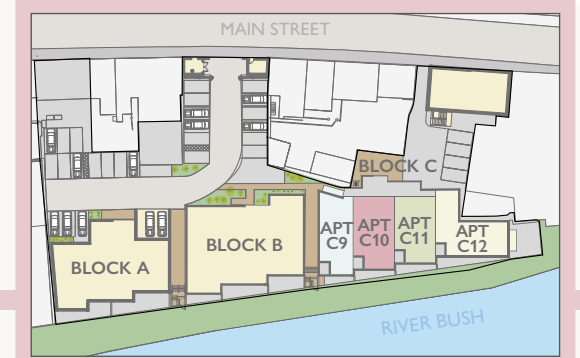
	Ft	metres
Entrance Hall with Utility Store		
Kitchen Dine Living	26'2" x 12'9"	7.96 x 3.90
Principal Bedroom	11'4" x 11'0"	3.45 x 3.34
Ensuite	6'3" x 6'2"	1.90 x 1.88
Bedroom 2	10'4" x 9'4"	3.16 x 2.86
Bedroom 3 max	16'2" x 9'6"	4.91 x 2.89
Bathroom	7'9" x 6'2"	2.38 x 1.88

THIRD FLOOR | Apt C10

Roof Terrace		
--------------	--	--

SECOND FLOOR | Apt C12

	Ft	metres
Entrance Hall with Utility Store		
Kitchen Dine Living	20'6" x 17'4"	6.24 x 5.28
Principal Bedroom	15'5" x 10'0"	4.70 x 3.04
Ensuite	6'7" x 6'3"	2.00 x 1.90
Bedroom 2	14'9" x 8'9"	4.54 x 2.68
Bedroom 3	15'5" x 9'4"	4.70 x 2.86
Bathroom	9'3" x 6'2"	2.83 x 1.90
Balcony		



A SENSE of style, UNPARALLELED COMFORT, LUXURY & ELEGANCE come as standard

KITCHEN

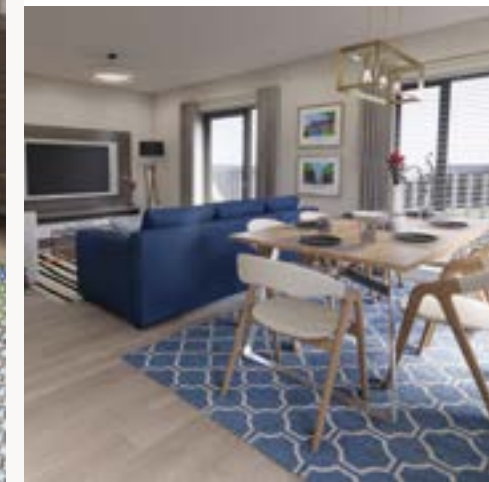
- Sleek, uncluttered, contemporary kitchens from Exorna in a choice of colours and finishes
- Carella worktops and upstands in a choice of colours and profiles
- Integrated appliances to include hob, oven, fridge/freezer, dishwasher, extractor and washer / drier
- Low voltage LED downlights to ceiling

BATHROOM & ENSUITE

- Choice of contemporary white sanitary ware with chrome fittings - from our nominated supplier
- Raindrench shower in bathroom / ensuite
- Low profile shower tray
- Wall hung WC with concealed cistern
- Chrome heated towel rail
- Fully tiled shower enclosure
- Tiled splash back at wash hand basin

DECORATION

- Painted internal walls and ceilings in white emulsion
- Contemporary internal doors with quality ironmongery
- Painted skirting boards and architraves





FLOOR COVERINGS

- Choice of tiled or wooden laminate floor to entrance hall, kitchen, living and dining areas - from our nominated supplier
- Choice of quality carpet and underlay to bedrooms - from our nominated supplier
- Tiled floor to bathroom and ensuite

ELECTRICAL SPECIFICATION

- Comprehensive range of electrical sockets, switches, TV and telephone points
- Video camera security entry system
- Mains supply heat, smoke and carbon monoxide detectors with battery back-up
- Wiring provision for Wifi connection
- USB charging point to bedrooms and living area

EXTERNAL FEATURES

- Gated access with intercom entry system
- Excellent soundproofing and insulation between floors
- Feature aluminium glazing to maximise the river aspect
- Balcony or terrace to most apartments

COMMUNAL AREAS

- High specification flooring and décor to entrance lobbies and stairwell
- Lift in all apartment blocks
- Secure private courtyard car parking within gated residents communal area
- Feature intelligent lighting to entrance lobby and staircases

MANAGEMENT COMPANY

A management company will be formed to look after the upkeep and wellbeing of all common and communal areas

WARRANTY

10 Year Global Home Warranty



SELLING AGENT



PORTSTEWART
028 7083 5444

portstewart@philiptweedie.com
www.philiptweedie.com

These particulars do not constitute any part of an offer or contract. None of the statements contained in these particulars are to be relied on as statements or representations of fact and intending purchasers must satisfy themselves by inspection or otherwise as to the correctness of each of the statements contained in these particulars. All measurements of area are quoted as Net Sales Area which is calculated in accordance with the RICS Code of Measuring Practice (6th Edition) APP21. Configures of kitchens, bathrooms and wardrobes may be subject to alteration from those illustrated without prior notification. Purchasers should satisfy themselves as to the current specification at the time of booking.

The Vendor does not make or give, and neither the Selling Agent, nor any person in their employment, has any authority to make or give any representation or warranty whatever in relation to any property. Artist's impressions and internal photographs are for illustration only. Plans are not to scale and all dimensions shown are approximate E. & O. E.

B L O C K
creative property marketing