

10 The Flax House The Mill Village Comber, BT23 5WT

Per Month £1,350 Per Month



**VICTORIA
PINKERTON**

victoriapinkerton.co.uk

We are delighted to bring to the rental market this beautifully presented two-bedroom apartment located within the highly sought-after Mill Village development.

Offering bright and spacious accommodation throughout, the property comprises a modern open-plan living and dining area, fitted kitchen, and two

well-proportioned double bedrooms, both benefiting from their own ensuite. The apartment also features a private balcony, providing an ideal space to relax and enjoy the surroundings.

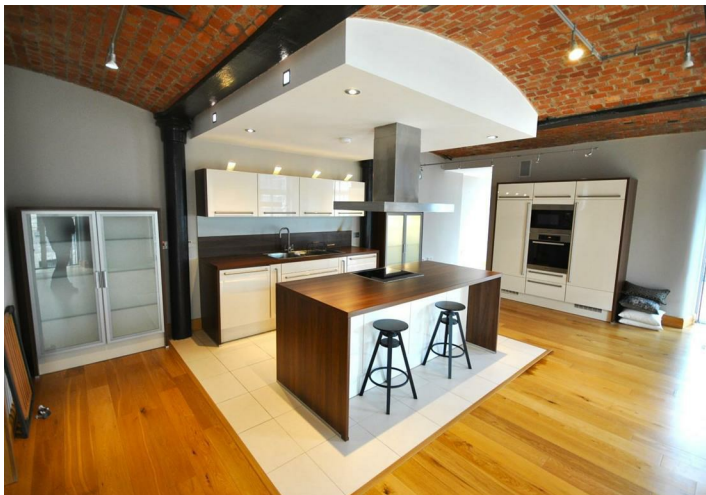
Residents of The Mill Village enjoy exclusive access to the on-site leisure facilities, including a swimming pool and gym, with membership included within

the tenancy.

Ideally situated close to local amenities, transport links, and picturesque walks, this superb apartment offers comfortable and convenient living in a desirable setting.

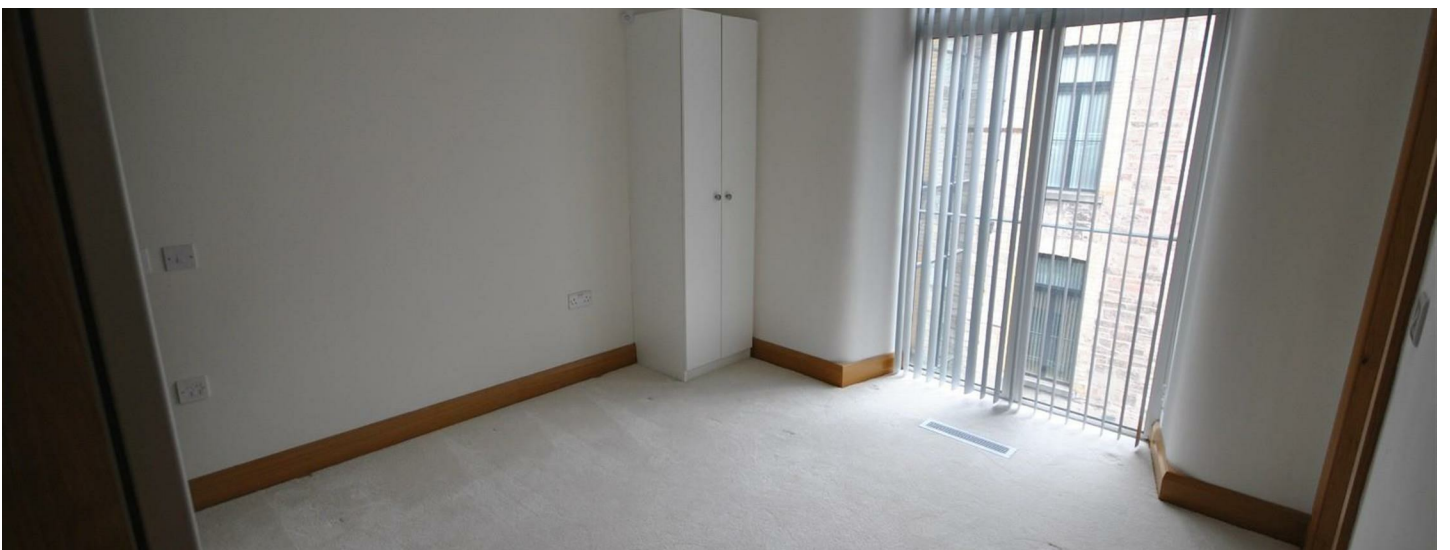
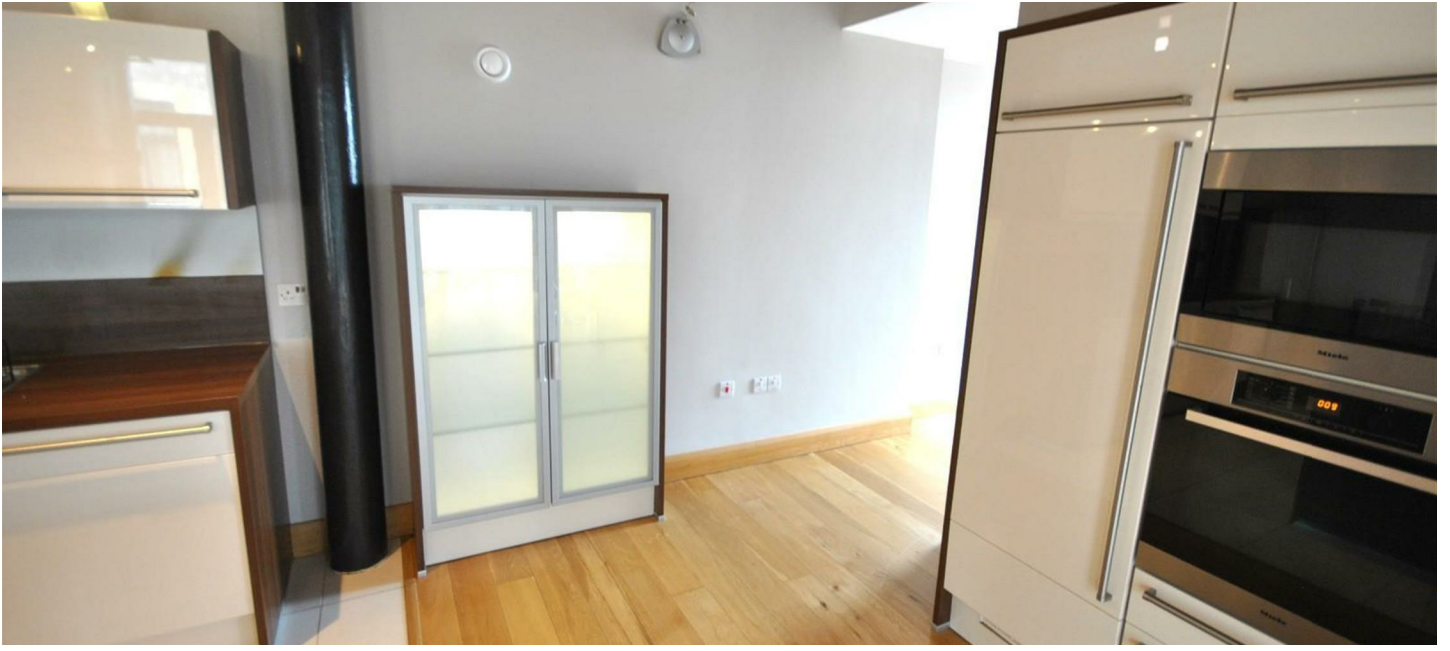
Early viewing is highly recommended, as interest is expected to be high.





PROPERTY FEATURES

- 2 Bedroom Apartment
- Large Open Plan Living, Dining & Kitchen Area
- Gas Heating
- Partially Furnished
- Allocated parking
- Access to Swimming Pool & Gym








PROPERTY MEASUREMENTS

Energy Efficiency Rating

The rating for this property is:

| Energy Efficiency Rating | | |
|---|---------|---|
| | Current | Potential |
| Very energy efficient - lower running costs | | |
| (92 plus) A | | |
| (81-91) B | | |
| (69-80) C | | |
| (55-68) D | | |
| (39-54) E | | |
| (21-38) F | | |
| (1-20) G | | |
| Not energy efficient - higher running costs | | |
| Northern Ireland | | EU Directive 2002/91/EC  |

* For your information: The UK average rating is 'E50'.

 **WHAT3WORDS:** word.word.word

Bangor & Donaghadee
125 Main Street, Bangor BT20 4AE
028 9147 9393

Ballyholme
88a Groomsport Road, Bangor BT20 5NF
028 9147 9444

Comber & Ards
7a The Square, Comber BT23 5DX
028 9140 4100


VICTORIA PINKERTON

victoriapinkerton.co.uk

naea | **propertymark**
PROTECTED

arla | **propertymark**
PROTECTED

naea | **propertymark**
COMMERCIAL

These details are not part of any offer or contract. Statements in this document should not be considered factual; buyers must verify information through inspection or other means. Neither the vendor, Victoria Pinkerton, nor employees of Victoria Pinkerton are authorised to provide any representation or warranty regarding this property. Room measurements are approximate.