

262 Donegall Avenue
, BT12 6LU

PCM £700 PCM



VICTORIA 
PINKERTON

victoriapinkerton.co.uk

Situated just off Tates Ave this 2 bedroom Unfurnished Mid Terrace property benefits from Gas Central Heating, uPVC windows and is a recently fitted modern kitchen.

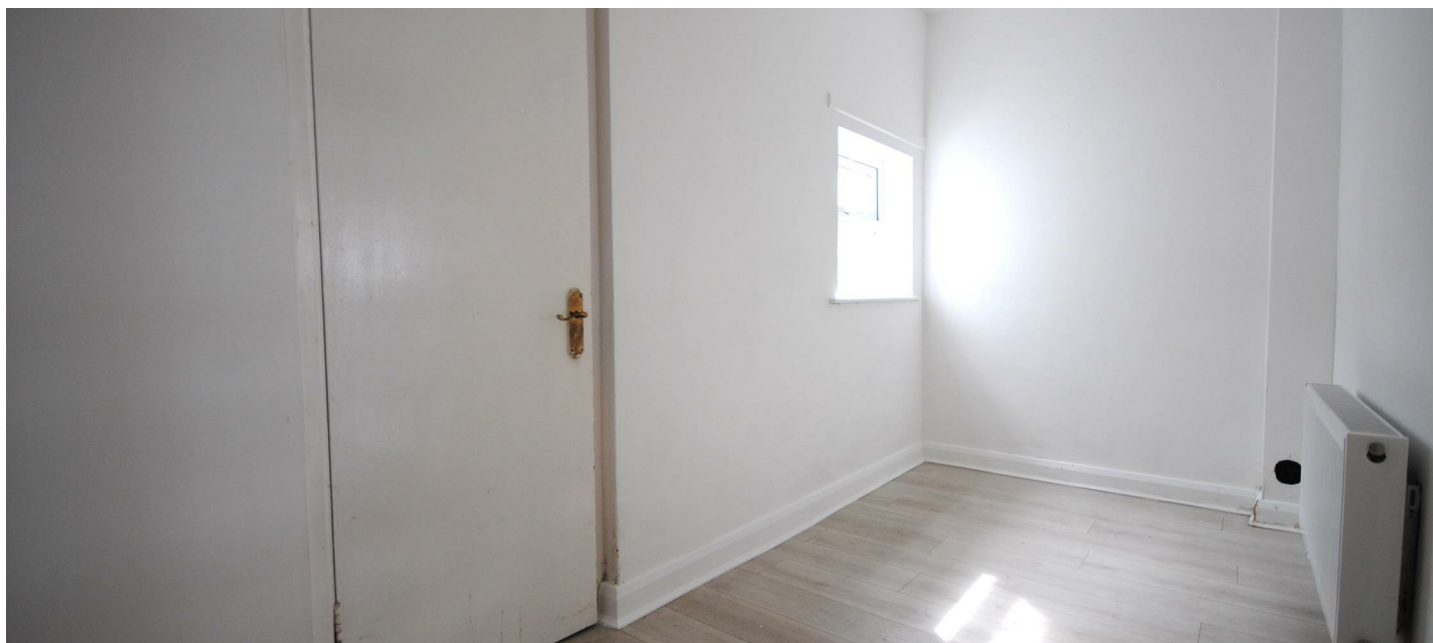
The property is very convenient to the varied range of local amenities, shops, restaurants and leisure facilities that

the Lisburn Road has to offer.

The location also provides ease of access to the M1 Motorway for commuting.

Belfast City Centre, Queen's University and Boucher Road are all just a short distance away.





PROPERTY FEATURES

- Recently Renovated Mid Terrace Located Off Donegall Road
- Upstairs Bathroom With Three Piece Suite
- Enclosed Rear Yard With Access To Common Passage
- Newly Modern Fitted Kitchen With Built In Oven And Hob
- Two First Floor Bedrooms
- Close Proximity To Belfast City And Royal Hospitals
- GAs Central Heating/ uPVC Glazing
- Spacious Lounge Through To Dining Room
- Available to Let Immediately For £700 Per Month Including Rates



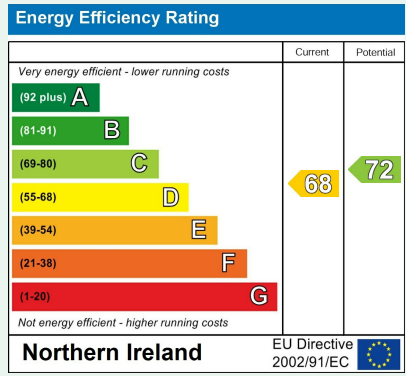
2  1  1 

House - Mid Terrace 

PROPERTY MEASUREMENTS

Energy Efficiency Rating

The rating for this property is:



* For your information: The UK average rating is 'E50'.

 WHAT3WORDS: word.word.word

VICTORIA PINKERTON

victoriapinkerton.co.uk

Bangor & Donaghadee
125 Main Street, Bangor BT20 4AE
028 9147 9393

Ballyholme
88a Groomspoint Road, Bangor BT20 5NF
028 9147 9444

Comber & Ards
7a The Square, Comber BT23 5DX
028 9140 4100



These details are not part of any offer or contract. Statements in this document should not be considered factual; buyers must verify information through inspection or other means. Neither the vendor, Victoria Pinkerton, nor employees of Victoria Pinkerton are authorised to provide any representation or warranty regarding this property. Room measurements are approximate.