

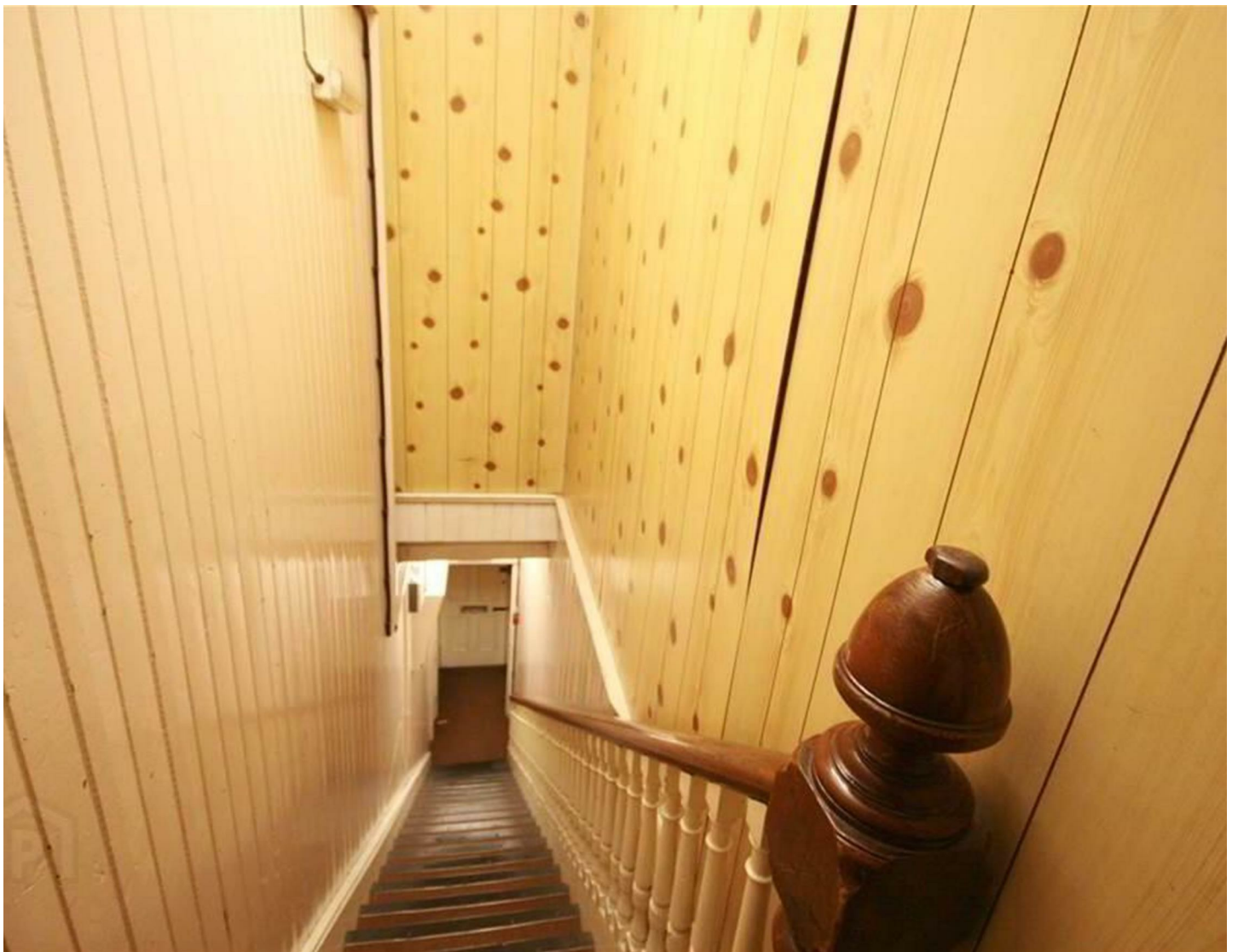
65b Main Street
Bangor, BT20 5AF
Per month £750 Per month



**VICTORIA
PINKERTON**

victoriapinkerton.co.uk

Spacious town centre first floor office suite, available to let immediately, of approximately 720 square feet. Long term lease available.





PROPERTY FEATURES

- First Floor Office Suite In Town Centre Location
- Available To Let Immediately
- Long Term Lease Available/Flexible Lease Terms
- Total Floor Area Approx 720 sq ft (66.89 sq m)



PROPERTY MEASUREMENTS

Staircase

From communal ground floor porch

Spacious Landing Area

With Toilet low flush WC and wash hand basin

Front Office 1 16'6" x 11'10"

Front Office 2 11'7" x 11'6"

Rear General Office / Reception Area
23'0" x 13'6"

Rear Office 3 11'0" x 9'9"

Small Kitchen Area Off 7'0" x 3'0"
Stainless steel sink unit, hot water geyser

Toilet

With low flush wc and wash hand basin

Storage Area 11'10" x 4'4"

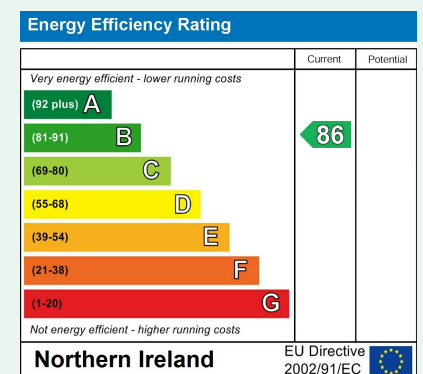
Total floor area Approx. 720 sq ft
(66.89 sq m)

Directions

Main Street, Bangor

Energy Efficiency Rating

The rating for this property is:



* For your information: The UK average rating is 'E50'.



WHAT3WORDS: word.word.word

Bangor & Donaghadee
125 Main Street, Bangor BT20 4AE
028 9147 9393

Ballyholme
88a Groomsport Road, Bangor BT20 5NF
028 9147 9444

Comber & Ards
7a The Square, Comber BT23 5DX
028 9140 4100

VICTORIA PINKERTON

victoriapinkerton.co.uk



These details are not part of any offer or contract. Statements in this document should not be considered factual; buyers must verify information through inspection or other means. Neither the vendor, Victoria Pinkerton, nor employees of Victoria Pinkerton are authorised to provide any representation or warranty regarding this property. Room measurements are approximate.