

14 Roseville Apartments Bangor, BT19 1DZ

Offers over £135,000



VICTORIA
PINKERTON



victoriapinkerton.co.uk

Peaceful Apartment For Over 55s Living In Bangor

Welcome to Roseville Apartments, a delightful two-bedroom apartment located in Bangor. This purpose-built complex is exclusively designed for those aged 55 and over, ensuring a peaceful and friendly environment for its residents.

As you enter the apartment, you will be greeted by a spacious and bright open living room, perfect for relaxation or entertaining guests. The well-maintained interior is complemented by uPVC double-glazed windows, allowing natural light to flood the space while providing excellent

insulation.

The apartment features two comfortable bedrooms, ideal for accommodating guests or creating a personal sanctuary. The well-appointed bathroom is designed for convenience and ease of use.

Residents of Roseville Apartments can enjoy the added benefit of a communal lounge area, providing a wonderful space to meet with friends and engage in social activities. The complex is

equipped with Economy 7 heating and hot water, ensuring a warm and inviting atmosphere throughout the year. For peace of mind, the property also includes a twenty-four-hour monitored emergency pull cord system, offering an extra layer of security and support.

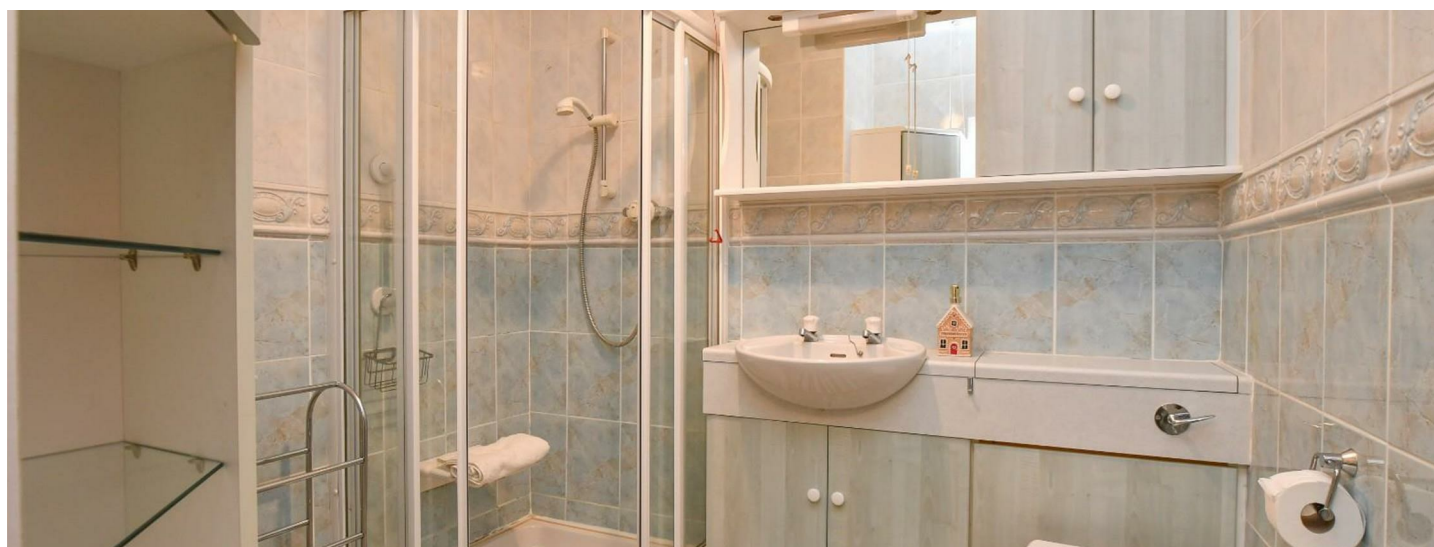
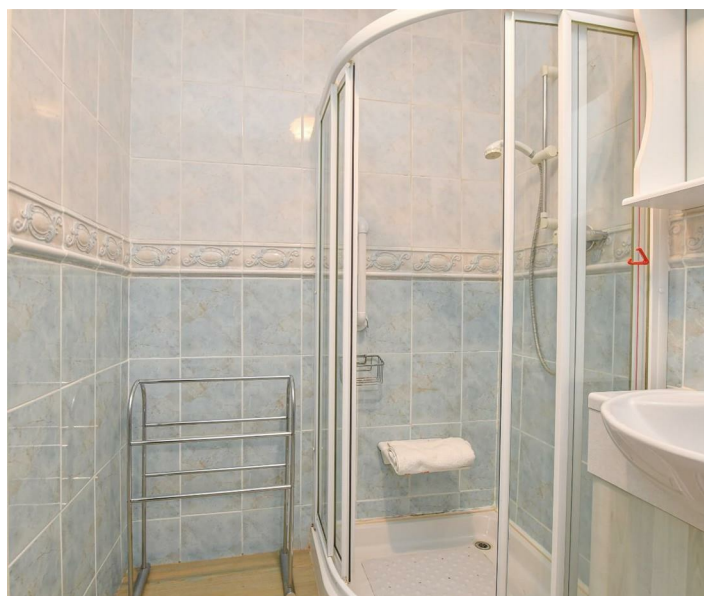
This apartment is not just a home; it is a community where you can enjoy a fulfilling lifestyle in a safe and welcoming environment. If you are seeking a comfortable and well-equipped living space in Bangor, Roseville Apartments is the perfect choice for you.

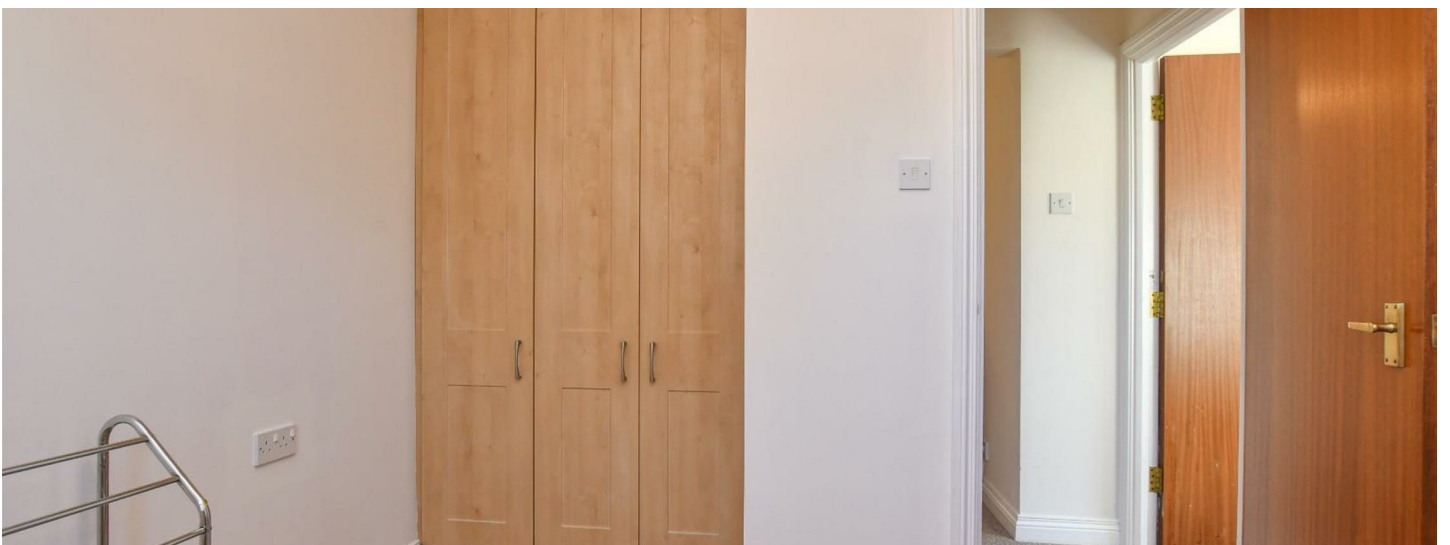




PROPERTY FEATURES

- Welcome To Roseville Apartments, A Purpose-Built Two-Bedroom Home In Bangor
- Exclusively Designed For Residents Aged 55 And Over
- Peaceful, Friendly, And Supportive Community Environment
- Bright And Spacious Open-Plan Living Room Ideal For Relaxing Or Entertaining
- Well-Maintained Interior With uPVC Double-Glazed Windows
- Two Comfortable Bedrooms Offering Flexibility And Privacy
- Practical And Well-Appointed Bathroom Designed For Ease Of Use
- Communal Lounge Area For Socialising And Community Activities
- Economy 7 Heating And Hot Water For Year-Round Comfort
- Twenty-Four-Hour Monitored Emergency Pull Cord System For Added Security







WHAT3WORDS: ///intelligible.paid.resist

**VICTORIA
PINKERTON**

victoriapinkerton.co.uk

Bangor & Donaghadee
125 Main Street, Bangor BT20 4AE
028 9147 9393

Ballyholme
88a Groomsport Road, Bangor BT20 5NF
028 9147 9444

Comber & Ards
7a The Square, Comber BT23 5DX
028 9140 4100

PROPERTY MEASUREMENTS

Hallway	13'11 x 4'9
Storage	2' x 2'6
Storage	5'5 x 4'3
Bathroom	7'9 x 7'9
Kitchen	11'9 x 7'10
Living Room	15' x 10'7
Bedroom 1	10'4 x 11'5
Bedroom 2	9'1 x 11'3

REQUIRED INFO UNDER TRADING STANDARDS GUIDANCE

Tenure - Understood to be Leasehold
Ground Rent - Understood to be £40
per annum

Service Charge - Understood to be
£175 per month

Rates - Understood to be £929.96 per
annum

Directions

Located off Wandsworth Road.

Energy Efficiency Rating

The rating for this property is:

Energy Efficiency Rating		
	Current	Potential
Very energy efficient - lower running costs		
(92 plus) A		
(81-91) B		
(69-80) C		
(55-68) D		
(39-54) E		
(21-38) F		
(1-20) G		
Not energy efficient - higher running costs		
Northern Ireland		EU Directive 2002/91/EC

* For your information: The UK average rating is 'E50'.



These details are not part of any offer or contract. Statements in this document should not be considered factual; buyers must verify information through inspection or other means. Neither the vendor, Victoria Pinkerton, nor employees of Victoria Pinkerton are authorised to provide any representation or warranty regarding this property. Room measurements are approximate.