

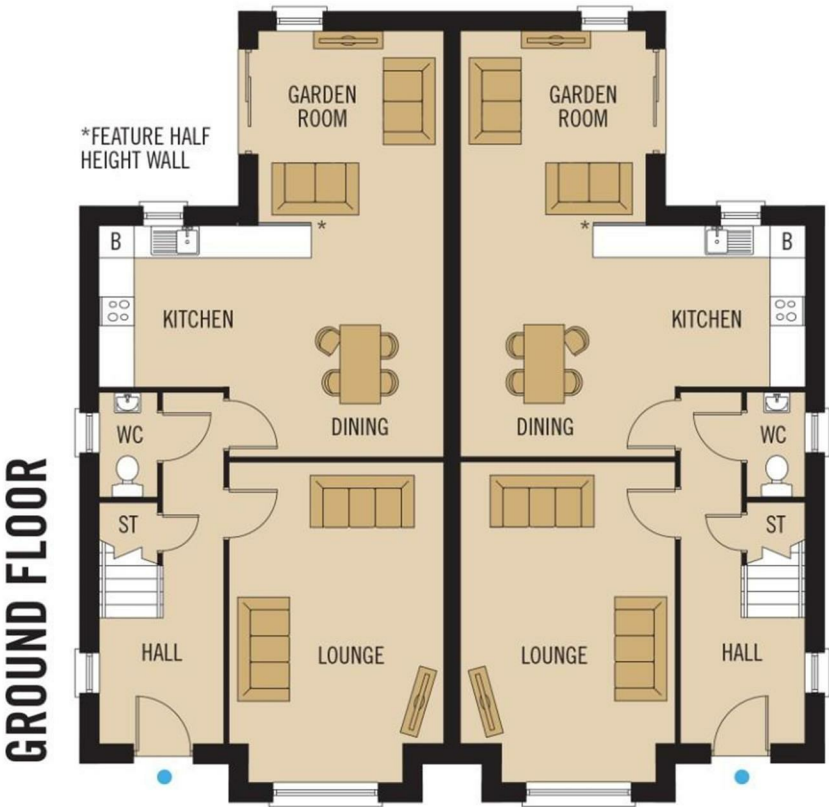
# Massereene A17.1a 212 Enlerbank, Little Enler Road

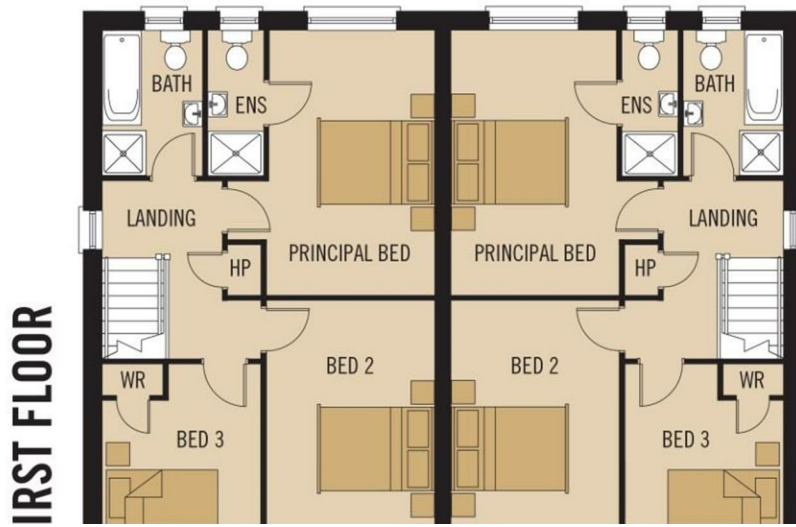
*Asking price £262,950*



**VICTORIA  
PINKERTON**

[victoriapinkerton.co.uk](http://victoriapinkerton.co.uk)





## PROPERTY FEATURES







WHAT3WORDS: word.word.word

VICTORIA  
PINKERTON

victoriapinkerton.co.uk

**Bangor & Donaghadee**  
125 Main Street, Bangor BT20 4AE  
028 9147 9393

**Comber & Ards**  
7a The Square, Comber BT23 5DX  
028 9140 4100

# PROPERTY MEASUREMENTS

## Energy Efficiency Rating

The rating for this property is:

Energy Efficiency Rating		
	Current	Potential
Very energy efficient - lower running costs		
(92 plus) A		
(81-91) B		
(69-80) C		
(55-68) D		
(39-54) E		
(21-38) F		
(1-20) G		
Not energy efficient - higher running costs		
England & Wales		EU Directive 2002/91/EC

\* For your information: The UK average rating is 'E50'.



These details are not part of any offer or contract. Statements in this document should not be considered factual; buyers must verify information through inspection or other means. Neither the vendor, Victoria Pinkerton, nor employees of Victoria Pinkerton are authorised to provide any representation or warranty regarding this property. Room measurements are approximate.