

Apt 15 Ballyholme View Bangor, BT20 5HT

Per month £1,400 Per month



VICTORIA
PINKERTON

victoriapinkerton.co.uk

A stunning duplex apartment with outstanding sea views.

Situated on the scenic Seacliff Road, this property offers luxury accommodation and views over Belfast Lough. The property features three well proportioned bedrooms, with the master situated on the upper

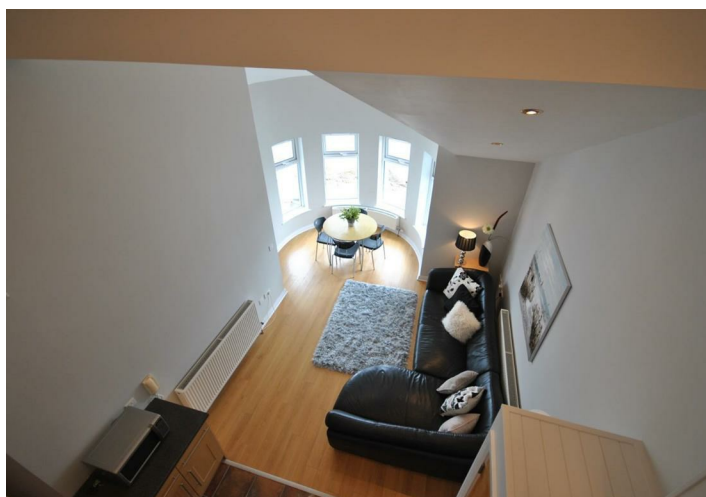
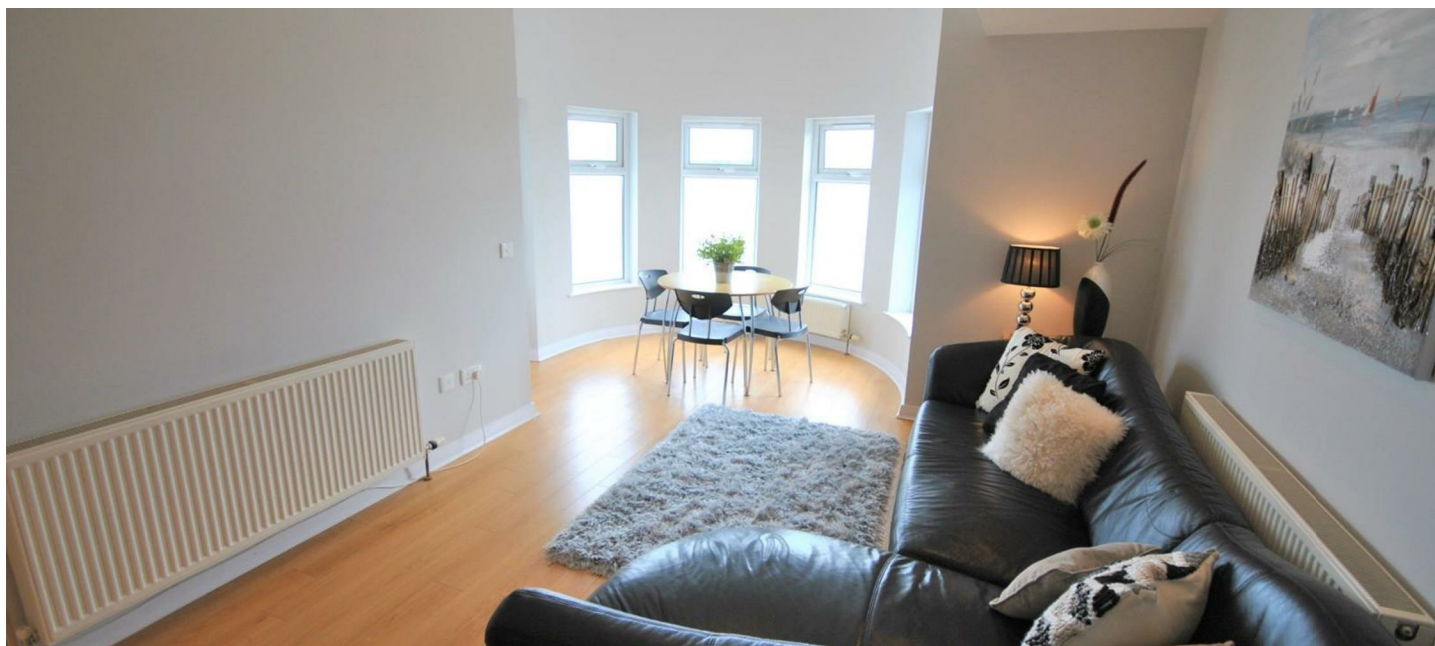
mezzanine level of the apartment and comes with a balcony overlooking the main living area. The lower level features a modern kitchen, dining and lounge space. The open-plan living space and balcony area fully utilise the panoramic views on offer. The property also benefits from a gas-fired central heating system.

The property is situated in an extremely well maintained apartment block, with lift and underground car parking space available.

The Rates on the property are paid directly by the tenant to LPS.

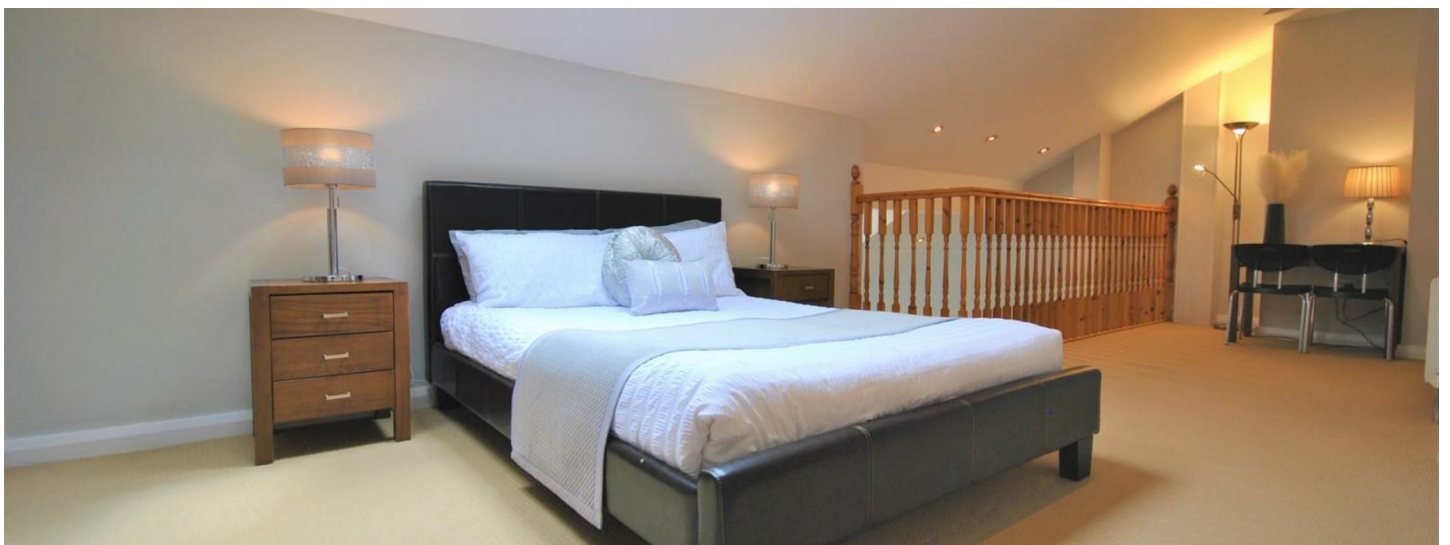
The amount of £1400 is made up of £1250 rent and £150 rates.





PROPERTY FEATURES

- Luxury Three-Bedroom Penthouse Apartment
- Kitchen With Appliances
- Secure Allocated Covered Parking
- Rates Included In Advertised Rent But Paid By Tenant
- EPC - C73/C77
- Contemporary Bathroom
- Close To Amenities
- Open Plan Living/Kitchen/Dining
- Lift Access To all floors
- Adjacent To Beach And Yacht Clubs







WHAT3WORDS: word.word.word

**VICTORIA
PINKERTON**

victoriapinkerton.co.uk

Bangor & Donaghadee
125 Main Street, Bangor BT20 4AE
028 9147 9393

Ballyholme
88a Groomsport Road, Bangor BT20 5NF
028 9147 9444

Comber & Ards
7a The Square, Comber BT23 5DX
028 9140 4100

PROPERTY MEASUREMENTS

Energy Efficiency Rating

The rating for this property is:

Energy Efficiency Rating		
	Current	Potential
Very energy efficient - lower running costs		
(92 plus) A		
(81-91) B		
(69-80) C	73	77
(55-68) D		
(39-54) E		
(21-38) F		
(1-20) G		
Not energy efficient - higher running costs		
Northern Ireland		EU Directive 2002/91/EC

* For your information: The UK average rating is 'E50'.



These details are not part of any offer or contract. Statements in this document should not be considered factual; buyers must verify information through inspection or other means. Neither the vendor, Victoria Pinkerton, nor employees of Victoria Pinkerton are authorised to provide any representation or warranty regarding this property. Room measurements are approximate.