

17 BLEACH GREEN COURT

**Whiteabbey
Newtownabbey BT37**

- Semi Detached Villa
- 3 Bedrooms
- Lounge
- Fitted Kitchen / Diner
- Modern White Bathroom Suite
- Pvc Double Glazing
- Oil Heating
- Driveway & Gardens

Energy Efficiency Rating		Current	Potential
Very energy efficient - lower running costs			
(92 plus)	A		
(81-91)	B		
(69-80)	C		
(55-68)	D		
(39-54)	E		
(21-38)	F		
(1-20)	G		
Not energy efficient - higher running costs			
Northern Ireland		EU Directive 2002/91/EC	

Offers Around £164,950

17 Bleach Green Court

Whiteabbey, Newtownabbey, BT37 0DZ



ACCOMMODATION COMPRISES; fan. Plumbed for washing machine, fridge / freezer space, partly tiled walls, tiled floor, radiator, pvc double glazed double doors to rear.

GROUND FLOOR

ENTRANCE HALL

Pvc double glazed front door, wood laminate flooring, radiator, under stairs storage.

LOUNGE

Feature fireplace with tiled inset and matching hearth, radiator.

KITCHEN / DINER

Range of high and low level fitted units with Formica worktops, stainless steel single drainer sink unit, built in stainless steel under oven, ceramic hob and extractor

FIRST FLOOR

LANDING

Access to roofspace.

BEDROOM 1

Radiator.

BEDROOM 2

Radiator.

BEDROOM 3

Built in robe, radiator.

BATHROOM

Modern white suite comprising: panelled bath with electric shower and screen, pedestal wash hand basin and low flush W.C. Partly tiled walls, tiled floor, hotpress cupboard, chrome heated towel rail.

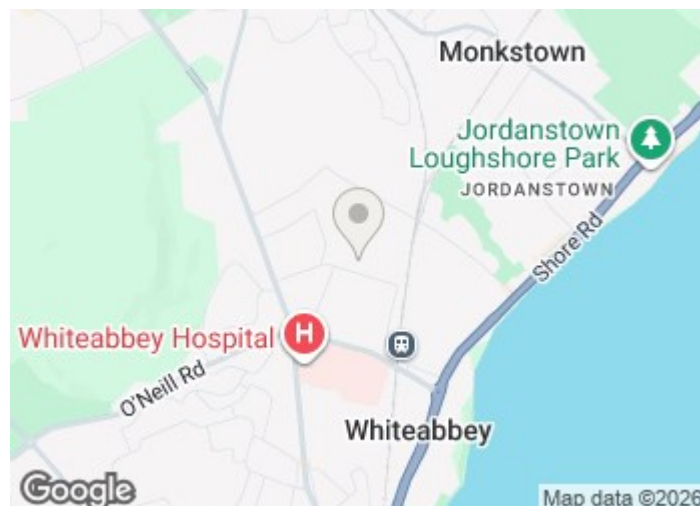
OUTSIDE

Pebbled driveway for off street parking.

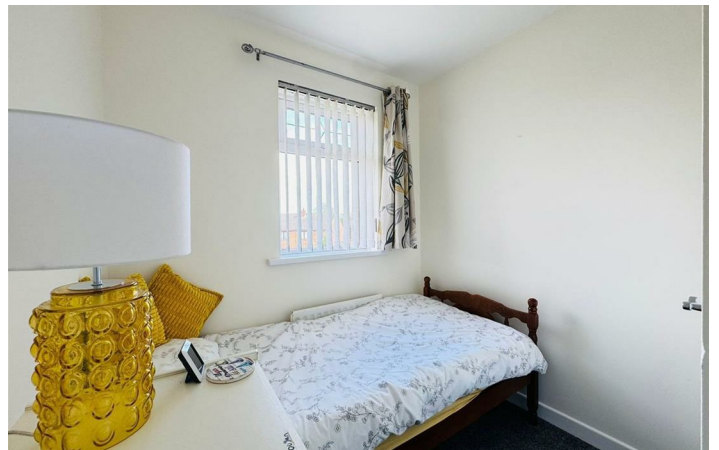
Garden to front in lawn.

Fully enclosed garden to rear in lawn with paved patio area.

Boiler house, pvc oil tank.

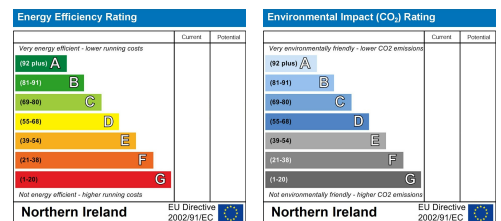


Directions



Floor Plan

These particulars, whilst believed to be accurate are set out as a general outline only for guidance and do not constitute any part of an offer or contract. Intending purchasers should not rely on them as statements of representation of fact, but must satisfy themselves by inspection or otherwise as to their accuracy. No person in this firm's employment has the authority to make or give any representation or warranty in respect of the property.



ULSTERPROPERTYSALES.CO.UK

ANDERSONSTOWN
028 9060 5200

BANGOR
028 9127 1185

DONAGHADEE
028 9188 8000

GLENGORMLEY
028 9083 3295

RENTAL DIVISION
028 9070 1000

BALLYHACKAMORE
028 9047 1515

CARRICKFERGUS
028 9336 6986

DOWNPATRICK
028 4461 4101

MALONE
028 9066 1929

BALLYNAHINCH
028 9756 1155

CAVEHILL
028 9072 9270

FORESTSIDE
028 9064 1264

NEWTOWNARDS
028 9181 1444



Keith Larmour trading under licence as Ulster Property Sales (Glengormley)
©Ulster Property Sales is a Registered Trademark