

HMK

PROPERTY

Hazeldene Avenue
Bangor, BT20 4RA

Asking price £285,000



Hazeldene Avenue, Bangor

HMK Property is delighted to introduce 14 Hazeldene Avenue, Ballyholme, to the sales market. This property has been extensively renovated in recent months, creating a modern family home in a highly sought-after area of North Down. On the ground floor, there is a bright, airy entrance hall with tiled flooring and bespoke wall panelling, leading to a large open-plan kitchen-diner/living space with a feature media wall, a large bay window, and laminate flooring. The kitchen, looking out towards the south-facing garden, has a range of integrated appliances and houses a new 'NAVIEN' gas boiler. The rear of the property is a beautifully decorated lounge/snug with panel walls, and double doors leading out to a small decking area overlooking the rear garden. Under the stairs is a newly fitted downstairs W/C. On the first floor, there are three excellent bedrooms, the master with a beautiful bay window overlooking the front of the property. Furthermore, there are two bathrooms, the family bathroom with LVT flooring, bath, low flush W/C, and vanity unit with sink inset, along with a separate shower room, with a corner shower, low flush W/C, and sink. Outside, No.14 has ample off-street parking for up to four cars, along with on-street parking. To the rear of the property is a bright, recently seeded south-facing garden, ideal for young children and hosting into the summer months. Hazeldene will undoubtedly attract a range of potential purchasers, and early viewing is strongly advised. To arrange a viewing, contact HMK Property on 02890397712.



HMK Property 8 Grand Parade, Belfast, BT5 5HH

T 02890397712





The facts you need to know...

- Newly refurbished bright and airy semi-detached family home
- Newly fitted stylish kitchen with integrated appliances including dishwasher and fridge/freezer
- Three good sized bedrooms, master with bay window
- Additional shower room with rainfall shower, low flush W/C and vanity unit
- Freshly tarmacked drive with room for two cars and ample street parking
- Dual aspect kitchen/dining and living area with feature media wall and bay window
- Rear lounge opening through patio doors on to garden
- Family bathroom with vanity unit and ceramic sink inset
- South facing newly seeded lawn to the rear with decked area
- Gas central heating/double glazed throughout



The property comprises...

GROUND FLOOR

Leading to...

PORCH

Original tiled flooring, partially panelled walls.

ENTRANCE HALL

19'7" x 4'11"

A bright entrance hall with tiled flooring, partially panelled walls, and cornice ceiling

DOWNSTAIRS W/C

Low flush W/C and hand basin





The property comprises...

KITCHEN DINER/LIVING ROOM

27'7" x 10'9"

Open plan living/dining room with dual aspect windows, bay window to the front of the property. Laminate flooring, feature media wall, vertical radiator. Stylish modern kitchen including integrated appliances of a single dishwasher, BEKO induction hob and oven, and fridge/freezer, a new 'NAVIEN' combi boiler, and recessed spotlights in the kitchen area.

LOUNGE

13'11" x 8'11"

A beautifully decorated rear lounge/snug with access to a south-facing garden through double patio doors. Partially panelled walls, laminate flooring.





The property comprises...

FIRST FLOOR

Carpeted landing with loft access through a window hatch with a built-in airing cupboard for additional storage

MASTER BEDROOM

14'4" x 10'7"

A large master bedroom with feature bay window overlooking the front of the property, skirting boards, and cornice ceiling.

BEDROOM TWO

11'1" x 10'11"

A tastefully decorated room with skirting boards, cornice ceiling, and picture window, overlooking a south-facing rear garden

BEDROOM THREE

11'5" x 8'11"

, large picture window overlooking south facing garden.

FAMILY BATHROOM

8'11" x 5'5"

Low flush W/C, vanity unit with ceramic sink inset, heated towel rail, extractor fan, recessed spotlights, bath, LVT flooring.

SHOWER ROOM

6'2" x 4'8"

Rainfall shower, low flush W/C, vanity unit with ceramic sink inset, storage underneath, heated towel rail, extractor fan, recessed spotlights.

OUTSIDE

Newly seeded south-facing lawn to the rear, with decking area. Freshly tarmacked driveway with space for multiple vehicles and ample on-street parking





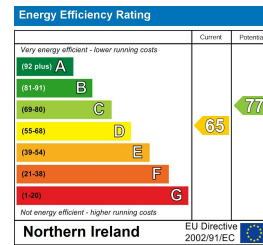


Additional Information

No. 14 Hazeldene Avenue, Ballyholme, sits in a quiet residential area, within walking distance to Bangor City Centre, and Ballyholme Village, with a host of local retailers, and thriving cafe culture all on your doorstep. Extensively renovated No.14 offers a turnkey finish, which will appeal to a host of buyers. Early viewing advised.

Need to sell to buy? Contact Hannah Kennedy to arrange a free property valuation 02890397712

ENERGY EFFICIENCY RATING

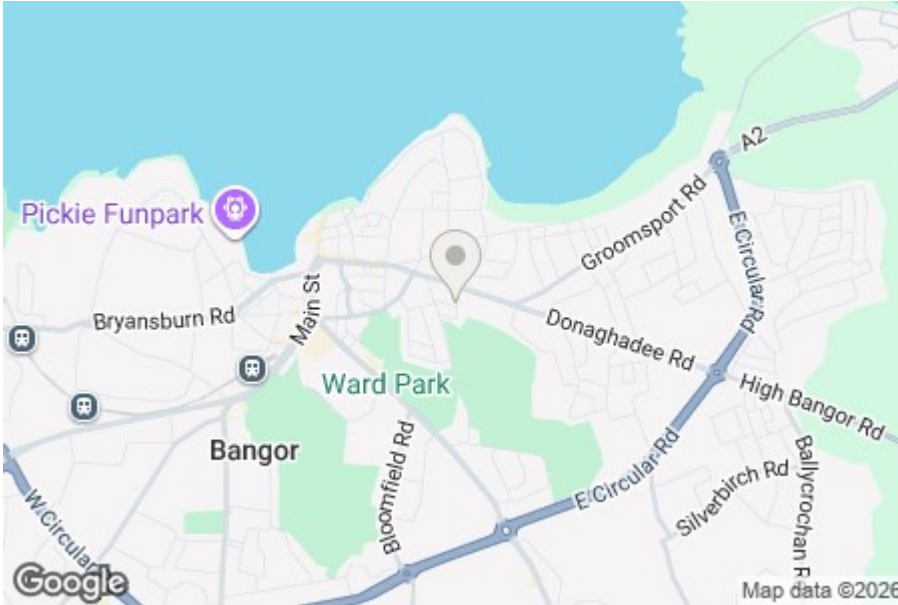


VIEWING

By appointment with HMK Property

Location

Hazeldene Avenue is off Donaghadee Road.



HMK Property - Sales - Lettings - Management - Mortgages

HMK Property
8 Grand Parade
Belfast
BT5 5HH
T: 02890397712
E: info@hmkproperty.com

www.hmkproperty.com

Request a Free property valuation

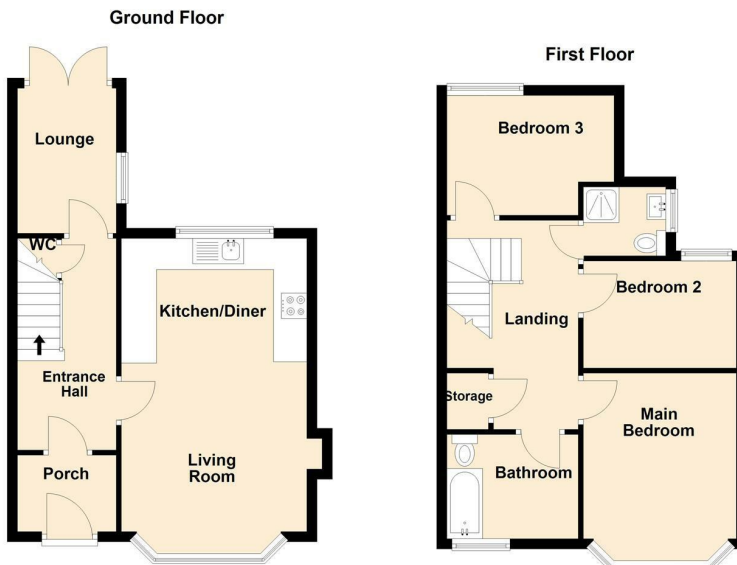
Whether you're downsizing, need more space or simply a change of scenery. Whatever your reason for moving, HMK Property holds the key...

Contact HMK today for a free property valuation 02890397712



DISCLAIMER

HMK Property have endeavoured to prepare these sales particulars as accurately and reliably as possible for the guidance of intending purchasers or lessees. These particulars are given for general guidance only and do not constitute any part of an offer or contract. The seller and agents do not give any warranty in relation to the property. We would recommend that all information contained in this brochure is verified by yourself or your professional advisors. Services, fittings, and equipment referred to in the sales details have not been tested and no warranty is given to their condition. All measurements contained within this brochure are approximate.



Please Note: This floorplan is for illustration purposes only
Plan produced using PlanUp.

14 Hazeldene Avenue, Ballyholme