



100 Slaght Road

Ballymena, BT42 2JJ

Offers Around £225,000



100 Slaght Road

, Ballymena, BT42 2JJ

Offers Around £225,000



ACCOMMODATION

GROUND FLOOR

ENTRANCE HALL

PVC double glazed front door with side screens. Wood laminate floor covering. Access to hot press and roof space.

LOUNGE

16'10 x 11'11 (5.13m x 3.63m)

Wood laminate floor covering. Dual aspect windows. Focal point fireplace with granite hearth.

DINING ROOM

12'2 10'6 (3.71m x 3.20m)

Wood laminate floor covering.

FITTED KITCHEN

18'3 x 10'0 (5.56m x 3.05m)

Modern fitted kitchen with high and low level storage units and work surface. Stainless steel sink unit. Space for cooker, washing machine, dishwasher and tumble dryer. Access to store with oil fired central heating boiler. PVC double glazed back door. Breakfast bar area. Part tiled walls and tiled floor.

BEDROOM 1

11'10 x 9'7 (3.61m x 2.92m)

Wood laminate floor covering.

BEDROOM 2

11'10 x 8'9 (3.61m x 2.67m)

Wood laminate floor covering. Integrated wardrobe.

BEDROOM 3

9'5 x 8'10 (2.87m x 2.69m)

Wood laminate floor covering.

FAMILY BATHROOM

Modern fitted three piece suite comprising panelled bath with electric shower over, wash hand basin and WC. Chrome towel radiator. Fully panelled walls.

EXTERNAL

Front garden in lawn with array of plants, trees and shrubs.

Front patio area.

Private driveway in tarmac.

Gated, low maintenance tarmacked rear yard.

Outside tap and lighting.

PVC fascia, soffits and rainwater goods.

DETACHED DOUBLE GARAGE

22'10 x 19'0 (6.96m x 5.79m)

Twin roller shutter doors. Concrete floor. Power and lighting.



Road Map



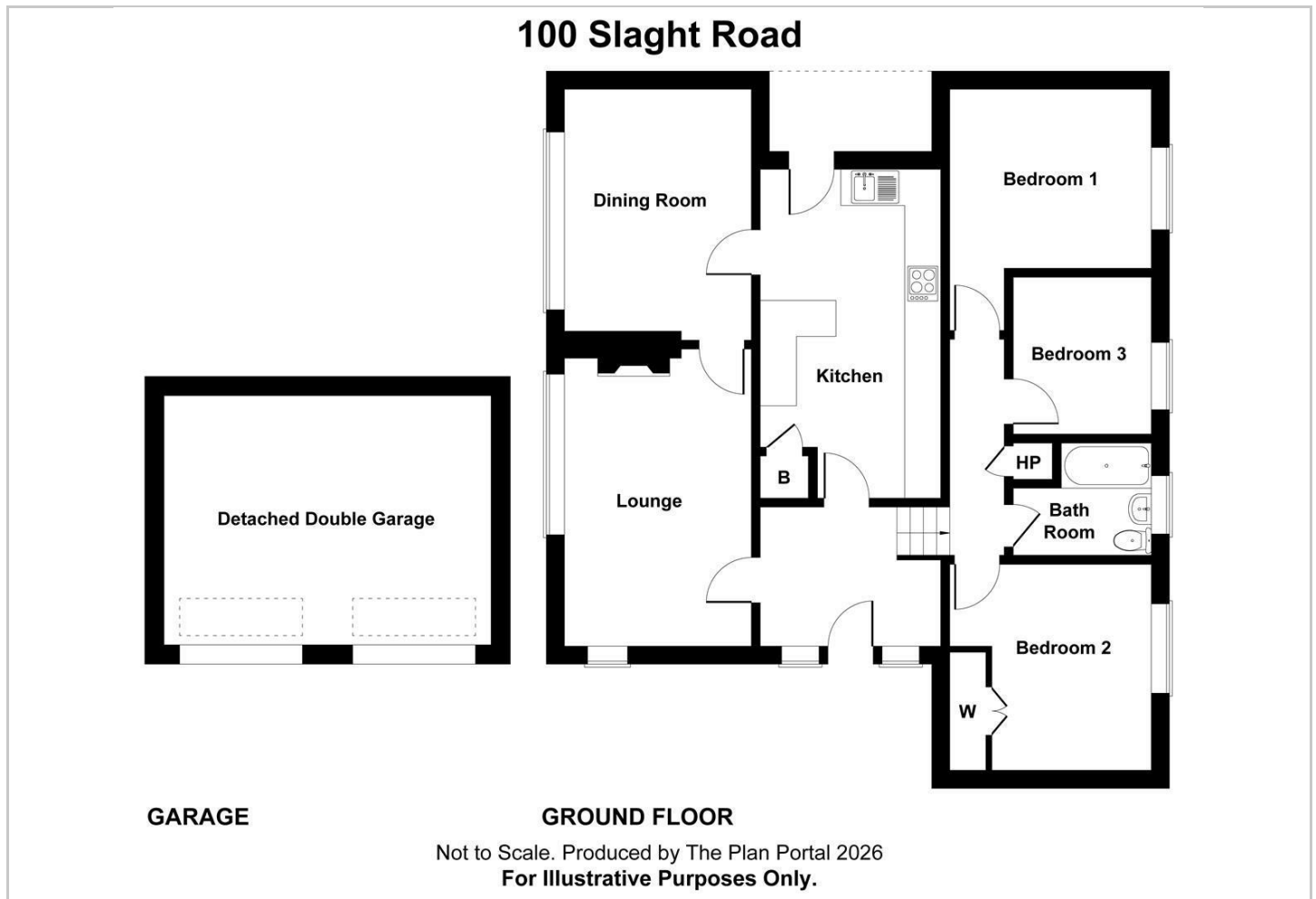
Hybrid Map



Terrain Map



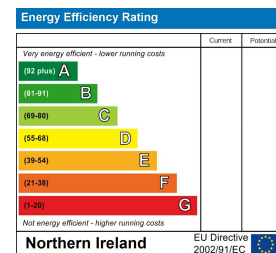
Floor Plan



Viewing

Please contact our Ballymena Office on 02825655733 if you wish to arrange a viewing appointment for this property or require further information.

Energy Efficiency Graph



These particulars, whilst believed to be accurate are set out as a general outline only for guidance and do not constitute any part of an offer or contract. Intending purchasers should not rely on them as statements of representation of fact, but must satisfy themselves by inspection or otherwise as to their accuracy. No person in this firm's employment has the authority to make or give any representation or warranty in respect of the property. Edmondson Estates have not tested any services, equipment, or facilities within the premises and will not be liable, in negligence or otherwise, for any loss arising from the use of these particulars.