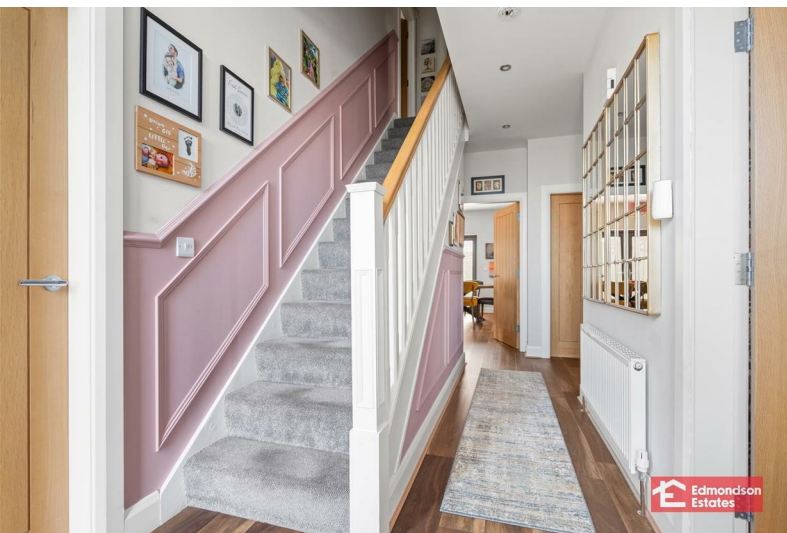




66 Castlegate

Galgorm, Ballymena, BT42 1SD

Offers Over £394,950



66 Castlegate

Galgorm, Ballymena, BT42 1SD

Offers Over £394,950



ACCOMMODATION

GROUND FLOOR

ENTRANCE HALL

PVC composite front door. LVT flooring. Stairwell to first floor. Access to under stair store.

LOUNGE

15'3 x 12'4 (4.65m x 3.76m)

LVT flooring. Focal point electric fire. Dual aspect.

PRINCIPAL BEDROOM

12'10 x 11'6 (3.91m x 3.51m)

Box bay window. Access to store.

EN-SUITE

Modern fitted three piece suite comprising shower cubicle with mains shower and drench shower head over, vanity unit and WC. Chrome towel radiator. Fully tiled walls to shower and tiled floor.

BEDROOM 4

12'2 x 9'7 (3.71m x 2.92m)

widest points. LVT flooring.

DELUXE FAMILY BATHROOM

Modern fitted four piece suite comprising free standing bath, shower cubicle with mains shower and drench shower head over, floating vanity unit and WC. Chrome towel radiator. Part tiled walls.

OPEN PLAN KITCHEN/LIVING/DINING AREA

30'7 x 26'6 (9.32m x 8.08m)

widest points. Modern fitted shaker kitchen with high and low level storage units and work surfaces. Composite 1.5 bowl sink unit. Integrated appliances

to include 4 ring gas hob with extractor fan over, fridge freezer, oven and dishwasher. Integrated wine cooler. Breakfast bar area. Part tiled walls. LVT flooring. PVC double glazed French doors to garden.

UTILITY ROOM

6'3 x 5'7 (1.91m x 1.70m)

High and low level storage units and work surfaces. Stainless steel sink. Space for low level appliances. Gas fired central heating boiler (housed). PVC double glazed side door.

FIRST FLOOR

LANDING

Access to hot press and roof space.

BEDROOM 2

19'10 x 11'4 (6.05m x 3.45m)

Wall to wall integrated storage. Eaves storage. Velux window.

BEDROOM 3

19'10 x 11'6 (6.05m x 3.51m)

Eaves storage. Velux window.

DELUXE FAMILY BATHROOM

Modern fitted four piece suite comprising free standing bath, shower cubicle with mains shower and drench head over, vanity unit and WC. Chrome towel radiator. Part tiled walls and tiled floor.

EXTERNAL

Front garden in lawn.

Private driveway in tarmac.

Generous enclosed rear garden in lawn with resin patio area.

Outside tap, lighting and EV charger point.

GARDEN ROOM
19'3 x 14'3 (5.87m x 4.34m)



Road Map



Hybrid Map



Terrain Map



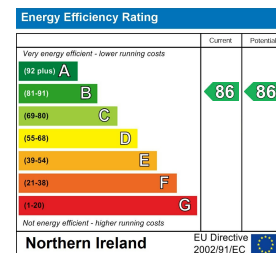
Floor Plan



Viewing

Please contact our Ballymena Office on 02825655733 if you wish to arrange a viewing appointment for this property or require further information.

Energy Efficiency Graph



These particulars, whilst believed to be accurate are set out as a general outline only for guidance and do not constitute any part of an offer or contract. Intending purchasers should not rely on them as statements of representation of fact, but must satisfy themselves by inspection or otherwise as to their accuracy. No person in this firm's employment has the authority to make or give any representation or warranty in respect of the property. Edmondson Estates have not tested any services, equipment, or facilities within the premises and will not be liable, in negligence or otherwise, for any loss arising from the use of these particulars.