



27 Ballymena Road

Cullybackey, Ballymena, BT42 1DT

Offers Around £159,950



27 Ballymena Road

Cullybackey, Ballymena, BT42 1DT

Offers Around £159,950



GROUND FLOOR

Hallway

Lounge

13'6" x 11'10" (4.14 x 3.61)

Multi fuel stove. Laminate flooring.

Kitchen / Family Dining

16'6" x 8'0" (5.03 x 2.45)

Cream high and low level units. Double stainless steel sink. Halogen hob. New eye level oven. Space for fridge/freezer. Store cupboard with GFCH boiler. Space for family dining table.

Back Hall

6'8" x 5'9" (2.05 x 1.77)

Family Bathroom

6'8" x 5'9" (2.05 x 1.77)

LFWC and WHB. P Shaped bath with shower over, with electric shower. Chrome towel rail. Fully tiled.

Bedroom 1 - Rear

10'7" x 11'6" (3.25 x 3.53)

Laminate flooring.

FIRST FLOOR

Landing

Bedroom 2 - Front

9'10" x 13'6" (3.02 x 4.14)

Built in cupboard.

Bedroom 3 - Rear

8'6" x 11'2" (2.61 x 3.42)

Shower Room

7'11" x 7'11" (2.43 x 2.43)

LFWC and WHB within pedestal. Quadrant shower with electric shower. Hot-press cupboard.

OUTSIDE

Tarmacked and gated driveway and parking. Gardens to the front laid in lawns. Lean to shed. Store. Gas tank.



Road Map



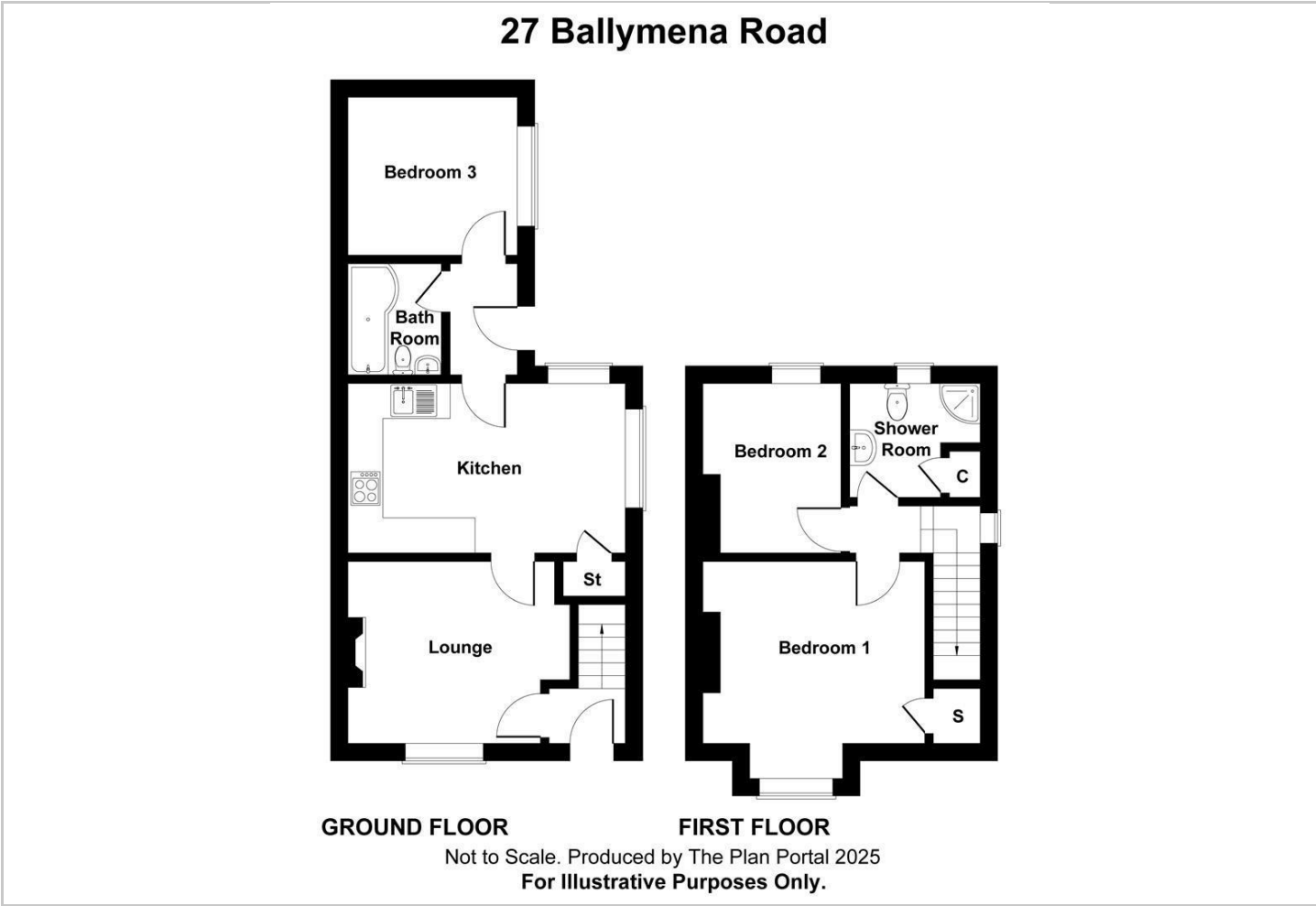
Hybrid Map



Terrain Map



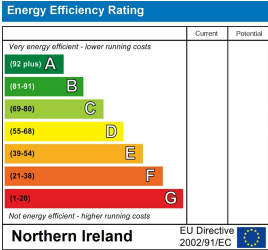
Floor Plan



Viewing

Please contact our Ballymena Office on 02825655733 if you wish to arrange a viewing appointment for this property or require further information.

Energy Efficiency Graph



These particulars, whilst believed to be accurate are set out as a general outline only for guidance and do not constitute any part of an offer or contract. Intending purchasers should not rely on them as statements of representation of fact, but must satisfy themselves by inspection or otherwise as to their accuracy. No person in this firms employment has the authority to make or give any representation or warranty in respect of the property. Edmondson Estates have not tested any services, equipment, or facilities within the premises and will not be liable, in negligence or otherwise, for any loss arising from the use of these particulars.