



9 Glenview Cottages

Glenarm, Ballymena, BT44 0DJ

Offers Around £139,950



9 Glenview Cottages

Glenarm, Ballymena, BT44 0DJ

Offers Around £139,950



ACCOMMODATION

ENTRANCE HALL

PVC double glazed front door. Wood laminate floor covering. Access to roof space.

LOUNGE

21'1 x 10'0 (6.43m x 3.05m)

Focal point multi-fuel stove in Inglenook style recess on granite hearth. Countryside views to front.

KITCHEN WITH INFORMAL DINING AREA

13'11 x 13'2 (4.24m x 4.01m)

Modern fitted kitchen with high and low level storage units and work surfaces. Composite 1.5 bowl sink unit. Space for washing machine. Integrated 4 ring gas hob with extractor fan over. Tiled floor.

LEAN TO

11'11 x 4'3 (3.63m x 1.30m)

PVC double glazed rear door to garden.

BEDROOM 1

9'11 x 8'7 (3.02m x 2.62m)

Access to store. Countryside views to front.

BEDROOM 2

11'11 x 9'11 (3.63m x 3.02m)

widest points.

BEDROOM 3

9'11 x 8'10 (3.02m x 2.69m)

Countryside views to rear.

FAMILY BATHROOM

Fitted four piece suite comprising panelled bath with electric shower over, wash hand basin and WC. Access to hot press. Fully tiled walls and tiled floor.

EXTERNAL

Front garden in lawn.

Private driveway in tarmac.

Low maintenance rear yard with dog run area.

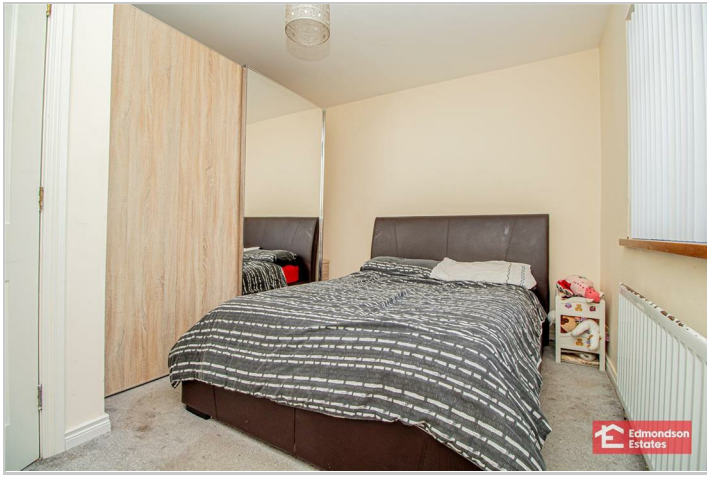
Panoramic countryside views to front & rear.

Outside tap and lighting.

LARGE DETACHED GARAGE

24'3 x 14'3 (7.39m x 4.34m)

Electric roller shutter door. Service door. Space for appliances. Power and light.



Road Map



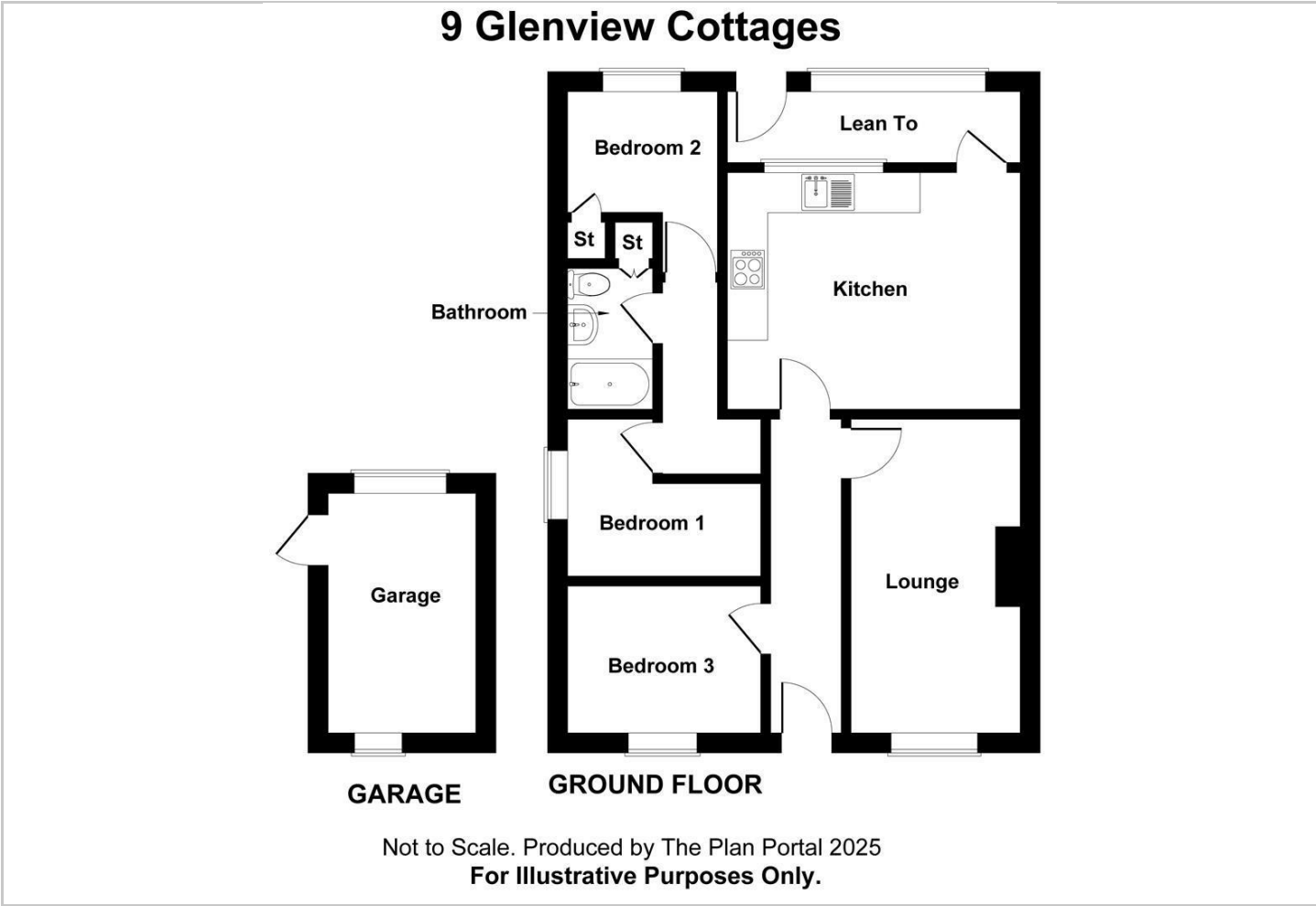
Hybrid Map



Terrain Map



Floor Plan



Viewing

Please contact our Ballymena Office on 02825655733 if you wish to arrange a viewing appointment for this property or require further information.

Energy Efficiency Graph



These particulars, whilst believed to be accurate are set out as a general outline only for guidance and do not constitute any part of an offer or contract. Intending purchasers should not rely on them as statements of representation of fact, but must satisfy themselves by inspection or otherwise as to their accuracy. No person in this firms employment has the authority to make or give any representation or warranty in respect of the property. Edmondson Estates have not tested any services, equipment, or facilities within the premises and will not be liable, in negligence or otherwise, for any loss arising from the use of these particulars.