

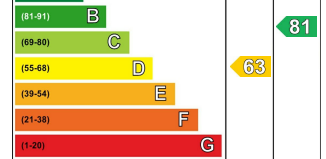


## 60 HAWTHORNE COURT

Bangor BT20 3HR

- 3 Bedrooms
- Spacious Lounge
- Kitchen / Dining Area
- uPVC Double Glazing
- Oil Fired Heating System
- White Bathroom Suite
- Open Aspect / Cul De Sac
- Well Presented Throughout
- No Onward Chain

Energy Efficiency Rating		
	Current	Potential
Very energy efficient - lower running costs		
(92 plus) <b>A</b>		
(81-91) <b>B</b>		
(69-80) <b>C</b>		
(55-68) <b>D</b>		
(39-54) <b>E</b>		
(21-38) <b>F</b>		
(1-20) <b>G</b>		
Not energy efficient - higher running costs		
<b>Northern Ireland</b>		
		EU Directive 2002/91/EC



**Offers Over £160,000**

# 60 Hawthorne Court

, Bangor, BT20 3HR



## ACCOMMODATION

Entrance door into ...

## ENTRANCE PORCH

Laminate wooden floor.

## LOUNGE

17'1" x 15'8" (at widest points)  
(5.23m x 4.78m (at widest points))  
Open fireplace.

## DINING ROOM

13'8" x 7'8" (4.17m x 2.34m)  
Laminate wooden floor.

## KITCHEN

10'5" x 7'4" (3.18m x 2.26m)  
Range of high and low level  
cupboards and drawers with roll

edge work surfaces. Extractor  
hood with integrated fan and  
light. Single drainer stainless steel  
sink unit with mixer taps.  
Plumbed for washing machine.  
Fully tiled walls.

## STAIRS TO 1ST FLOOR LANDING

Built-in hotpress with insulated  
copper cylinder and immersion  
heater.

## BEDROOM 1

13'8" x 12'0" (4.19m x 3.68m)  
Built-in robe.

## BEDROOM 2

11'1" x 10'4" (3.38m x 3.15m)  
Laminated wooden floor. Built-in  
wardrobe.

## BEDROOM 3

10'0" x 7'4" (3.07m x 2.26m)

## BATHROOM

Comprising: Panelled bath. Corner  
shower cubicle with electric  
shower. W.C. Semi pedestal wash  
hand basin. W.C . Laminated  
wooden floor. Downlights.

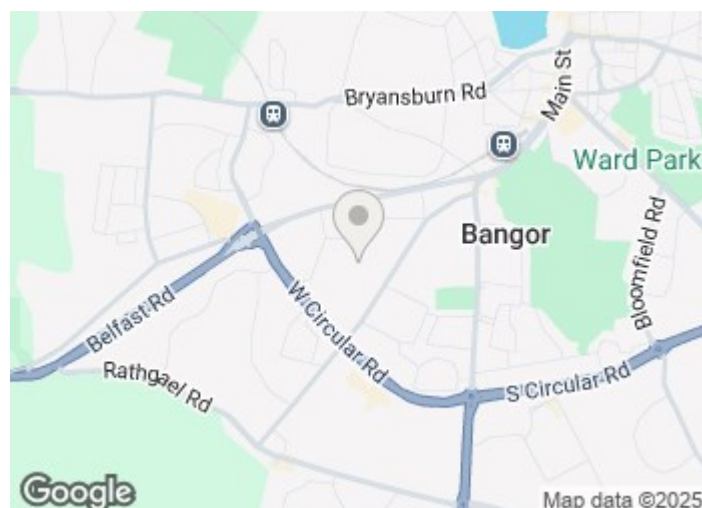
## OUTSIDE

### FRONT

Driveway in stones. Light.

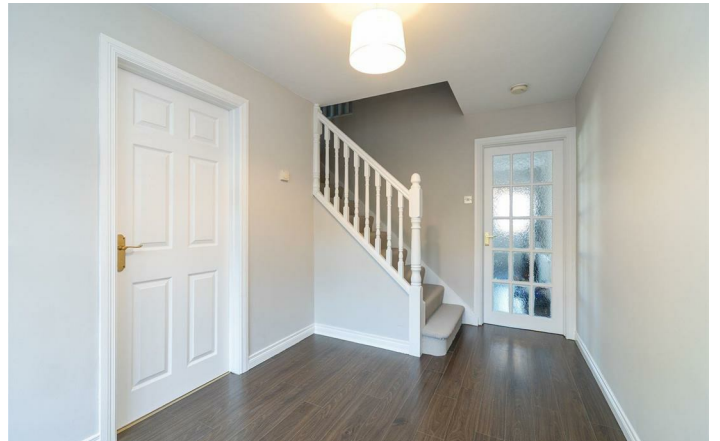
### REAR

Enclosed garden in stones.  
Decked patio. Light. Tap. Boiler  
House. PVC Oil Tank.



## Directions





Floor Plan

These particulars, whilst believed to be accurate are set out as a general outline only for guidance and do not constitute any part of an offer or contract. Intending purchasers should not rely on them as statements of representation of fact, but must satisfy themselves by inspection or otherwise as to their accuracy. No person in this firms employment has the authority to make or give any representation or warranty in respect of the property.

