

10 CHURCH VIEW COTTAGES

Bangor BT20 3EJ

- 3 Bedrooms
- 1+ Reception Room
- uPVC Double Glazing
- Oil Fired Heating System
- Oal Kitchen
- White Bathroom Suite
- Well Presented Throughout
- No Onward Chain
- Small Complex

Energy Efficiency Rating		
	Current	Potential
Very energy efficient - lower running costs		
(92 plus) A		
(81-91) B		
(69-80) C		
(55-68) D		
(39-54) E	55	67
(21-38) F		
(1-20) G		
Not energy efficient - higher running costs		
Northern Ireland		EU Directive 2002/91/EC

Offers Over £170,000

10 Church View Cottages

, Bangor, BT20 3EJ



ACCOMMODATION

ENTRANCE PORCH

Light point. Laminated wood floor.

DINING HALL

10'5" x 9'2" (3.18m x 2.79m)

Laminated wood floor. Understairs cloak/store. Built-in hotpress with insulated cylinder and immersion heater.

KITCHEN

16'8" x 7'10" widening to 8'6" (5.08m x 2.39m widening to 2.59m)

Range of oak high and low level cupboards and drawers with roll edge work surfaces. 11/2 tub single drainer stainless steel sink unit with mixer taps. Extractor hood with

integrated fan and light. Plumbed for washing machine and dishwasher. Part tiled walls. Laminated wood floor.

LOUNGE

16'9" x 10'5" (5.11m x 3.18m)

Open fireplace with slate surround and hearth, pine mantel. Double glazed French doors to rear.

FIRST FLOOR

BEDROOM 1

16'8" x 10'5" max (5.08m x 3.18m max)

BEDROOM 2

10'5" x 8'8" (3.18m x 2.64m)
Laminated wood floor.

BEDROOM 3

7'8" x 7'2" (2.34m x 2.18m)

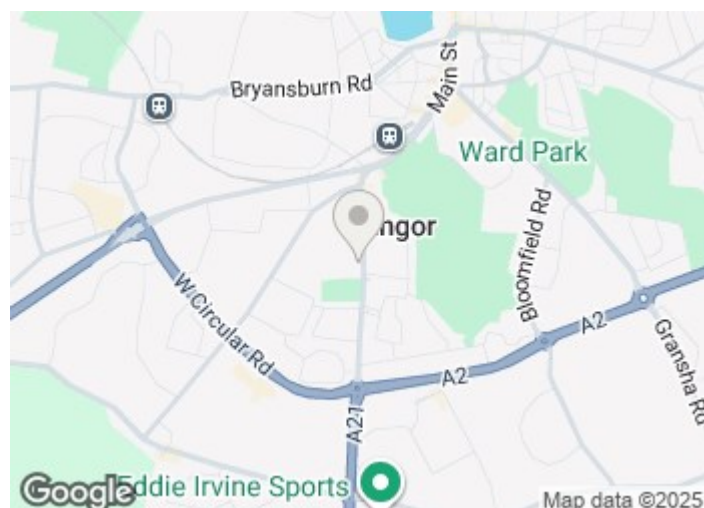
BATHROOM

White suite comprising: Panelled bath with telephone hand shower and Triton electric shower over. Pedestal wash hand basin. W.C. Part tiled walls. Ceramic tiled floor. Built-in extractor fan.

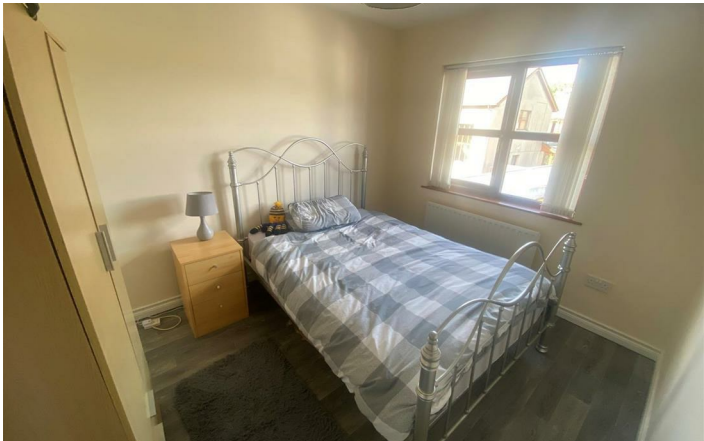
OUTSIDE

REAR GARDEN

In artificial grass with shrub beds and original privet hedge. Car park space and communal spaces. Bin area. PVC oil tank.



Directions



Floor Plan

These particulars, whilst believed to be accurate are set out as a general outline only for guidance and do not constitute any part of an offer or contract. Intending purchasers should not rely on them as statements of representation of fact, but must satisfy themselves by inspection or otherwise as to their accuracy. No person in this firms employment has the authority to make or give any representation or warranty in respect of the property.

