



ULSTER PROPERTY SALES

UPS

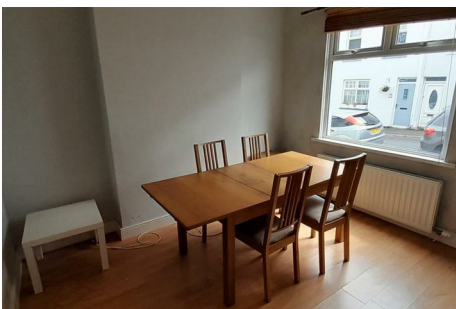
BANGOR BRANCH

88 Main Street, Bangor, County Down,
BT20 4AC

028 9127 1185

bangor@ulsterpropertysales.co.uk

NETWORK STRENGTH - LOCAL KNOWLEDGE



18 RAILWAYVIEW STREET

Bangor BT20 3BZ

- City Centre Terrace Property
- 3 Bedrooms
- 2 Receptions
- Serviceable Kitchen
- White Bathroom
- Oil Fired Central Heating
- Double Glazing
- Enclosed Rear Yard

Energy Efficiency Rating		
	Current	Potential
Very energy efficient - lower running costs		
(92 plus) A		
(81-91) B		
(69-80) C		
(55-68) D		
(39-54) E	57	68
(21-38) F		
(1-20) G		
Not energy efficient - higher running costs		
Northern Ireland		EU Directive 2002/91/EC

Offers Over £130,000

18 Railwayview Street

, Bangor, BT20 3BZ



ACCOMMODATION

White uPVC double glazed front door.

ENTRANCE HALL

Wooden laminate flooring. Single panel radiator. White uPVC double glazed window. Under stairs cloak space.

LOUNGE

11'3" max x 9'9" max (3.43m max x 2.97m max)

Feature 4 pane internal glazed door from hall. Wooden laminate flooring. Double panel radiator. Corniced ceiling.

"L" SHAPED DINING/FAMILY ROOM

15'8" max into recess x 10'1" max (4.78m max into recess x 3.07m max)

Feature 4 pane internal glazed door from hall. Wooden laminate flooring. Double panel radiator. Part ceiling downlighting. Attractive cast iron fireplace with tiled insets. Open arch to ...

KITCHEN

10'8" max x 7'3" max (3.25m max x 2.21m max)

High and low level units with roll edge work surfaces. Stainless steel sink unit with mixer taps. Extractor fan. Integrated 4 ring hob and oven. Plumbed for washing machine. Part tiled walls. White uPVC double glazed windows. Wooden laminate flooring.

STAIRS TO 1ST FLOOR LANDING

Access to roofspace.

BEDROOM 1 (Front)

11'3" max x 9'3" max (3.43m max x 2.82m max)

White uPVC double glazed windows. Single panel radiator. Wooden laminate flooring.

BEDROOM 2 (Rear)

10'0" max x 9'2" max (3.05m max x 2.79m max)

White uPVC double glazed windows. Single panel radiator. Wooden laminate flooring.

Built-in hotpress with insulated copper cylinder. Willis type immersion heater.

CHILDRENS BEDROOM 3 / STUDY

6'9" x 6'0" (2.06m x 1.83m)

White uPVC double glazed windows. Wooden laminate flooring.

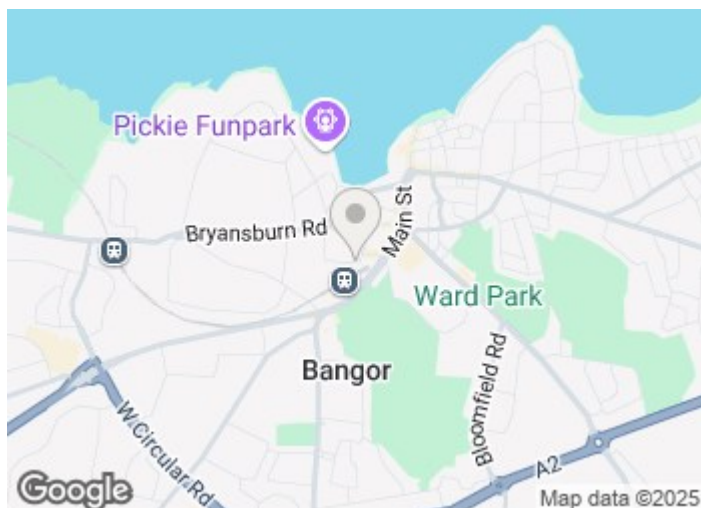
BATHROOM

White suite comprising: Panelled bath with Mira electric shower over. Shower screen. Pedestal wash hand basin. Low flush W.C. Single panel radiator. Tiled floor. Part tiled walls. White uPVC double glazed windows.

OUTSIDE

REAR

Enclosed area with PVC oil tank. Boiler house with oil fired boiler. Outside tap.



Directions



Floor Plan

These particulars, whilst believed to be accurate are set out as a general outline only for guidance and do not constitute any part of an offer or contract. Intending purchasers should not rely on them as statements of representation of fact, but must satisfy themselves by inspection or otherwise as to their accuracy. No person in this firms employment has the authority to make or give any representation or warranty in respect of the property.

