



Sharman House, set in North Down's stunning landscape, is a sought-after apartment development with breathtaking views over Belfast Lough.

This spacious second-floor apartment offers a bright living and dining area with original cornicing and large windows. The fully fitted kitchen includes integrated appliances and a casual dining space.

It features two double bedrooms with built-in wardrobes, including a master with an en suite. A main bathroom and separate storage room add convenience.

Residents benefit from gas-fired central heating with a new boiler, an intercom system, electric-gated access, and ample parking.

Exceptional amenities include mature gardens, a private tennis court, a helipad, and direct shoreline frontage. The North Down coastal path and Crawfordsburn Village are just a short walk away.

Offering elegance and coastal charm, this apartment provides a serene lifestyle in a premier location.

Offers Over  
£355,000

Apt 18 Sharman House,  
Bangor,  
BT19 1XN

---

Viewing by  
appointment  
through agent  
028 9042 4747



- Spacious second-floor apartment with stunning views over Belfast Lough
- Bright and airy living space with original features and sea and garden views
- Fully fitted kitchen with integrated appliances and casual dining area
- Two generous double bedrooms with built-in wardrobes
- Principal bedroom with private en suite shower room
- Main family bathroom and additional separate storage room
- Gas-fired central heating with a brand-new boiler
- Secure entry via electric gates and intercom system
- Beautifully maintained communal gardens, private tennis court, and shoreline access
- Convenient parking for residents and guests
- Prime location near North Down coastal paths and a short walk to Crawfordsburn Village



The Property Comprises:

Second Floor

COMMUNAL HALL:

Double doors to . . .

ENTRANCE HALL: Window overlooking the sea, solid wood flooring.



LIVING ROOM: 21' 4" x 18' 1" (6.5m x 5.5m) (at widest points). Solid wood floor, dual aspect windows with sea views, marble fireplace with gas fire.





KITCHEN: 16' 1" x 15' 9" (4.9m x 4.8m) (at widest points). Excellent range of high and low level units, granite worktops, gas double oven, integrated fridge and freezer, integrated microwave, waste disposal unit, dishwasher, washing machine, seated dining area, stone tiled floor, large window overlooking the forest.



BATHROOM: Comprising wash hand basin with chrome mixer tap, low flush wc, bidet, tiled panelled bath with shower enclosure, large linen cupboard, towel rail, ceramic tiled floor.



BEDROOM (1): 14' 5" x 14' 1" (4.4m x 4.3m) (at widest points). Two large windows overlooking the sea.

ENSUITE SHOWER ROOM: Wash hand basin with chrome mixer tap, bidet, low flush wc, fully tiled shower enclosure, heated towel rail, storage cupboard, ceramic tiled floor.



BEDROOM (2): 13' 5" x 10' 10" (4.1m x 3.3m) (at widest points). Two windows overlooking the sea, built-in wardrobes.





STORAGE ROOM: 6' 3" x 5' 7" (1.9m x 1.7m) With lighting. (Located on the Second Floor in the Communal Area).

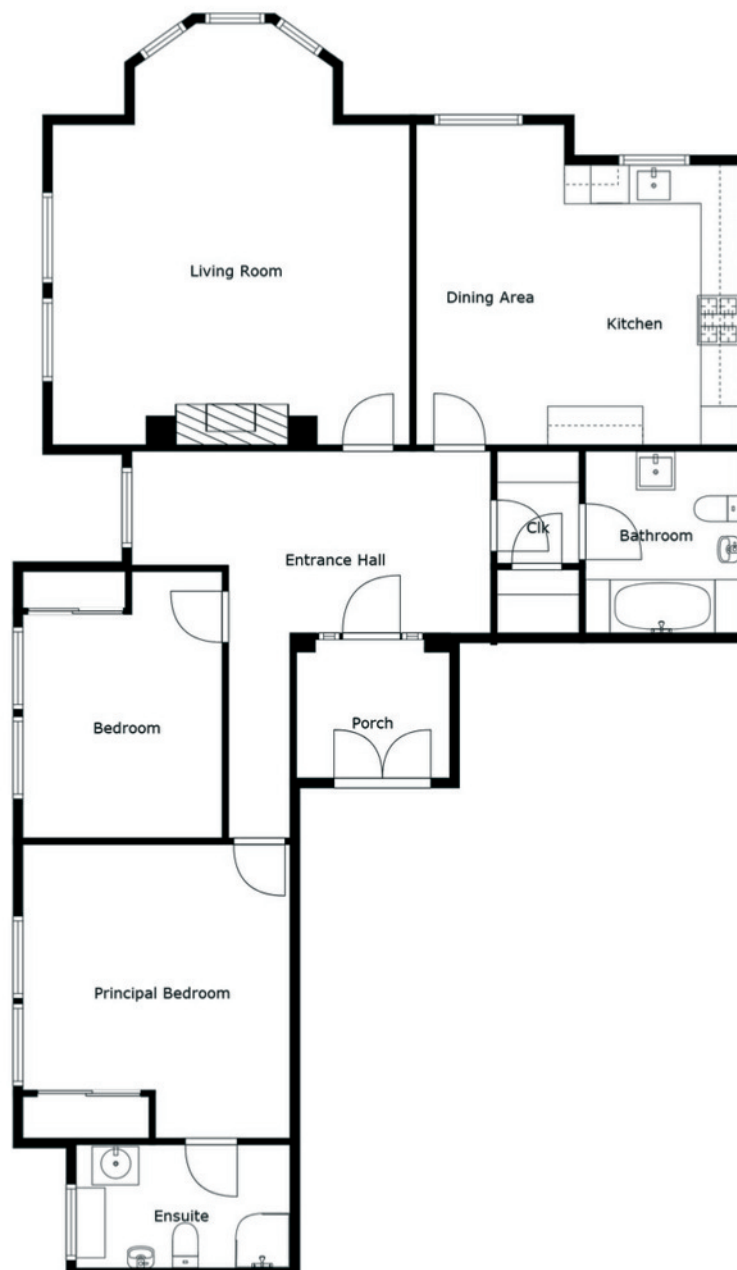


Management company

M.B Wilson.

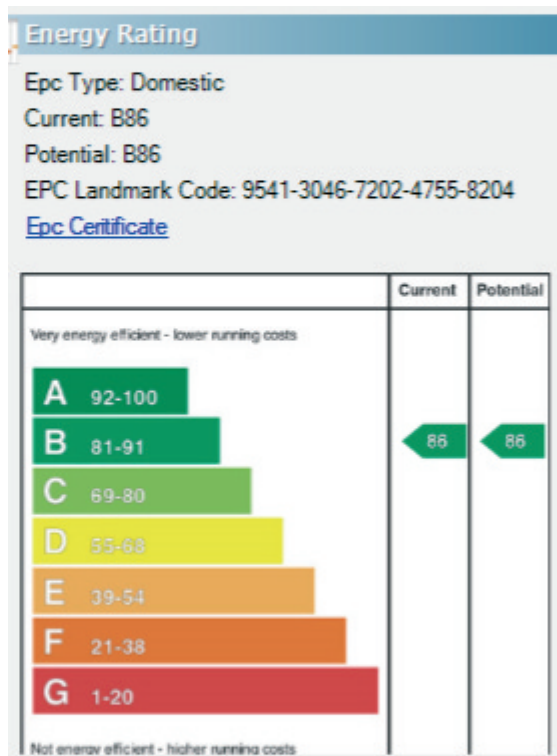
Service Charge

£1884 per annum.



Telephone 028 9042 4747  
[www.templetonrobinson.com](http://www.templetonrobinson.com)

Sizes And Dimensions Are Approximate. Actual May Vary.



## Location:

Travelling from Bangor towards Crawfordsburn Village on the Crawfordsburn Road take a right turn into Old Windmill Road. Sharman House is at the bottom of the lane accessed via electric gates. Sharman is the large building to the right as you come through gates. Number 18 is accessed through the entrance door on the right side.

These particulars do not constitute any part of an offer or contract. None of the statements contained in these particulars are to be relied on as statements or representations of fact and intending purchasers must satisfy themselves by inspection or otherwise to the correctness of each of the statements contained in these particulars. The Vendor does not make or give, neither Templeton Robinson, nor any person in its employment has any authority to make or give, any representation or warranty whatever in relation to this property. All dimensions are taken to nearest 3 inches.