



227 Bangor Road,
Craigavad,
HOLYWOOD,
BT18 0JQ

Offers Around
£695,000

Viewing by
appointment with
& through agent
028 90 424747





Set in a desirable and convenient location just moments from the charming and highly sought-after area of Holywood, this impressive, detached residence offers generous and versatile accommodation ideal for modern family living.

The property boasts five well-proportioned bedrooms, providing ample space for growing families or those seeking additional guest accommodation. Complementing this are three good sized reception rooms, perfect for both formal entertaining and relaxed day to day living. At the heart of the home is a good sized kitchen with casual dining.

One of the standout features is the detached annex, currently used as a gym with potential for a variety of uses including guest accommodation, studio or workspace.

Externally the property is accessed via electric gates to private, easily maintained rear gardens and large patio area ideal for entertaining.

Situated close to Holywood, Helens Bay, Crawfordsburn and within easy reach of Bangor and a range of amenities including shops, cafes, popular schools and excellent transport links.



- Spacious detached family home in a very convenient location
 - 3 well proportioned reception rooms
 - Modern fitted kitchen open plan to casual dining
 - Separate utility room
 - Downstairs cloakroom with WC
 - 5 bedrooms, 2 with ensuite shower rooms
 - Bathroom suite with separate shower
- Gas fired central heating & hardwood double glazed windows
 - Garden room ideal as gym or home office
- Easily maintained site with ample secure private parking

Telephone 028 9042 4747

www.templetonrobinson.com

The Property Comprises:

Ground Floor

Mahogany hardwood double glazed front door with sidelight to . . .

ENTRANCE HALL: Feature marble fireplace with castiron inset and hearth, light oak effect laminate flooring, cloakroom and store.

DOWNSTAIRS W.C.: Comprising low flush wc, wash hand basin, fully tiled walls.

FAMILY ROOM: 20' 0" x 18' 4" (6.1m x 5.6m) (into bay window). Marble fireplace with mahogany surround piped for gas fire, light oak effect laminate flooring



Double doors to . . .

DINING ROOM: 17' 1" x 12' 6" (5.2m x 3.8m) Door to kitchen.



LIVING ROOM: 19' 4" x 10' 6" (5.9m x 3.2m) Light oak effect laminate flooring.



STORE ROOM:

MODERN FULLY FITTED KITCHEN OPEN PLAN TO CASUAL DINING: 21' 4" x 20' 0" (6.5m x 6.1m) Excellent range of high and low level units with granite worktops, twin bowl Belfast sink unit with mixer tap, Aga cooker, Masterchef four ring gas hob with hotplate and ovens, kitchen island with granite worktop, ceramic tiled floor.



UTILITY ROOM: 8' 6" x 7' 3" (2.6m x 2.2m) Range of high and low level units with granite worktops, single drainer stainless steel sink unit, plumbed for washing machine and tumble dryer, ceramic tiled floor, part tiled walls.



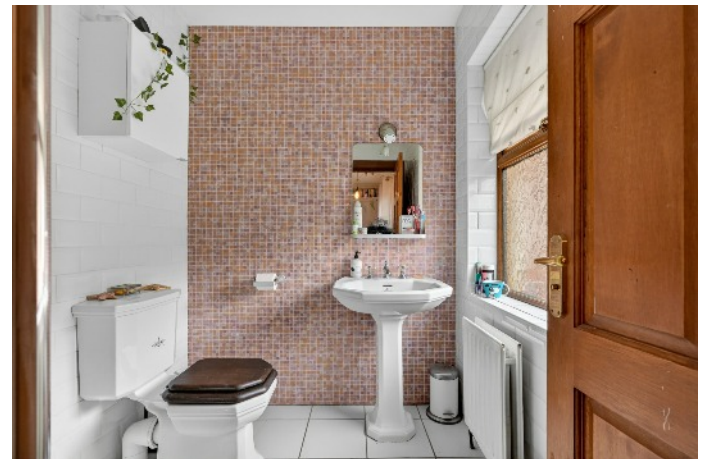
First Floor

LANDING: Linen cupboard and separate hotpress with lagged copper cylinder.



BEDROOM (2): 19' 8" x 10' 6" (6m x 3.2m) Light oak effect laminate flooring.

ENSUITE SHOWER ROOM: Fully tiled built-in shower cubicle with built-in shower, low flush wc, pedestal wash hand basin, ceramic tiled floor, fully tiled walls.



PRINCIPAL BEDROOM: 20' 0" x 11' 2" (6.1m x 3.4m)

LARGE ENSUITE SHOWER ROOM: Fully tiled walk-in shower cubicle with overhead shower and body jets, vanity unit with mixer tap, low flush wc, heated towel rail, ceramic tiled floor, fully tiled walls.



BEDROOM (3): 13' 9" x 7' 7" (4.2m x 2.3m) Light oak effect laminate flooring.



BEDROOM (4): 15' 1" x 8' 6" (4.6m x 2.6m) Light oak effect laminate flooring.



BEDROOM (5): 19' 8" x 11' 2" (6m x 3.4m) Light oak effect laminate flooring.



BATHROOM: White suite comprising panelled bath with mixer tap, low flush wc, bidet, pedestal wash hand basin, fully tiled shower cubicle, fully tiled walls, ceramic tiled floor, heated towel rail.



Outside

Electric gate to private secure parking.

ANNEX: 18' 4" x 16' 5" (5.6m x 5m) Currently used as a gym, ideal for home office, range of built-in cupboards.

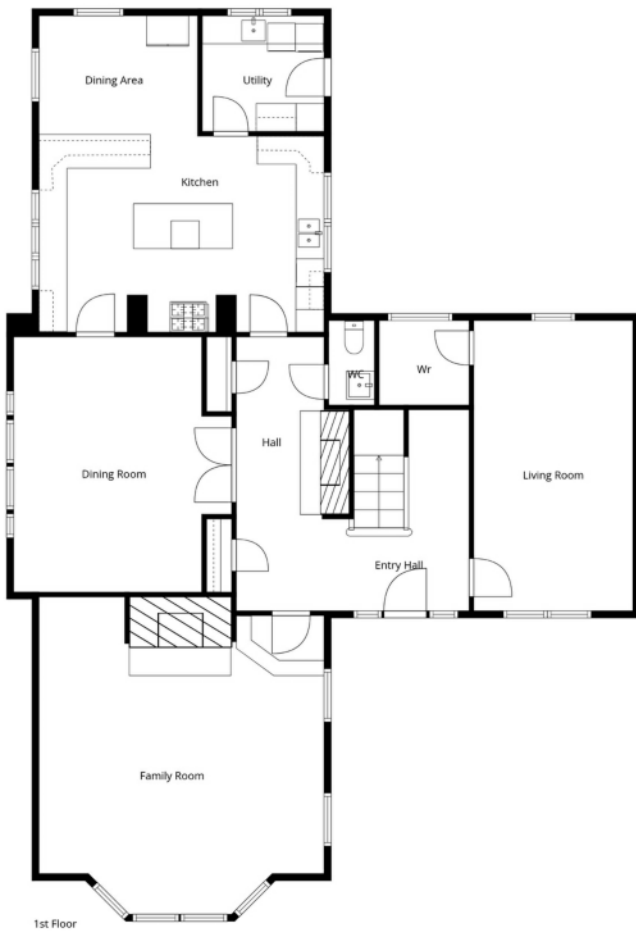


Enclosed low maintenance rear garden in lawn and large paved patio.



Location:

Travelling from Holywood to Bangor number 227 is on the right hand side before the traffic lights at Seahill.



Sizes And Dimensions Are Approximate. Actual May Vary.

North Down - 028 90 42 4747
Lisburn Road - 028 90 66 3030
Ballyhackamore - 028 90 65 0000
Lisburn - 028 92 66 1700

www.templetonrobinson.com

MONEY LAUNDERING REGULATIONS: Intending purchasers will be asked to produce identification documentation and we would ask for your co-operation in order that there will be no delay in agreeing the sale.

These particulars do not constitute any part of an offer or contract. None of the statements contained in these particulars are to be relied on as statements or representations of fact and intending purchasers must satisfy themselves by inspection or otherwise to the correctness of each of the statements contained in these particulars. The Vendor does not make or give, neither Templeton Robinson, nor any person in its employment has any authority to make or give, any representation or warranty whatever in relation to this property. All dimensions are taken to nearest 3 inches.

