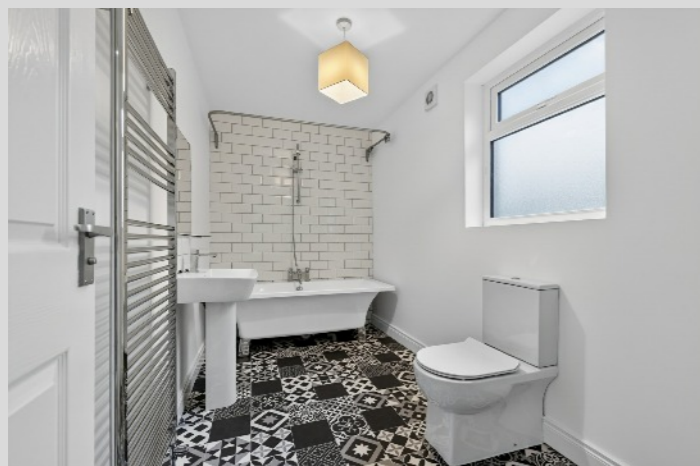


Outside

REAR YARD

TEMPLETON  
ROBINSON

TEMPLETON  
ROBINSON



Sizes And Dimensions Are Approximate. Actual May Vary.



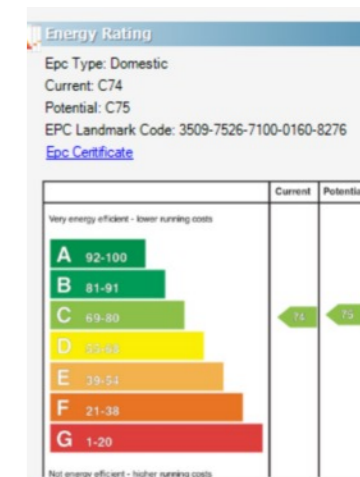
This excellent mid terrace property has been fully renovated throughout. Offering excellent accommodation throughout comprising of, lounge through to dining room. Luxury kitchen with integrated appliances, 2 double bedrooms plus floored roofspace and a luxury modern bathroom suite. The property also benefits from phoenix gas central heating, uPVC double glazing and an enclosed rear courtyard.

**Offers Around  
£199,950**

52 Trevor Street,  
Holywood,  
BT18 9NA

Viewing by  
appointment with  
& through agent  
028 9042 4747

With an excellent location, only several minutes walk from Holywood High Street, as well as a high standard of finish, this property really does provide the opportunity for a First Time Buyer to set their furniture down and move in or Investor.



North Down - 028 90 42 4747  
Lisburn Road - 028 90 66 3030  
Ballyhackamore - 028 90 65 0000  
Lisburn - 028 92 66 1700  
[www.templetonrobinson.com](http://www.templetonrobinson.com)

**MONEY LAUNDERING REGULATIONS:** Intending purchasers will be asked to produce identification documentation and we would ask for your co-operation in order that there will be no delay in agreeing the sale.

These particulars do not constitute any part of an offer or contract. None of the statements contained in these particulars are to be relied on as statements or representations of fact and intending purchasers must satisfy themselves by inspection or otherwise to the correctness of each of the statements contained in these particulars. The Vendor does not make or give, neither Templeton Robinson, nor any person in its employment has any authority to make or give, any representation or warranty whatever in relation to this property. All dimensions are taken to nearest 3 inches.



52 Trevor Street,  
Holywood,  
BT18 9NA

## Property Features

A Renovated Mid Terrace in excellent order throughout

Lounge through to Dining Room

Luxury Kitchen with integrated appliances to include fridge freezer, and freestanding washing machine

Two Double Bedrooms

Luxury Bathroom with Bath and overhead Shower

Floored roofspace

Enclosed Courtyard to Rear

Phoenix Gas Heating

uPVC Double Glazing

Within walking distance to Holywood High Street

## Location:

Travelling from Church Road along Church View, take next left after Downshire Road.

## Property Comprises

### Ground Floor

#### HALLWAY:

LOUNGE / DINING: 20' 0" x 21' 3" (6.1m x 6.48m) Open Plan living and Dining area. Feature Cast Iron Fireplace. UPVC Double Glazing.

KITCHEN: 5' 8" x 16' 1" (1.73m x 4.9m) Modern Kitchen with Navy and White Shaker style Units and White and Grey Counter Top.

### First Floor

BEDROOM (1): 12' 3" x 10' 0" (3.73m x 3.05m) uPVC Windows, Radiator, Grey Carpet and Built in Storage.

BEDROOM (2): 7' 11" x 10' 10" (2.41m x 3.3m) uPVC Windows, Radiator and Grey Carpet.

BATHROOM: 5' 8" x 11' 4" (1.73m x 3.45m) Modern bathroom with Freestanding bath, overhead rainfall shower, WC, Sink and Heated Towel Rail .

### Second Floor

FLOORED STORAGE AREA: 12' 4" x 12' 5" (3.76m x 3.78m) Floored Area with storage under eaves. Velux Window. Radiator.

