



This beautifully presented first floor apartment is located in a very desirable, peaceful cul-de-sac location just a short stroll from Ballyhackamore and Belmont villages with its vast array of coffee shops, restaurants and amenities. Belfast City Centre is also easily accessible via car or local public transport routes.

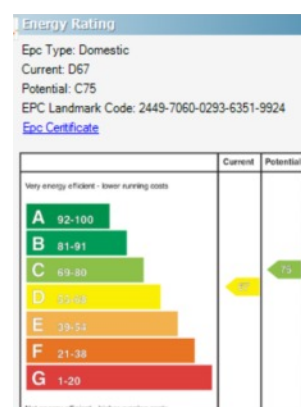
Immaculate throughout, the accommodation provides a sense of warmth and character the minute you come through the door. With two double bedrooms, large living and dining area, modern kitchen and a bathroom on offer, this apartment is sure to appeal to a wide range of purchasers.

Early viewing is highly recommended to appreciate all this fine home has to offer.

Offers Over £179,950

Apt 27b Eastleigh Dale,
Ballyhackamore,
Belfast,
BT4 3DT

Viewing by
appointment with
& through agent
028 9065 0000



- Immaculate first floor apartment in Ballyhackamore area
- Quiet cul-de-sac location
- Own front door
- Two double bedrooms
- Bright and spacious living room, open to dining
- Modern kitchen with range of appliances
- Luxury bathroom suite
- Excellent storage throughout
- Electric heating (smart boiler and heaters)
- Double glazing throughout
- Off street parking
- Walking distance to Ballyhackamore & Belmont Villages
- Excellent transport links to Belfast & Dundonald including Gilder stop close by



The Property Comprises:

First Floor

uPVC front door to . . .

ENTRANCE HALL: Storage/cloaks cupboard. Housing for electrics.

LIVING/DINING: 15' 6" x 15' 3" (4.72m x 4.65m) Wood effect flooring. Storage cupboard.



KITCHEN: 9' 8" x 7' 1" (2.95m x 2.17m) Modern range of high and low level units, work surfaces. Stainless steel sink unit with gold mixer tap. Underbench oven, four ring hob, extractor fan and splashback. Space for fridge freezer. Plumbed for washing machine. Spotlights. Wood effect flooring.



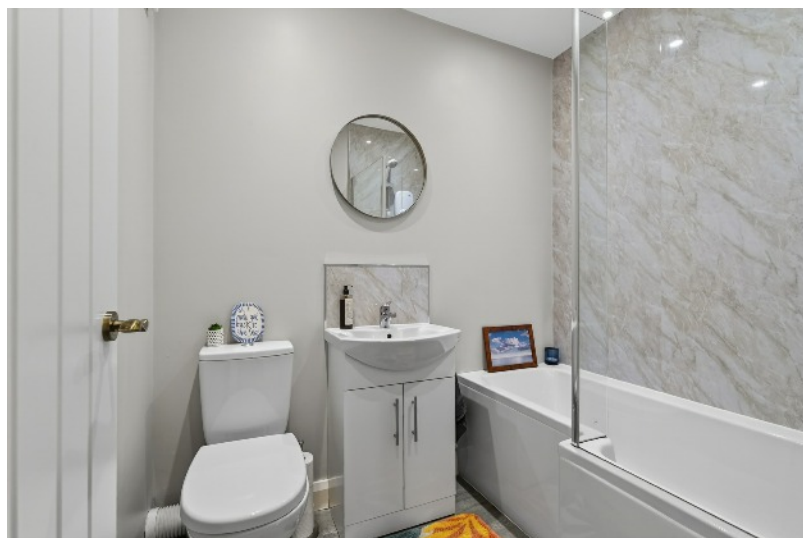
HALLWAY: Hotpress cupboard. Wood effect flooring.

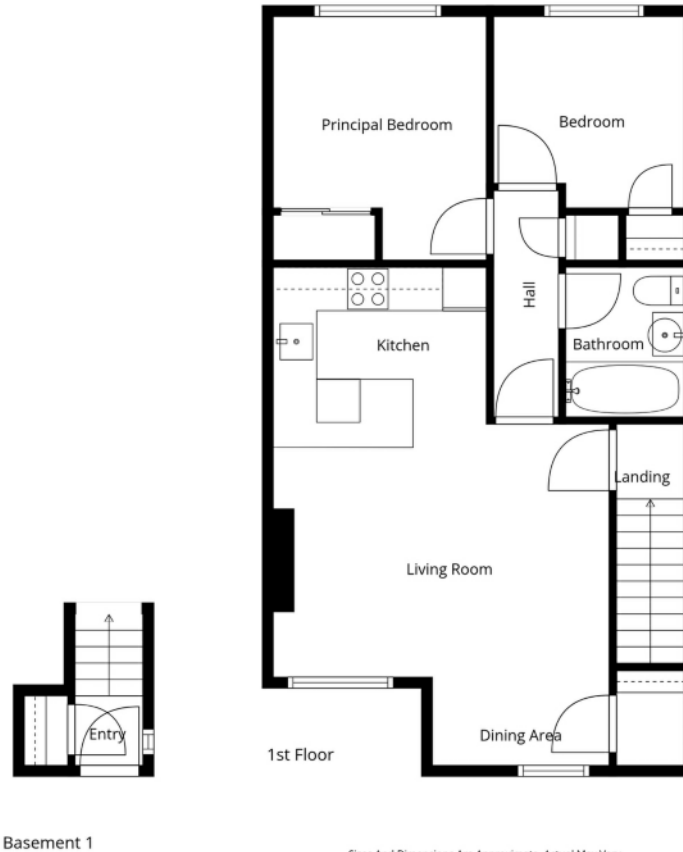
BEDROOM (1): 11' 1" x 9' 8" (3.37m x 2.94m) Wood effect flooring.

BEDROOM (2): 8' 8" x 8' 8" (2.64m x 2.64m) Wood effect flooring. Built-in storage cupboard.



BATHROOM: White suite comprising dual flush wc, vanity unit with ceramic sink, panelled bath with mixer tap, electric shower and glass screen, uPVC panelling, spotlights.





Outside

Off-street parking. Communal flower beds and mature shrubbery.

Location:

Travelling out of the city on the Upper Newtownards Road, go through Ballyhackamore Village and take the second left into Eastleigh Drive (before the Ballyhackamore Library). Eastleigh Dale is on the right hand side.

Ballyhackamore - 028 90 65 0000
 Lisburn Road - 028 90 66 3030
 North Down - 028 90 42 4747
 Lisburn - 028 92 66 1700

www.templetonrobinson.com

MONEY LAUNDERING REGULATIONS: Intending purchasers will be asked to produce identification documentation and we would ask for your co-operation in order that there will be no delay in agreeing the sale.

These particulars do not constitute any part of an offer or contract. None of the statements contained in these particulars are to be relied on as statements or representations of fact and intending purchasers must satisfy themselves by inspection or otherwise to the correctness of each of the statements contained in these particulars. The Vendor does not make or give, neither Templeton Robinson, nor any person in its employment has any authority to make or give, any representation or warranty whatever in relation to this property. All dimensions are taken to nearest 3 inches.