



Step into this beautifully presented home, blending contemporary style with everyday comfort. Complementary to this is the quiet yet extremely convenient cul de sac location only a short stroll from Ballyhackamore Village.

The ground floor features two separate reception rooms plus a sleek kitchen. Two double bedrooms and stylish wet room plus separate bathroom complete the home, perfect for first time buyers, downsizers and investors alike.

Enjoy a private decked courtyard to the rear. For those who don't drive, there is a Glider stop a stone's throw away.

Offers Over  
£182,500

12 Finvoy Street,  
Belfast,  
BT5 5DH

---

Viewing by  
appointment with  
& through agent  
028 9065 0000

- Stylish mid terrace home with leafy outlook
- Lounge with feature bay window
- Dining room with storage cupboard
- Modern kitchen with range of built in appliances
- Two double bedrooms
- Modern bathroom/Separate shower room
- Gas central heating/uPVC Double glazing
- Within walking distance of an array of restaurants, shops and the Comber Greenway
- Short commute to Belfast City Centre via the Glider network



The Property Comprises:

### Ground Floor

uPVC front door to:

ENTRANCE HALL: Laminate wood effect floor, cornice ceiling.

LOUNGE: 12' 6" x 10' 10" (3.81m x 3.3m) Built-in shelving and cupboard, cornice ceiling, picture rail.

DINING ROOM: 11' 6" x 10' 10" (3.51m x 3.3m) Cornice ceiling, under stairs storage cupboard.

KITCHEN: 13' 8" x 7' 2" (4.17m x 2.18m) Modern fitted kitchen with range of high and low level units, single drainer sink unit, induction hob, stainless steel extractor hood, plumbed for washing machine, integrated dishwasher, breakfast bar, uPVC glazed door to rear.



## First Floor Return

Access to roofspace.

BATHROOM: White suite comprising panelled bath with mixer tap, low flush wc, vanity sink unit, part tiled walls.

SHOWER ROOM: White suite comprising fully tiled shower cubicle with overhead rain head shower, telephone hand shower, part tiled walls, low voltage spotlights.



## First Floor

BEDROOM (1): 15' 0" x 10' 3" (4.57m x 3.12m)

Cornice ceiling.

BEDROOM (2): 11' 5" x 9' 2" (3.48m x 2.79m)

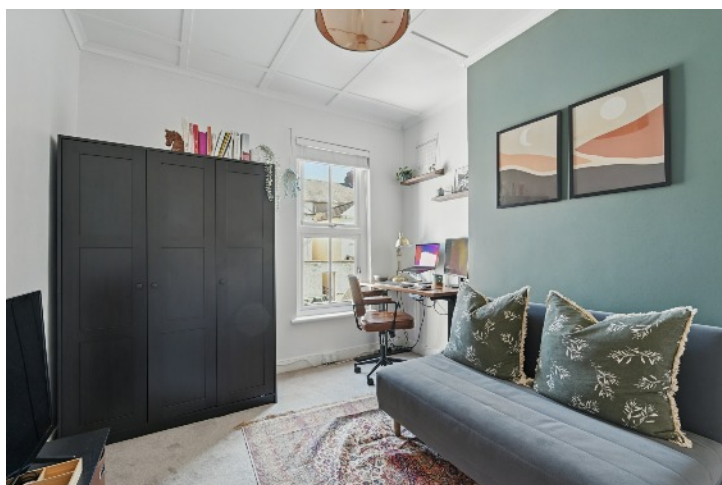
Cornice ceiling.



## Outside

FRONT: Gated forecourt.

REAR: Private and enclosed courtyard with composite decking.

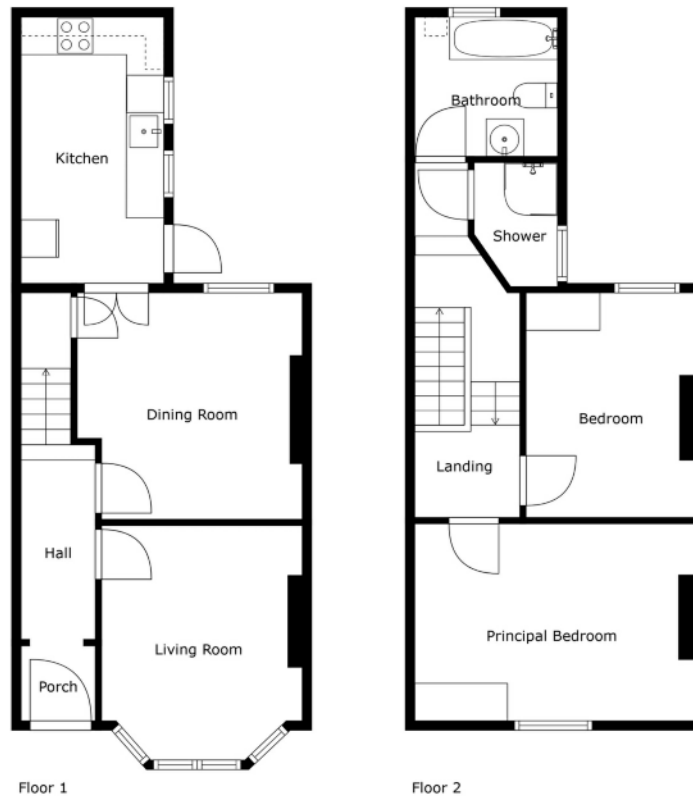


Telephone 028 9065 0000

[www.templetonrobinson.com](http://www.templetonrobinson.com)

Location:

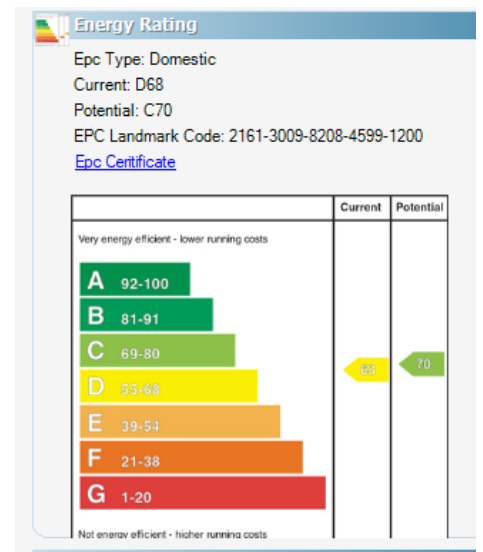
Heading out of Belfast on the Upper Newtownards Road, Finvoy Street is located on the right.



Sizes And Dimensions Are Approximate. Actual May Vary.

Ballyhackamore - 028 90 65 0000  
 Lisburn Road - 028 90 66 3030  
 North Down - 028 90 42 4747  
 Lisburn - 028 92 66 1700

www.templetonrobinson.com



These particulars do not constitute any part of an offer or contract. None of the statements contained in these particulars are to be relied on as statements or representations of fact and intending purchasers must satisfy themselves by inspection or otherwise to the correctness of each of the statements contained in these particulars. The Vendor does not make or give, neither Templeton Robinson, nor any person in its employment has any authority to make or give, any representation or warranty whatever in relation to this property. All dimensions are taken to nearest 3 inches.