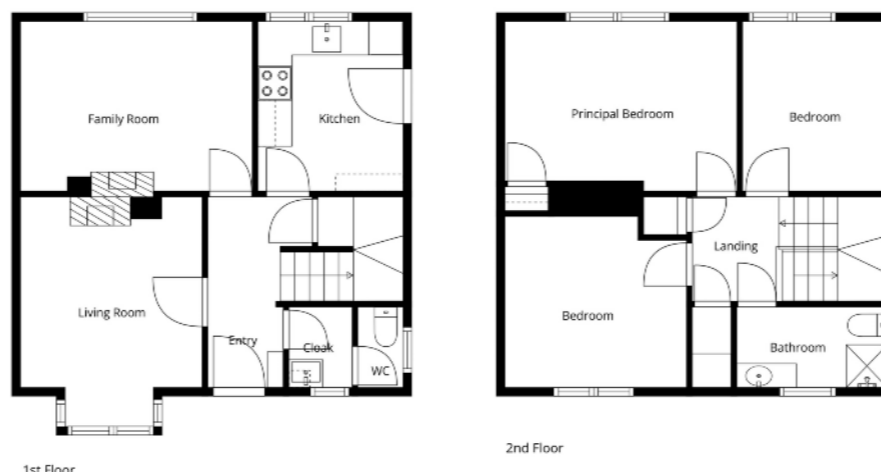


Outside

Garden area to front and enclosed rear with lawn and paved area.

TEMPLETON
ROBINSON

TEMPLETON
ROBINSON



Sizes And Dimensions Are Approximate. Actual May Vary.

Lisburn Road - 028 90 66 3030
 Ballyhackamore - 028 90 65 0000
 North Down - 028 90 42 4747
 Lisburn - 028 92 66 1700
www.templetonrobinson.com

MONEY LAUNDERING REGULATIONS: Intending purchasers will be asked to produce identification documentation and we would ask for your co-operation in order that there will be no delay in agreeing the sale

These particulars do not constitute any part of an offer or contract. None of the statements contained in these particulars are to be relied on as statements or representations of fact and intending purchasers must satisfy themselves by inspection or otherwise to the correctness of each of the statements contained in these particulars. The Vendor does not make or give, neither Templeton Robinson, nor any person in its employment has any authority to make or give, any representation or warranty whatever in relation to this property. All dimensions are taken to nearest 3 inches.



This well-located three-bedroom semi-detached home offers excellent potential for a range of buyers. Positioned just off Blacks Road, the property benefits from a convenient setting close to local amenities, transport links, and well-regarded schools.

The accommodation comprises a bright living room, a kitchen with dining area, and a convenient ground floor WC. Upstairs, there are three well-proportioned bedrooms and a family bathroom with shower.

While the property would benefit from modernisation, it presents a fantastic opportunity for purchasers to update and personalise to their own taste.

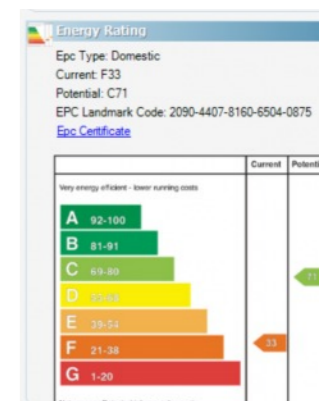
Externally, the home benefits from front and rear garden areas, along with uPVC double glazed windows and Economy 7 heating.

This property is ideally suited to both owner occupiers and investors seeking a home with strong potential in a popular residential area. Early viewing is highly recommended.

Offers Over
£120,000

12 Carnanmore Park,
Suffolk,
Belfast,
BT11 9LX

Viewing by
appointment with
& through agent
028 9066 3030



12 Carnanmore Park,
Suffolk,
Belfast, BT11 9LX

Property Features

- Excellent semi-detached property
- Two spacious & bright reception rooms
- Kitchen with outlook to rear garden
- Three well-proportioned bedrooms
- Downstairs W/C
- PVC front door and double glazed windows
- Garden areas to front and rear with driveway for ample parking
- Conveniently positioned near excellent schools, shops, and everyday facilities



Location:

Blacks Road from Motorway. Left hand side, approximately one mile.

Property Comprises

Ground Floor

ENTRANCE HALL: PVC front door. Under stairs storage cupboard.

DOWNSTAIRS W.C.: Low flush wc, wash hand basin.

LIVING ROOM: 12' 1" x 10' 6" (3.68m x 3.2m) Outlook to front garden. Tiled fireplace and hearth with electric fire.

DINING ROOM: 13' 8" x 9' 9" (4.17m x 2.97m) Outlook to rear garden.

KITCHEN: 9' 9" x 8' 4" (2.97m x 2.54m) High and low level units, space for oven and washing machine, stainless steel sink unit.

First Floor

BEDROOM (1): 13' 7" x 10' 0" (4.14m x 3.05m) Storage cupboard.

BEDROOM (2): 10' 6" x 9' 9" (3.2m x 2.97m)

BEDROOM (3): 10' 0" x 8' 4" (3.05m x 2.54m)

SHOWER ROOM: Low flush wc, vanity sink unit, walk-in shower with chrome shower, PVC wall tiles.

