



Attractive three bedroom cottage style holiday home situated in a bespoke holiday village on the North Antrim Coast. Conveniently positioned within easy reach by car or local transport of many famous tourist attractions.

The accommodation comprises; a living room, modern kitchen with dining area, ground floor bedroom and separate ground floor shower room. Upstairs are two bedrooms, principal with ensuite shower room, and a separate family bathroom.

Outside there is a charming courtyard aspect to the front and to the rear a south facing patio/garden.

We can highly recommend an internal inspection and are confident the charm and ambiance of the property and surrounds will have wide ranging appeal.

Offers Over
£275,000

House 9 ,
129 Whitepark Road,
Ballintoy,
BALLYCASTLE,
BT54 6ND

Viewing by
appointment
through agent
028 9066 3030



- Attractive 3 bedroom cottage style holiday home
- Prime location on the North Antrim Coast
- Easy reach to many of our world famous tourist attractions including The Giant's Causeway, Carrick-a-rede Rope Bridge, Whitepark Bay, Runkerry Strand, Ballintoy, Ballycastle, Bushmills & Portrush
- Living room & modern kitchen & dining area
- Ground floor bedroom & separate ground floor shower room
- 2 upstairs bedroom, principal with ensuite shower room & separate family bathroom
- Gas fired central heating
- Double glazed windows
- On site tennis court
- Superb views

The Property Comprises:

Ground Floor

ENTRANCE HALL:

LIVING ROOM: 13' 0" x 11' 10" (3.96m x 3.61m)

Wooden floor, feature fireplace.



MODERN FITTED KITCHEN: 9' 10" x 8' 7" (3m x 2.62m) Range of modern high and low level units, single drainer stainless steel sink unit, built-in four ring hob with extractor fan above, built-in oven, excellent work surfaces. Open plan to . . .

DINING AREA: 8' 9" x 8' 7" (2.67m x 2.62m) Wooden floor, door to rear patio and garden area.



REAR HALLWAY/CLOAKROOM: 7' 7" x 6' 3" (2.31m x 1.91m) Access to ground floor shower room with shower cubicle, low flush wc and wash hand basin.

BEDROOM (3): 11' 3" x 11' 2" (3.43m x 3.4m)



First Floor

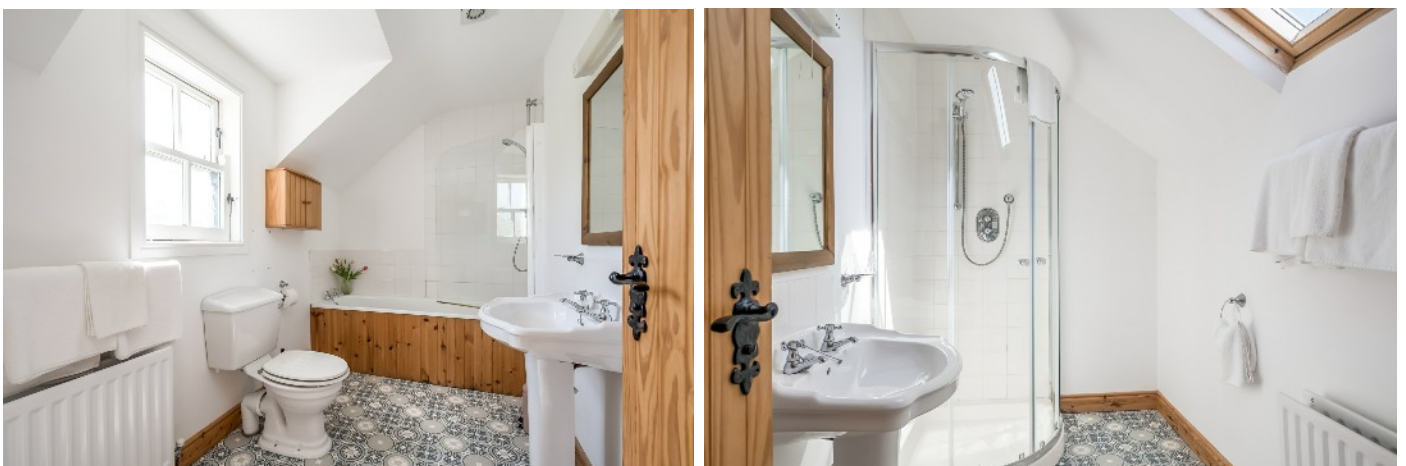
LANDING:

BEDROOM (1): 17' 5" x 11' 10" (5.31m x 3.61m)

ENSUITE SHOWER ROOM: Comprising shower cubicle, pedestal wash hand basin, low flush wc.



BATHROOM: Wood panelled bath, pedestal wash hand basin, low flush wc.

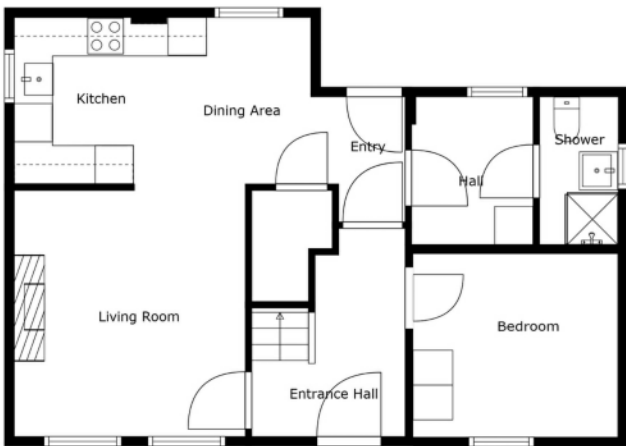


Outside

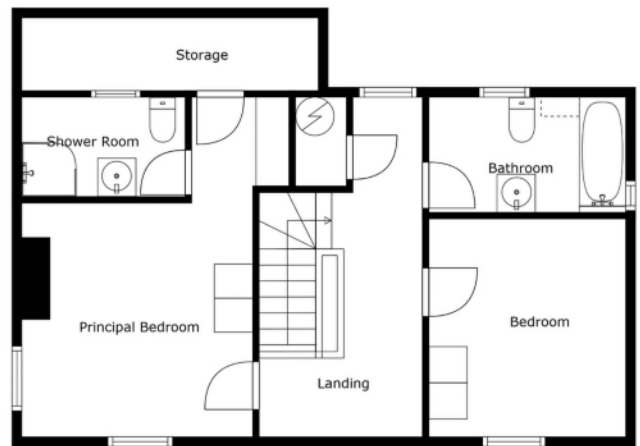
Delightful courtyard aspect to the front of the property. Enclosed patio/garden to the south facing rear.





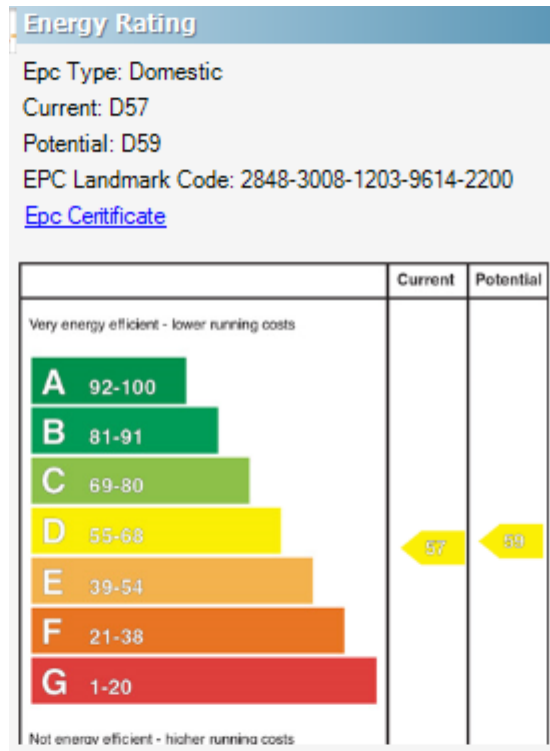


Floor 1



Floor 2

Sizes And Dimensions Are Approximate. Actual May Vary.



Location:

Heading from Whitepark Bay to Ballintoy this holiday village is on the left hand side just before the turn to Ballintoy harbour.

Lisburn Road - 028 90 66 3030
 Ballyhackamore - 028 90 65 0000
 Lisburn - 028 92 66 1700
 North Down - 028 90 42 4747
www.templetonrobinson.com

These particulars do not constitute any part of an offer or contract. None of the statements contained in these particulars are to be relied on as statements or representations of fact and intending purchasers must satisfy themselves by inspection or otherwise to the correctness of each of the statements contained in these particulars. The Vendor does not make or give, neither Templeton Robinson, nor any person in its employment has any authority to make or give, any representation or warranty whatever in relation to this property. All dimensions are taken to nearest 3 inches.

