

Offers Over £200,000



**For Sale On behalf of Cathy McLean, Trustee in the
Bankruptcy of Robert Mawhinney, KPMG Ireland**

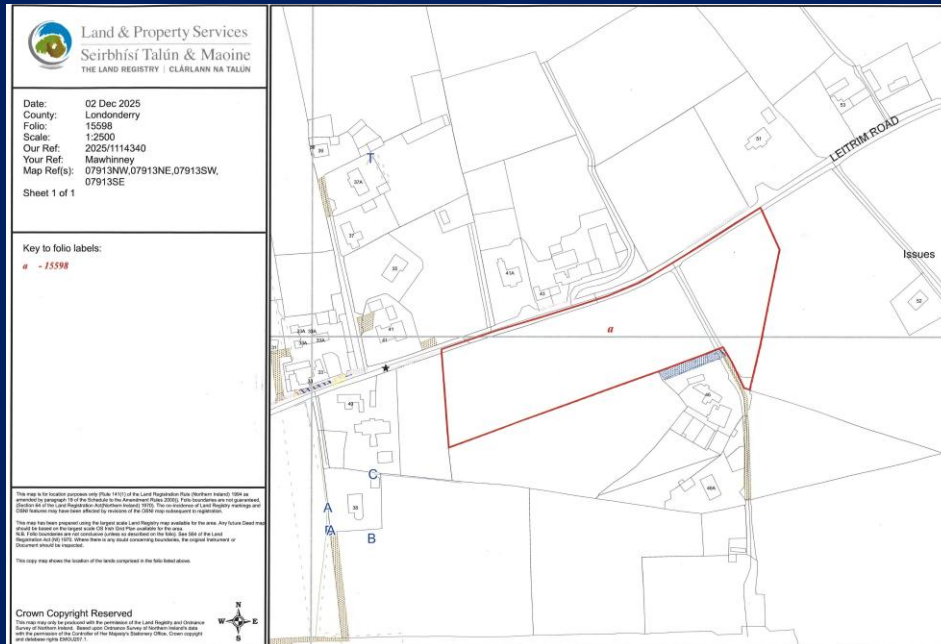
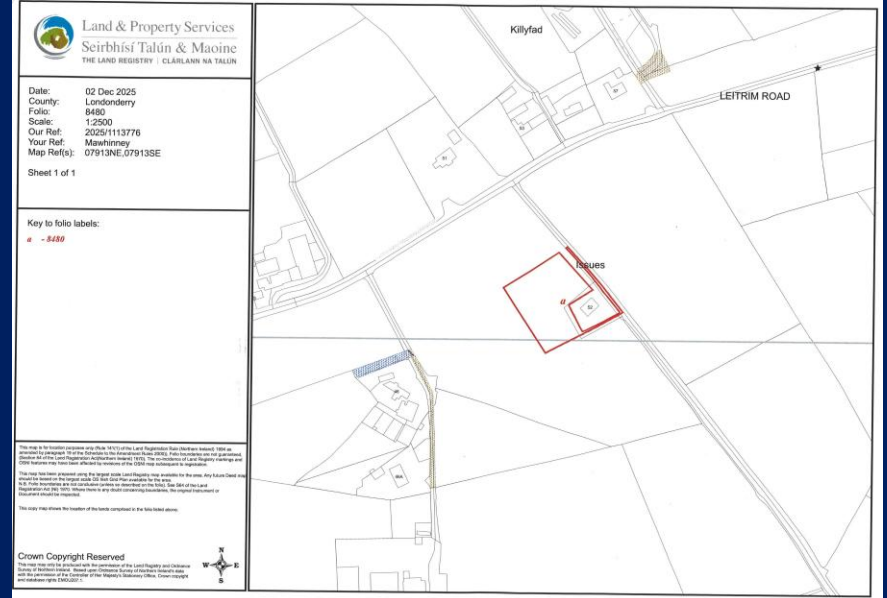
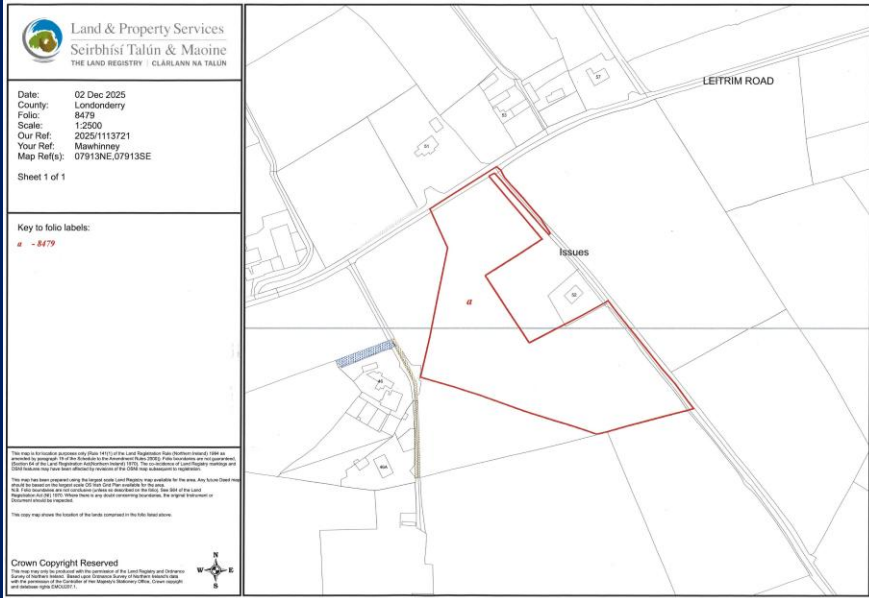


Agricultural Lands situated on the Leitrim Road, Castledawson

9 Dunmore Street, Coleraine, BT52 1EL
T: (028) 7034 3677
E: info@bensonsni.com
W: www.bensonsni.com

- c. 9.9 acres of good quality arable land
- Frontage on to the Leitrim Road
- Lands held under folios 8479, 8480 & 15598

MAPS FOR IDENTIFICATION PURPOSES ONLY





T: (028) 7034 3677 E: info@bensonsni.com W:
www.bensonsni.com

Agent:

Bensons
9 Dunmore Street, Coleraine
Tel: (028) 7034 3677
www.bensonsni.com

•Every care has been taken with the preparation of these particulars, but complete accuracy cannot be guaranteed. In all cases, buyers should verify matters for themselves.

If there is any point, which is of importance to you, please obtain professional assistance, or let us know and we will verify it for you.

•Where property alterations have been undertaken buyers should check that relevant permissions have been obtained.

•These particulars do not constitute a contract or part of a contract.

•All measurements quoted are approximate.

•Photographs are reproduced for general information and it cannot be inferred that any item shown is included in the sale.