

27 Willowbank Gardens , Belfast, BT15 5AH

Offers Over £175,000

Substantial Period Town House Beautifully Presented And Ready to Move Into!

Holding a prime position within this most sought after and convenient location moments from the many amenities offered by both the Cavehill and Antrim Roads this most attractive red brick period terrace will have immediate appeal. The well presented interior comprises 4 bedrooms, lounge into bay, living room, fitted kitchen and classic white bathroom suite. The dwelling further offers uPvc double glazed windows, oil fired central heating and extensive use of wood laminate flooring and has been maintained and updated to a good standard in past years. Conveniently positioned to the many excellent local amenities with leading schools, parks and public transport all close by with the Cathedral Quarter and the New University campus only minutes away makes Early Viewing highly recommended.

Energy Efficiency Rating		Current	Potential
Very energy efficient - lower running costs			
(92 plus) A			
(81-91) B			
(69-80) C			
(55-68) D			
(39-54) E			
(21-38) F			
(1-20) G			
Not energy efficient - higher running costs			
Northern Ireland		EU Directive 2002/91/EC	

27 Willowbank Gardens

, Belfast, BT15 5AH



- Substantial Period Town House
- Classic White Bathroom Suite
- Extensive Use Of Wood Laminate Flooring
- Moments From Queen Victoria Park
- 4 Bedrooms 2 Reception Rooms
- Upvc Double Glazed Windows
- Many Period Features
- Fitted Kitchen
- Oil Fired Central Heating
- Most Sought After And Convenient Location

Entrance Porch

Hardwood entrance door, ceramic tiled floor.

Entrance Hall

Vestibule door, wood laminate floor, cornice ceiling, double panelled radiator.

Lounge

13'10" x 10'5" (4.22 x 3.20)

Into bay, wood laminate floor, picture rail, cornice ceiling, double panelled radiator.

Living Room

11'8" x 10'9" (3.57 x 3.28)

Wood laminate floor, double panelled radiator.

Kitchen

13'1" x 6'8" (4.01 x 2.05)

Single drainer stainless steel sink unit, extensive range of high and low level

units, formica worktops, cooker space, stainless steel extractor fan, fridge/freezer space, plumbed for washing machine, partly tiled walls, ceramic tiled floor, under stairs storage, double panelled radiator, uPvc door to rear.

First Floor

Landing, cornice ceiling.

Bathroom

Classic white bathroom suite comprising panelled bath, shower screen, electric shower, pedestal wash hand basin, low flush wc, partly pvc panelled walls, double panelled radiator.

Bedroom

10'10" x 9'1" (3.32 x 2.78)

Wood laminate floor, cornice ceiling, panelled radiator.

Bedroom

14'7" x 15'1" (4.46 x 4.61)

Into bay, wood laminate floor, picture rail, cornice ceiling, ceiling rose, double panelled radiator.

Second Floor

Landing.

Bedroom

11'1" x 8'0" (3.38 x 2.45)

Wood laminate floor, panelled radiator.

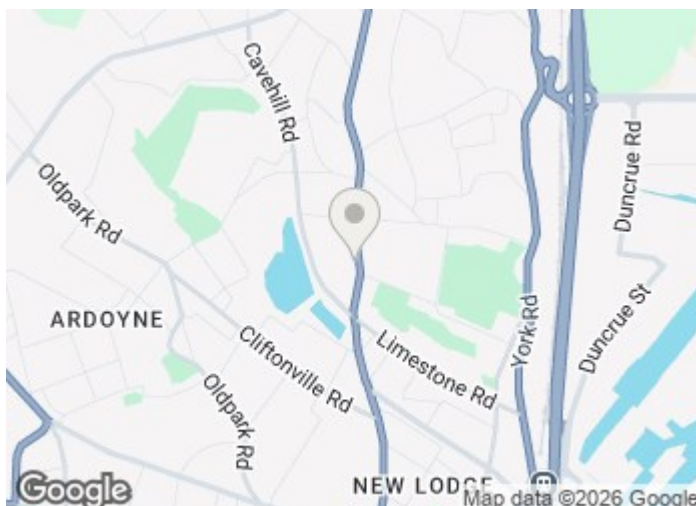
Bedroom

11'5" x 13'8" (3.50 x 4.19)

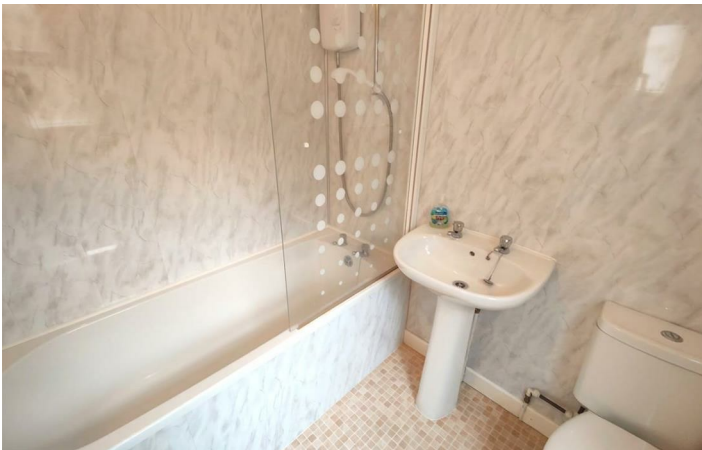
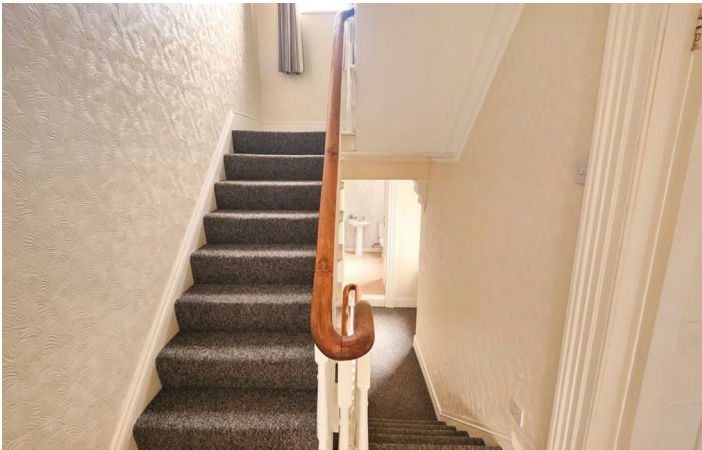
Wood laminate floor, panelled radiator.

Outside

Forecourt to front with flowerbeds, hard landscaped enclosed rear yard, outside tap, covered storage, outside low flush wc, boiler house, pvc oil tank.



Directions



Floor Plan

These particulars, whilst believed to be accurate are set out as a general outline only for guidance and do not constitute any part of an offer or contract. Intending purchasers should not rely on them as statements of representation of fact, but must satisfy themselves by inspection or otherwise as to their accuracy. No person in this firm's employment has the authority to make or give any representation or warranty in respect of the property.

