



ULSTER PROPERTY SALES

UPS

CAVEHILL BRANCH

194 Cavehill Road, Belfast, BT15 5EX

028 9072 9270

cavehill@ulsterproperty-sales.co.uk

NETWORK STRENGTH - LOCAL KNOWLEDGE



53 Wheatfield Gardens , Belfast, BT14 7HW

Offers Around £129,950

Unique Opportunity To Purchase An Attractive Red Brick Semi Detached Property Within This Highly Regarded Location.

A handsome red brick semi detached villa holding a slightly elevated position within this most popular section of Wheatfield Gardens. This unique opportunity affords those wishing to create the perfect family home. The interior comprises 3 bedrooms, spacious lounge, fitted kitchen with dining area and classic white bathroom suite to ground floor. The dwelling further offers double glazed windows, gas central heating, extensive large private gardens front and rear combines with the perfect location to make this an opportunity not to be missed.

Energy Efficiency Rating		
	Current	Potential
Very energy efficient - lower running costs		
(92 plus) A		
(81-91) B		
(69-80) C		
(55-68) D		
(39-54) E		
(21-38) F		
(1-20) G		
Not energy efficient - higher running costs		
Northern Ireland		EU Directive 2002/91/EC

53 Wheatfield Gardens

, Belfast, BT14 7HW



- Attractive Red Brick Semi Detached
- 3 Bedrooms
- Spacious Lounge
- Fitted Kitchen With Dining Area
- Classic White Bathroom Suite
- Double Glazed Windows
- Gas Central Heating
- Perfect Family Home
- Highly Regarded Location

Entrance Hall

Upvc double glazed entrance door, wood effect vinyl flooring

Lounge

10'9" x 11'6" (3.30 x 3.52)

Attractive fireplace, double panelled radiator

Kitchen

10'5" x 11'8" (3.19 x 3.56)

Bowl and 1/2 drainer sink unit, range of high and low level units, formica worktops, cooker space, fridge/freezer space, plumbed for washing machine, partly tiled walls, upvc door to rear

Bathroom

Classic white bathroom suite comprising panelled bath, pedestal wash hand basin, low flush wc, fully tiled walls, panelled radiator

First Floor

Landing, built-in storage, wall mounted gas boiler

Bedroom

11'2" x 9'5" (3.42 x 2.89)

Built-in storage, double panelled radiator

Bedroom

8'3" x 11'3" (2.52 x 3.43)

Panelled radiator

Bedroom

7'10" x 8'5" (2.41 x 2.58)

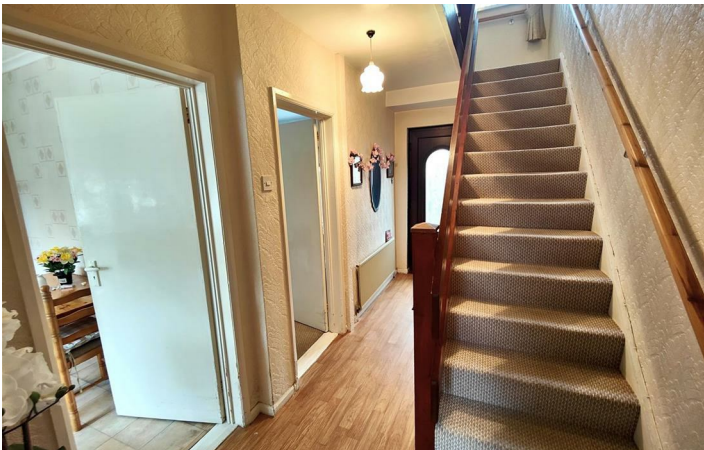
Panelled radiator

Outside

Large extensive front and rear gardens in mature lawn & hedging, outside light



Directions



Floor Plan

These particulars, whilst believed to be accurate are set out as a general outline only for guidance and do not constitute any part of an offer or contract. Intending purchasers should not rely on them as statements of representation of fact, but must satisfy themselves by inspection or otherwise as to their accuracy. No person in this firms employment has the authority to make or give any representation or warranty in respect of the property.

