



27 BIRCH DRIVE

Bangor BT19 1RY

Offers Around

£180,000



HOUSE - SEMI-DETACHED
Add Text Here

| 3 | 1 | 3

KEY FEATURES

Add Text Here



ROOM DETAILS

ENTRANCE

Entrance Hall

GROUND FLOOR

Reception Hall

Lounge

15'1 x 12'3

Dining Room

10'8 x 9'3

Garden Room

10'8 x 10'6

Kitchen

13'4 x 7'11

FIRST FLOOR

Landing

Bedroom One

12'0 x 9'7

Bedroom Two

11'0 x 8'1

Bedroom Three

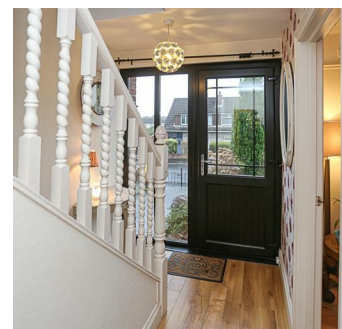
11'0 x 6'10

Bathroom

7'8 x 6'6

OUTSIDE

*Gardens and
Driveway Parking*



DIRECTIONS

Travelling on the Rathgael Road take a left hand turn onto Birch Drive, number 27 is located on the left hand side.



THE LOCAL AREA

A vibrant seaside town on Belfast Lough, Bangor offers the perfect mix of coastal living and community warmth. Its lively marina, cafés, and shops make it a favourite spot for locals and visitors alike. Families love the great schools, parks, and outdoor spaces, from Pickie Fun Park to Ballyholme Beach. Regular trains and road links provide an easy commute to Belfast and beyond. With stunning sea views and a relaxed pace of life, Bangor is a wonderful place to call home.



Energy Efficiency Rating		
	Current	Potential
Very energy efficient - lower running costs		
(92 plus) A		
(81-91) B		
(69-80) C		
(55-68) D		
(39-54) E	55	62
(21-38) F		
(1-20) G		
Not energy efficient - higher running costs		
Northern Ireland		EU Directive 2002/91/EC

OUR BRANCHES

B' FAST (028) 9065 3333 H'WOOD (028) 9042 8888 BANGOR (028) 9131 3833 D'DEE (028) 9188 8881 COMBER (028) 9187 1212

property@johnminnis.co.uk

JOHNMINNIS.CO.UK

