



## 5 RADEMON COURT

Downpatrick BT30 9NS

---

*Offers Over*  
**£270,000**

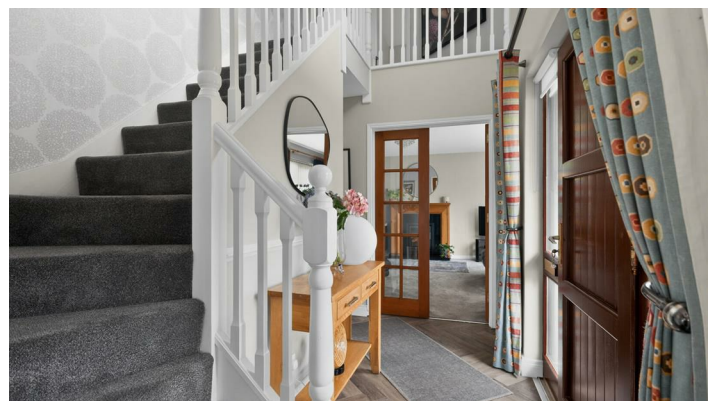


HOUSE -  
DETACHED  
Add Text Here

| 4  | 2  | 2 

## KEY FEATURES

Add Text Here



## ROOM DETAILS

### *Entrance Hallway*

4'6" x 15'4"

### *Bedroom Four*

13'9" x 11'4"

### *WC*

4'2" x 4'5"

### *Family Lounge*

16'4" x 13'9"

### *Kitchen / Dining*

17'4" x 10'10"

### *Dining Room / Family Snug*

8'5" x 13'9"

### *Stairs to 1st Floor / Landing*

### *Principal Bedroom*

14'4" x 10'11"

### *Ensuite*

4'6" x 7'12"

### *Bedroom Three*

7'10" x 13'8"

### *Family Bathroom*

6'4" x 10'2"

### *Bedroom Two*

10'3" x 10'2"

### *Utility Room*

7'7" x 11'4"

### *Outside*



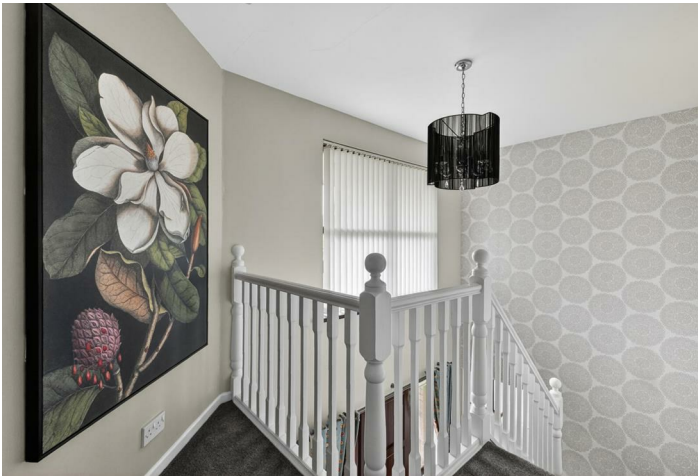
## DIRECTIONS

From Comber Square, turn left onto High Street, at the roundabout in Ballygowan continue straight towards Saintfield. At the lights in Saintfield, continue straight, until you reach the Euro Spar Garage then take the next left onto Rademon Court, number 5 will be on your right hand side.



## THE LOCAL AREA

Crossgar is a thriving village in County Down, approximately 15 miles south of Belfast and conveniently located between Saintfield and Downpatrick. Set within a picturesque rural area, the village offers a range of local amenities, schools, shops, and recreational facilities, while benefiting from excellent transport links.



Energy Efficiency Rating		Current	Potential
Very energy efficient - lower running costs			
(92 plus) A			
(81-91) B			
(69-80) C			
(55-68) D			
(39-54) E			
(21-38) F			
(1-20) G			
Not energy efficient - higher running costs			
		70	81
Northern Ireland		EU Directive 2002/91/EC	

## OUR BRANCHES

B' FAST (028) 9065 3333 H'WOOD (028) 9042 8888 BANGOR (028) 9131 3833 D'DEE (028) 9188 8881 COMBER (028) 9187 1212

property@johnminnis.co.uk

JOHNMINNIS.CO.UK     

