



## SITE 488 ENLER VILLAGE

Comber BT23 5ZW

---

*Fixed Asking Price*

**£242,000**



HOUSE - SEMI-DETACHED  
Add Text Here

| 3  | 2  | 1 

KEY FEATURES

Add Text Here



## ROOM DETAILS

**ENTRANCE  
HALL:**

**ENSUITE**  
(7'7" x 3'3")

**LOUNGE:**  
(15'7" x 9'11")

**BEDROOM (2)**  
(11'11" x 9'11")

**KITCHEN/DINING**  
(17'3" x 11'6")

**BEDROOM (3):**  
(8'1" x 7'11")

**SEPARATE WC:**  
(6'7" x 3'1")

**BATHROOM**  
(7'8" x 7'0")

**MASTER  
BEDROOM**  
(11'6" x 9'11")

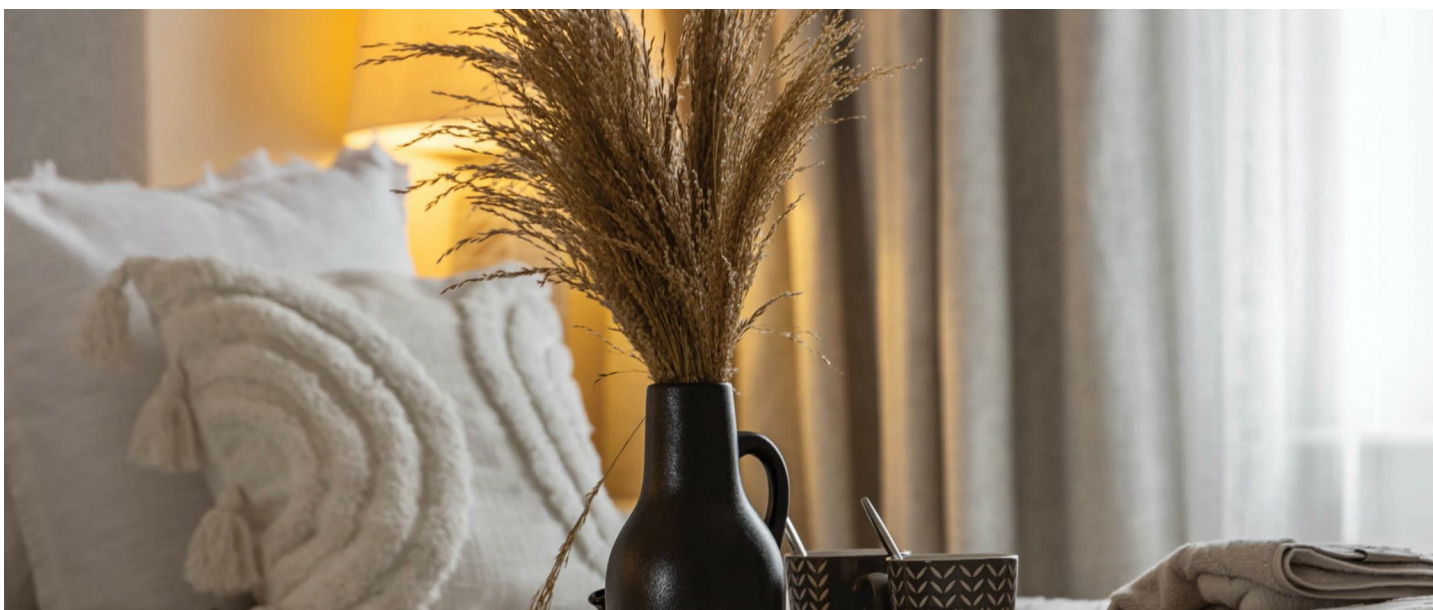
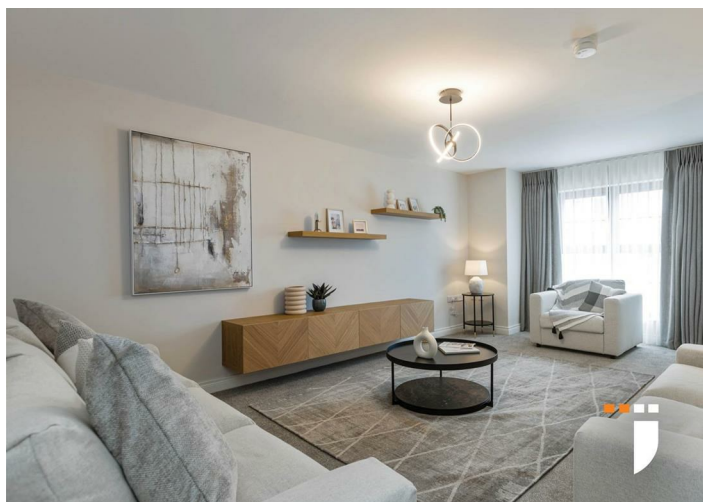
**ENLER  
VILLAGE**  
COMBER

**HAGAN**  
CREATING  
HOMES  
SINCE 1988

@HaganHomes  
www.haganhomes.co.uk

 **JOHNMINNIS**

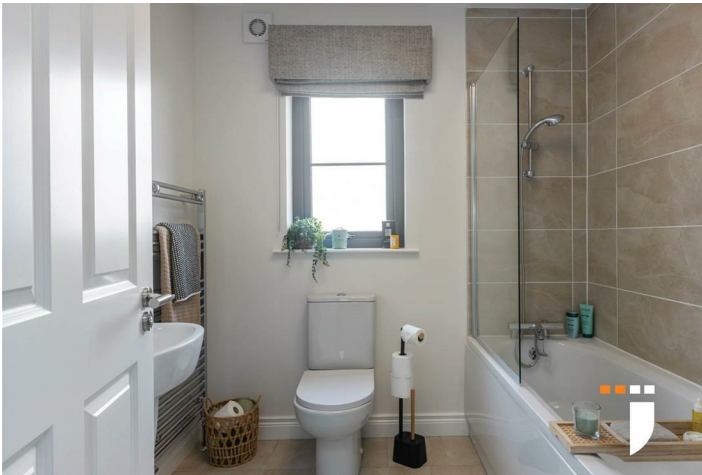
40 The Square, Comber  
Telephone 028 9187 1212  
www.johnminnis.co.uk





DIRECTIONS

Travelling from Comber Square towards Newtownards, Enler Village is located at the 2nd Exit on the roundabout.



THE LOCAL AREA

Quaint Comber: The ‘home of great taste’ and famous potatoes! Steeped in rich history, spectacular scenery and fine cuisine, Comber is a number one place to lay your roots.

Get on your bike along the Comber Greenway, seven traffic-free miles of the National Cycle Network, taking in Stormont Estate, Scrabo Tower and more



Energy Efficiency Rating		
	Current	Potential
Very energy efficient - lower running costs		
(92 plus) A		
(81-91) B		
(69-80) C		
(55-68) D		
(39-54) E		
(21-38) F		
(1-20) G		
Not energy efficient - higher running costs		
Northern Ireland		EU Directive 2002/91/EC

OUR BRANCHES

B' FAST (028) 9065 3333 H'WOOD (028) 9042 8888 BANGOR (028) 9131 3833 D'DEE (028) 9188 8881 COMBER (028) 9187 1212

property@johnminnis.co.uk JOHNMINNIS.CO.UK



These particulars do not constitute any part of an offer or contract. None of the statements contained in these particulars are to be relied on as statements or representations of fact and intending purchasers must satisfy themselves by inspection or otherwise to the correctness of each of the statements contained in these particulars. The vendor does not make or give, neither John Minnis, nor any person in its employment any authority to make or give, any representation or warranty whatever in relation to the property. All dimensions are taken to the nearest 3 inches.