



## 43A EAST LINK

Holywood BT18 9PQ

---

*Offers Around*

**£89,000**



APARTMENT | 1  | 1  | 1 

Add Text Here

KEY FEATURES

Add Text Here



## ROOM DETAILS

*ENTRANCE*

*Entrance Hall*

*GROUND FLOOR*

*Reception Hall*

*Lounge*

(12'6" x 12'4")

*Kitchen*

(12'6" x 8'0")

*Bedroom One*

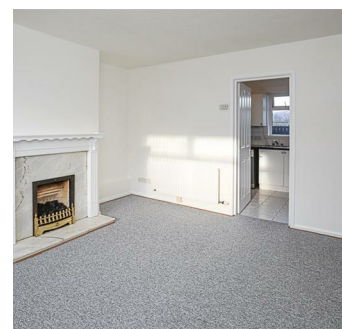
(15'6" x 9'3")

*Shower Room*

(8'11" x 8'0")

*OUTSIDE*

*Rear Garden*





## DIRECTIONS

Travelling from the Maypole in Holywood along the High Street, in the direction of Belfast, turn left into Abbey Road after Sullivan Upper School and take the first right along Abbey Ring. East Link is located on the third street on your left hand side.



## THE LOCAL AREA

A welcoming seaside town just five miles from Belfast, full of charm and community spirit. Stroll along the main street's cafés, boutiques, and family-run restaurants. With great schools, coastal paths, and nearby golf clubs, there's something for everyone. Beautiful homes, sea views, and a relaxed pace make Holywood a wonderful place to live.



Energy Efficiency Rating		
	Current	Potential
Very energy efficient - lower running costs		
(92 plus) A		
(81-91) B		
(69-80) C		
(55-68) D		
(39-54) E		
(21-38) F		
(1-20) G		
Not energy efficient - higher running costs		
	68	73
Northern Ireland		EU Directive 2002/91/EC

## OUR BRANCHES

B' FAST (028) 9065 3333   H'WOOD (028) 9042 8888   BANGOR (028) 9131 3833   D'DEE (028) 9188 8881   COMBER (028) 9187 1212

property@johnminnis.co.uk

JOHNMINNIS.CO.UK       



These particulars do not constitute any part of an offer or contract. None of the statements contained in these particulars are to be relied on as statements or representations of fact and intending purchasers must satisfy themselves by inspection or otherwise to the correctness of each of the statements contained in these particulars. The vendor does not make or give, neither John Minnis, nor any person in its employment any authority to make or give, any representation or warranty whatever in relation to the property. All dimensions are taken to the nearest 3 inches.