



17 ORANGEFIELD ROAD

BELFAST BT5 6DB

---

*Offers Over*

**£210,000**



HOUSE - SEMI-  
DETACHED  
Add Text Here

| 3  | 1  | 2 

KEY FEATURES

Add Text Here





## ROOM DETAILS

### ENTRANCE

### GROUND FLOOR

Reception Hall:

Lounge:

12'7" x 11'5"

Dining Room:

12'0" x 10'9"

Kitchen:

8'8" x 7'2"

Stairs to First Floor

Landing:

### FIRST FLOOR

Roofspace

Bathroom:

Bedroom One:

12'7" x 10'9"

Bedroom Two:

12'0" x 10'9"

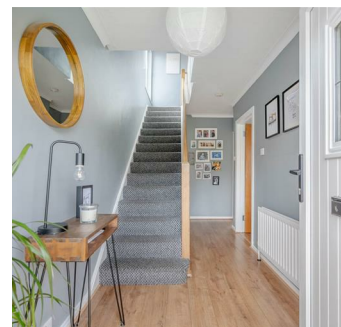
Bedroom Three:

9'4" x 7'2"

### OUTSIDE

Outside:

Detached Garage:



DIRECTIONS

Travelling along North Road in the direction of Ballyhackmore, Orangefield Road is on your right-hand side, just before the bridge. No 17 is on the right-hand side.



THE LOCAL AREA

East Belfast is a dynamic part of the city, full of beautiful residential areas and a wide variety of amenities that make it a wonderful place to live. Bustling villages, beautiful parks, and fantastic local schools are just a few of the reasons why so many wish to call it home



Energy Efficiency Rating		
	Current	Potential
Very energy efficient - lower running costs		
(92 plus) A		
(81-91) B		
(69-80) C		
(55-68) D		
(39-54) E		
(21-38) F		
(1-20) G		
Not energy efficient - higher running costs		
	67	79
Northern Ireland		EU Directive 2002/91/EC

OUR BRANCHES

B' FAST (028) 9065 3333 H'WOOD (028) 9042 8888 BANGOR (028) 9131 3833 D'DEE (028) 9188 8881 COMBER (028) 9187 1212

property@johnminnis.co.uk      JOHNMINNIS.CO.UK      f    @    X    in    y



These particulars do not constitute any part of an offer or contract. None of the statements contained in these particulars are to be relied on as statements or representations of fact and intending purchasers must satisfy themselves by inspection or otherwise to the correctness of each of the statements contained in these particulars. The vendor does not make or give, neither John Minnis, nor any person in its employment any authority to make or give, any representation or warranty whatever in relation to the property. All dimensions are taken to the nearest 3 inches.