



14b Crossreagh Drive, Newtownabbey, BT37 9DY

£595 Per Month



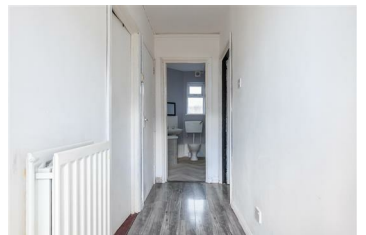
Well presented, one bedroom, own door, ground floor apartment with garden to front and communal courtyard area to the rear, conveniently located within the popular Rathcoole area of Newtownabbey.

The property comprises private entrance hall, spacious lounge, modern fitted kitchen, one well proportioned bedroom, and recently refurbished bathroom with three piece suite.

Externally, the property enjoys garden to front finished in lawn and communal courtyard area to the rear.

Other attributes include gas fired central heating and PVC double glazing.

Early viewing highly recommended to avoid disappointment.



INVESTORS IN PEOPLE
We invest in people Gold

PRS Property Redress Scheme

Proudly sponsoring



WE ARE MACMILLAN
CANCER SUPPORT

Awards

