



7B Ardmillan Drive, Newtownabbey, BT37 9AZ

£650 Per Month



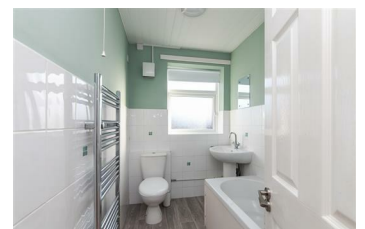
Immaculately presented, two bedroom, ground floor apartment with front garden finished in lawn and enclosed private patio garden to the rear, conveniently located off Green End, Rathcoole, Newtownabbey.

The property comprises communal entrance hall, private entrance hall with storage cupboard, lounge, modern fitted kitchen, two well proportioned bedrooms, and bathroom with white three piece suite.

Externally, the property benefits from front garden finished in lawn, communal parking area, and enclosed, private patio garden to the rear,

Other attributes include gas fired central heating, PVC double glazing and convenient location.

Early viewing highly recommended.



INVESTORS IN PEOPLE
We invest in people Gold

PRS Property Redress Scheme

Proudly sponsoring

 **Northern
Ireland
Children's
Hospice**

Awards

Telegraph
PROPERTY AWARDS 2018
in partnership with

Telegraph
PROPERTY AWARDS 2019
in partnership with

Shortlisted
TheNegotiator
Awards 2018

Shortlisted
TheNegotiator
Awards 2019

THE INVESTORS IN PEOPLE
AWARDS 2019
Finalist

TheNegotiator
REGIONAL AGENCY
OF THE YEAR
NORTHERN IRELAND
GOLD

**WE ARE
MACMILLAN.**
CANCER SUPPORT