



Agricultural Land Adj. To, 160 Ballymena Road, Doagh, Ballyclare, BT20 0TN

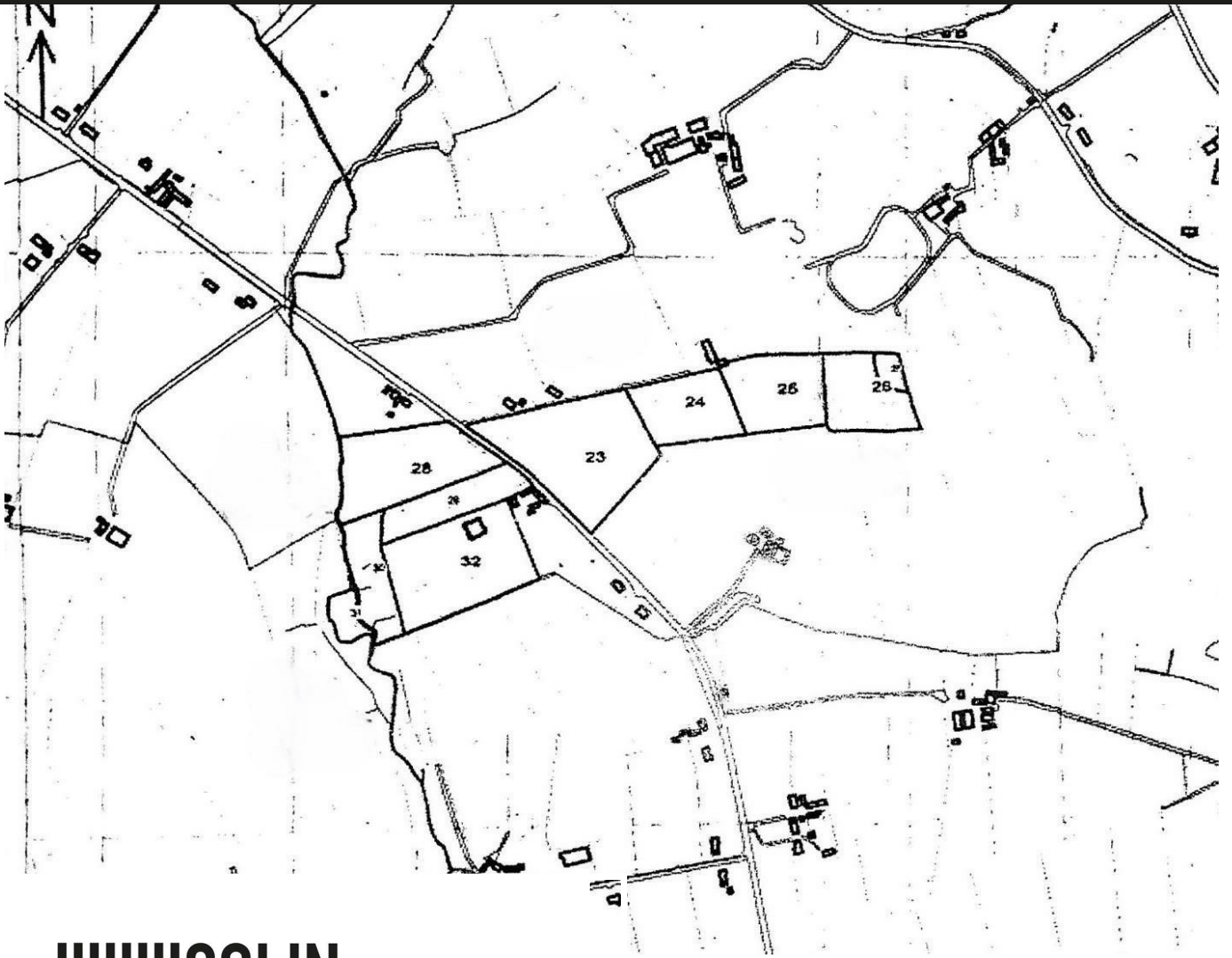
- c.31 Acres of Agricultural Land
- c.16.20 Acres Opposite No.160 Ballymena Road
- Conveniently Positioned Near Ballyclare, Antrim and Ballymena
- Further Information Available By Request
- c.14.80 Acres Adjacent to No.160 Ballymena Road
- Building Site Available By Separate Negotiation
- Close To M2 Access For Belfast And The North
- Early Interest Recommended

Offers Over **£395,000**

EPC Rating



160 Ballymena Road, Ballyclare, BT39 0TN



**COLIN
GRAHAM
RESIDENTIAL**

...WE SELL LAND

PROPERTY DESCRIPTION

[REDACTED]

[REDACTED]



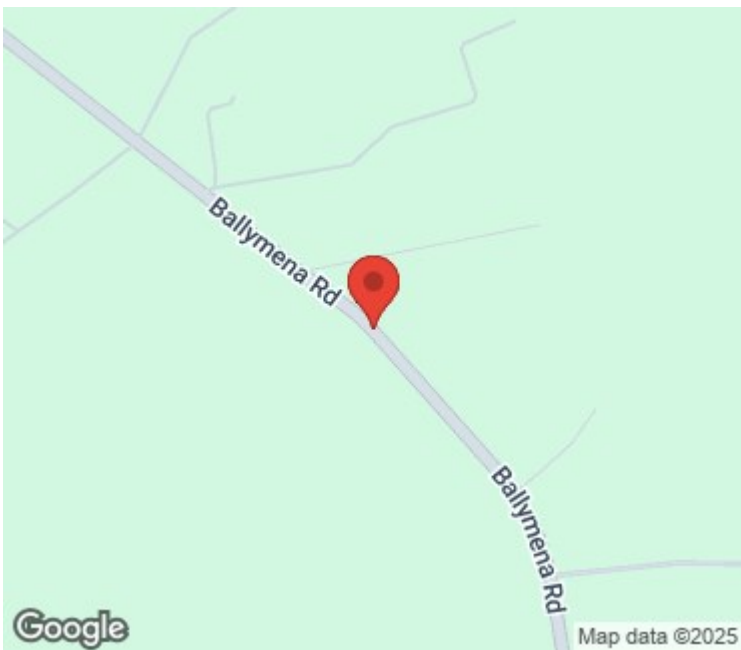
c.31 acres of agricultural land, situated off Ballymena Road, Doagh.

c.14.80 acres (fields 28-32 (less building site and entrance lane for same)) are adjacent to No.160 Ballymena Road, with the other c.16.20 acres (fields 23-27) opposite No.160 Ballymena Road. Both parcels of land enjoy partial road frontage and direct access onto the Ballymena Road.

The building site is being sold by way of separate negotiation... further information available upon request.

The land is conveniently positioned a short distance from Ballyclare, Antrim, Ballymena, and M2 access to Belfast and The North.

Early interest highly recommended.



Energy Efficiency Rating		
	Current	Potential
Very energy efficient - lower running costs		
(92 plus) A		
(81-91) B		
(69-80) C		
(55-68) D		
(39-54) E		
(21-38) F		
(1-20) G		
Not energy efficient - higher running costs		
Northern Ireland	EU Directive 2002/91/EC	

Agents Note: Whilst every care has been taken to prepare these sales particulars, they are for guidance purposes only. All measurements are approximate and for general guidance purposes only and whilst every care has been taken to ensure their accuracy, they should not be relied upon and potential buyers are advised to recheck the measurements

INVESTORS IN PEOPLE
We invest in people Gold

PRS Property Redress Scheme

Proudly sponsoring



Awards

