



1 Lismore Place, Newtownabbey, BT37 0SZ

£950 Per Month



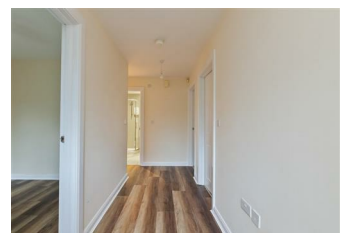
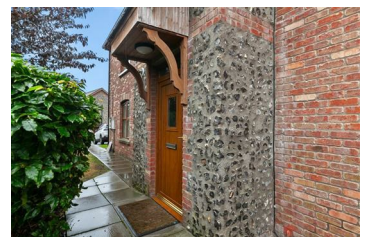
Immaculately presented, spacious, own door, three bedroom ground floor apartment, situated within the conveniently located and popular Lismore Place development, Jordanstown, Newtownabbey.

The property comprises private entrance hall, generous sized lounge open to kitchen through dining room, modern fitted kitchen, three well proportioned bedrooms, to include principal bedroom with en suite shower room, and separate family bathroom with four piece suite.

Externally, the property enjoys communal gardens and communal parking area.

Other attributes include gas fired central heating and PVC double glazing.

Early viewing highly recommended to avoid disappointment.



INVESTORS IN PEOPLE
We invest in people Gold

PRS Property
Redress
Scheme

Proudly sponsoring

 **Northern
Ireland
Children's
Hospice**

Awards

Telegraph
PROPERTY
AWARDS 2018
in partnership with 

Telegraph
PROPERTY
AWARDS 2019
in partnership with 

Shortlisted
TheNegotiator
Awards 2018

Shortlisted
TheNegotiator
Awards 2019

THE INVESTORS
IN PEOPLE
AWARDS 2019
Finalist

TheNegotiator
Regional Agency
of the Year
Northern Ireland
GOLD

**WE ARE
MACMILLAN.**
CANCER SUPPORT