



Exceptional countryside residence set on approximately seven acres in Drumbo, Lisburn

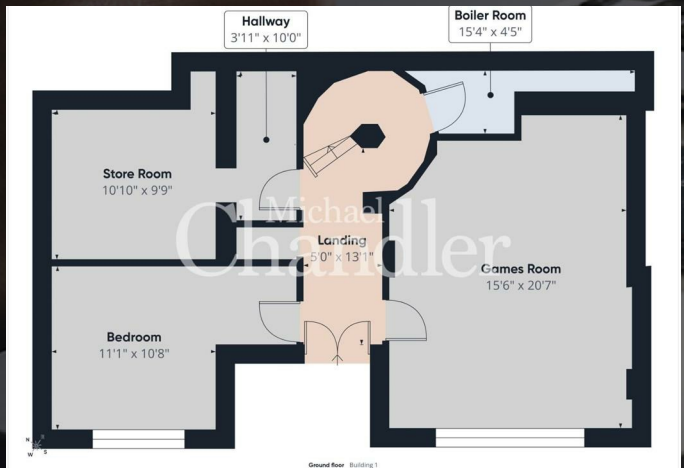
Private gated entrance with sweeping driveway approach

- 5
- 5
- 4





Stunning panoramic rural views from every level  
 Spacious accommodation arranged over three floors  
 Five reception rooms filled with character and charm  
 Classic fitted kitchen with dining and family space and a utility room  
 Elegant living room with a striking feature fireplace, views over the front gardens/fields and balcony access  
 Games room ideal for entertaining and family living  
 Five generous bedrooms, three with ensuite facilities  
 Vaulted dining room with a cosy snug area with an open fire  
 Bright sunroom overlooking the landscaped gardens  
 Extensive equestrian facilities including seven stables  
 Sand school with arena lighting and multiple outbuildings for livestock  
 Triple garage and excellent outdoor entertaining space  
 Situated in Drumbo, a sought-after rural setting close to Belfast and Lisburn, with excellent access to surrounding countryside, amenities, and transport links



A rare lifestyle opportunity combining luxury

02890 450 550

## Country Living Redefined!

This is more than a special home...this is what can only be described as a life-changing opportunity for one very lucky family! From the moment the gates open and you begin your journey up the long sweeping lane, it is clear you are about to discover something truly unique. Waking up every morning to stunning countryside views and approximately seven acres of your own land is something most people only dream about. Whether your passion is equestrianism, keeping livestock, outdoor adventures for the kids, or simply enjoying the freedom of your own land, this remarkable property offers a lifestyle that is hard to match. The home itself provides extensive accommodation for a large family, with an excellent selection of reception rooms, all filled with character, charm, and style.

Thoughtfully arranged over three floors, the property has been designed to maximise the spectacular surrounding views. The ground floor features a games room, storage room, and fourth bedroom, while a unique spiral staircase leads to the main living accommodation. The first floor offers a classic fitted kitchen with dining and family space, a utility room, and a spacious living room with a striking feature fireplace and balcony access.

Further reception space includes a family room, dining room with a cosy snug with open fire, and a bright sunroom connecting beautifully to the rear garden. The principal bedroom benefits from built-in robes and an ensuite shower room, while two additional double bedrooms also feature ensuites. A luxurious family bathroom includes a four piece suite and a fifth bedroom enjoys additional privacy on its own split level.

Outside, the grounds are equally impressive with landscaped gardens, multiple outbuildings, seven stables, a sand school with arena lighting, triple garage, and excellent entertaining space. Accessed via secure gates and a sweeping driveway, this outstanding home perfectly combines privacy, space, and countryside living.

**Asking Price £795,000**





Michael  
**Chandler**  
ESTATE AGENTS



Michael  
**Chandler**  
ESTATE AGENTS



Michael  
Chandler  
ESTATE AGENTS



Michael  
Chandler  
ESTATE AGENTS



Michael  
**Chandler**  
ESTATE AGENTS



Michael  
**Chandler**  
ESTATE AGENTS



Michael  
Chandler  
ESTATE AGENTS



Michael  
Chandler  
ESTATE AGENTS



**Mortgage advice is available from our in-house Mortgage Advisor, you can find out how much you can borrow within minutes!**

### REQUEST VALUATION

We would be delighted to visit your property and give you a Free Valuation and some helpful advice regarding the sale or rental of your property to you!

513 Ormeau Road, Belfast, BT7 3GU

**02890 450 550**

[property@michael-chandler.co.uk](mailto:property@michael-chandler.co.uk)

[michael-chandler.co.uk](http://michael-chandler.co.uk)

Michael  
**Chandler**  
ESTATE AGENTS