






A superb three bedroom semi-detached home close to the heart of Carryduff
Ideal for first-time buyers, young families and downsizers alike
Welcoming entrance hall with useful under stair storage
Spacious living room with a feature fireplace
Recently fitted contemporary kitchen with a range of integrated appliances
Open plan dining area ideal for modern family living and entertaining
Practical utility room plumbed for white goods and convenient ground floor WC

- 2 
- 3 
- 2 



Park Right Here!

This superb three bedroom semi-detached home offers spacious, well appointed accommodation ideally suited to first-time buyers, growing families and those seeking a convenient yet peaceful residential setting.

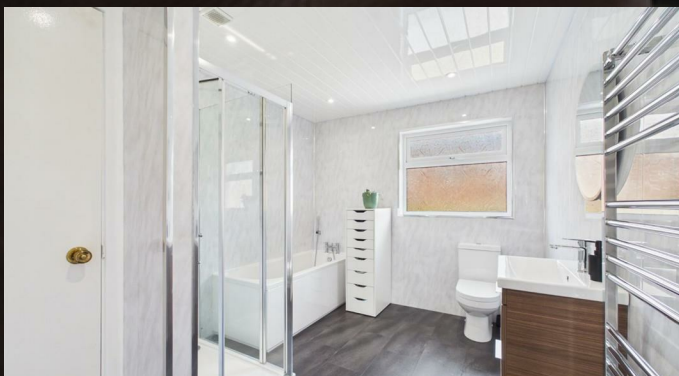
The property comprises a welcoming entrance hall complete with useful under stair storage, a spacious living room with a feature fireplace providing a comfortable space for relaxing. The recently fitted contemporary kitchen offers excellent storage and benefits from a selection of integrated appliances. Open plan to a generous dining area, this bright and sociable space is perfectly designed for modern family living. A practical utility room, plumbed for white goods, together with a convenient ground floor WC, further enhances the functionality of the home.

Upstairs there are three well proportioned bedrooms. The principal bedroom benefits from a walk-in wardrobe which is already plumbed and offers excellent potential for conversion into an en-suite shower room. Completing the accommodation is a luxurious family bathroom featuring a stylish four-piece suite including a separate bath and shower.

Outside, the front garden is laid in lawn with a tarmac driveway leading to a carport, providing excellent off-street parking. The fully enclosed rear garden has been thoughtfully designed with paving stones for low maintenance and includes a covered storage area, ideal for outdoor equipment and general storage requirements.

Alveston Park enjoys a convenient position within Carryduff and benefits from an excellent range of local amenities, a selection of highly regarded primary and post-primary schools and Belfast City Centre is easily accessible via regular public transport services and excellent road links to surrounding towns.

To arrange a viewing or for further information contact Michael Chandler Estate Agents on 02890 450 550 or email property@michael-chandler.co.uk



Mortgage advice is available from our in-house Mortgage Advisor, you can find out how much you can borrow within minutes!

REQUEST VALUATION

We would be delighted to visit your property and give you a Free Valuation and some helpful advice regarding the sale or rental of your property to you!

513 Ormeau Road, Belfast, BT7 3GU

02890 450 550

property@michael-chandler.co.uk

michael-chandler.co.uk

Michael
Chandler
ESTATE AGENTS