






A stunningly presented three-bedroom detached property located close to the heart of Lisburn
Excellent condition throughout with tasteful, modern décor
Bright and welcoming entrance hall
Beautiful living room featuring a striking feature fireplace
Spacious open-plan kitchen and dining area complete with built in appliances
Impressive sunroom overlooking the rear garden
Convenient downstairs WC
Two generously sized double bedrooms
Versatile third bedroom suitable as a guest room, home office or walk-in wardrobe

- 2 
- 3 
- 2 



Belle of the Ball!

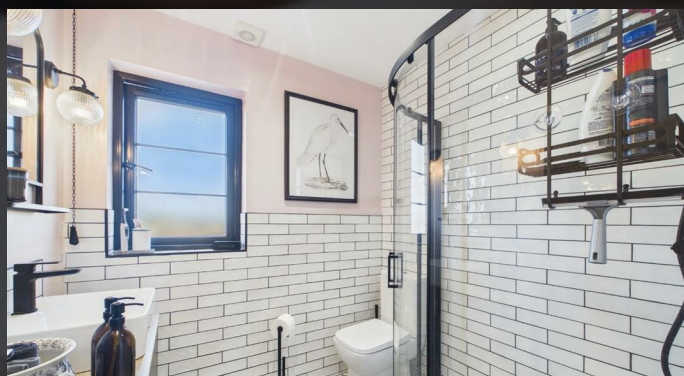
This is a fantastic opportunity to purchase a stunning three-bedroom detached home that offers a perfect blend of style, comfort, and modern living. This is a home that has been lovingly maintained and thoughtfully styled throughout, offering a turnkey opportunity for those seeking to live in a sought-after location.

Inside, you are greeted by a welcoming entrance hall that sets the tone for what lies beyond. The elegant living room is a true highlight of the home - tastefully decorated and centred around a stunning feature fireplace, creating a warm and inviting space ideal for relaxing evenings. To the rear, the property opens up into a superb open-plan kitchen and dining area. Thoughtfully designed and complete with built-in appliances, this space effortlessly combines practicality with contemporary style. Flowing seamlessly from here is a breath-taking sunroom, bathed in natural light and offering views over the rear garden. A convenient downstairs WC completes the ground floor.

Upstairs, the home continues to impress with two generously proportioned double bedrooms, along with a versatile third bedroom that can easily be adapted to suit your needs - whether as a guest room, home office, or walk-in wardrobe. The accommodation is finished with a beautifully appointed shower room, designed with a modern, high-end feel.

Outside, the property enjoys excellent kerb appeal with a tarmac driveway providing ample off-street parking, flanked by neatly maintained lawns. A fully enclosed garden offers both privacy and space, featuring a well-kept lawn and a stylish patio area - ideal for outdoor dining, entertaining, or simply enjoying the sunshine.

Perfectly situated on the periphery of Lisburn it is convenient to the city centre, various motorway networks connecting Belfast city centre and further afield, with Sprucefield Shopping Centre a short drive away.



Mortgage advice is available from our in-house Mortgage Advisor, you can find out how much you can borrow within minutes!

REQUEST VALUATION

We would be delighted to visit your property and give you a Free Valuation and some helpful advice regarding the sale or rental of your property to you!

513 Ormeau Road, Belfast, BT7 3GU

02890 450 550

property@michael-chandler.co.uk

michael-chandler.co.uk

Michael
Chandler
ESTATE AGENTS