

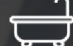
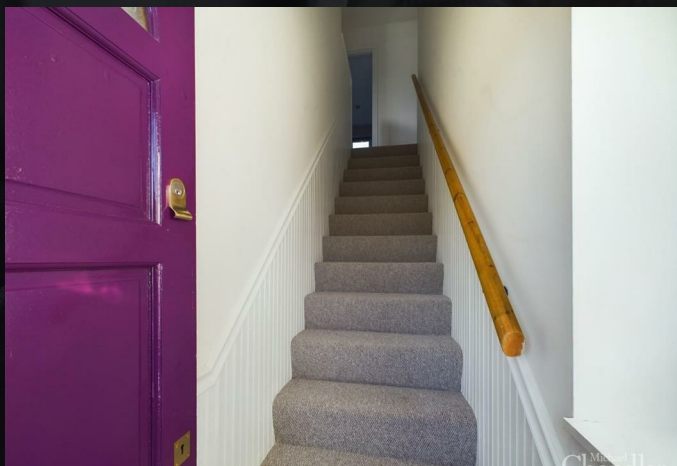




Add text here

- 1 
- 2 
- 1 





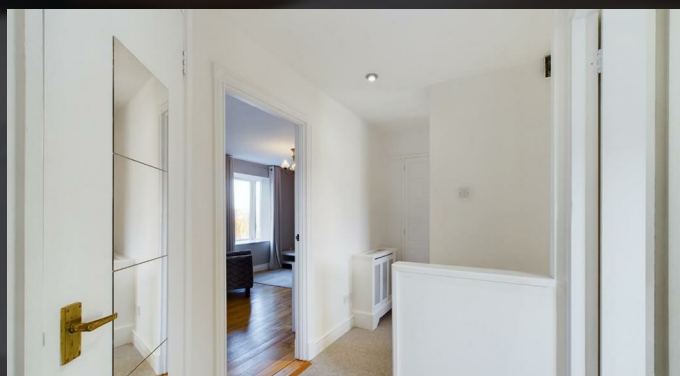
A superior two-bedroom apartment with ever-changing grandstand views out across the upper end of Belfast Lough, the Airport and across to the Antrim Hills in the distance.

This is a first-floor apartment set at the end of a quiet cul de sac with a private car parking space and all the refinement you could wish for.

The property has been completely refurbished throughout and is ready for occupation for a single or professional couple.

A deposit and the first month's rent are payable in advance. The property is furnished and available from 1st October 2025.

To arrange a viewing or for further information please contact Michael Chandler Estate Agents on 02890 450 550 or visit [www.michael-chandler.co.uk](http://www.michael-chandler.co.uk)



**Mortgage advice is available from our in-house Mortgage Advisor, you can find out how much you can borrow within minutes!**

### REQUEST VALUATION

We would be delighted to visit your property and give you a Free Valuation and some helpful advice regarding the sale or rental of your property to you!

513 Ormeau Road, Belfast, BT7 3GU

**02890 450 550**

[property@michael-chandler.co.uk](mailto:property@michael-chandler.co.uk)

[michael-chandler.co.uk](http://michael-chandler.co.uk)

Michael  
**Chandler**  
ESTATE AGENTS

Michael Chandler Estate Agents have endeavored to prepare these sales particulars as accurately and reliably as possible for the guidance of intending purchasers or lessees. These particulars are given for general guidance only and do not constitute any part of an offer or contract. The seller and agents do not give any warranty in relation to the property. We would recommend that all information contained in this brochure be verified by yourself or your professional advisors. Services, fittings and equipment referred to in the sales details have not been tested and no warranty is given to their condition, nor does it confirm their inclusion in the sale. All measurements contained within this brochure are approximate.