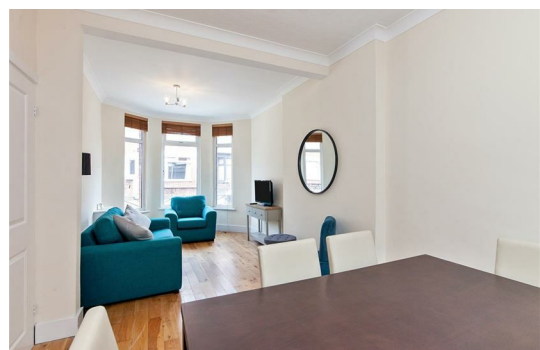
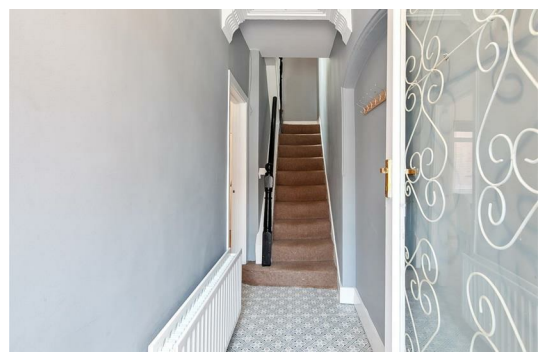
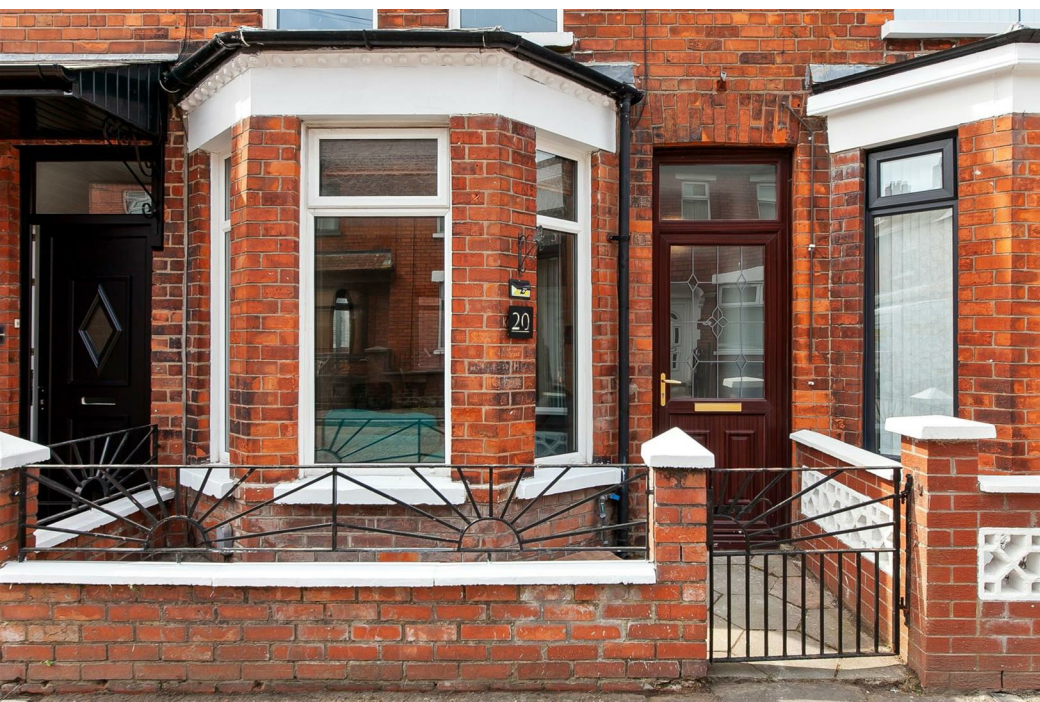




20 Lichfield Avenue
Belfast
BT5 5JQ



20 Lichfield Avenue
Belfast
BT5 5JQ



£1,100 Per month



Longstand Property presents 20 Lichfield Avenue to the rental market, a red-brick, two bedroom terrace with energy efficient C EPC rating, gas-fired central heating and two double bedrooms. Located in the Bloomfield area of East Belfast, the central location of the property provides easy access to Belfast city centre, Orangefield Park and the amenities of both Newtownards Road and Beersbridge Road.

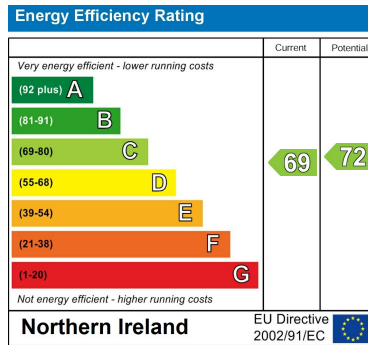
The accommodation comprises entrance hallway, open-plan living/dining space, contemporary kitchen and rear yard leading to alleyway on the ground floor. Upstairs, there are two double bedrooms and bathroom. Ample on street parking is available.

The property comes onto the market furnished and is available immediately on a minimum 12 month lease.

More about the location...

Located in the Bloomfield area of East Belfast, the property has an abundance of amenities within the vicinity. The shops, cafes and eateries of Newtownards Road are within a 10 minute walk as is Orangefield Park. Belfast city centre is less than 3 miles from the property and easily accessed by cycling, bus or car.





DIRECTIONS

CONTACT

14 Barnett's Road
 Belfast
 Antrim
 BT5 7BA

E: info@longstandproperty.com

T: 7732808952

longstandproperty.com

LONGSTAND