



CAMOWEN AVENUE

OMAGH

FERMAC
Properties Ltd

New Development Camowen Avenue, Hospital Road Omagh, BT79 0AP



Omagh's Premier Private Residential Development
Forever starts here...

Take some time now to view our house types, site layout,
specification, extras and why you should choose us to build your
brand new forever home.

Prices from £204,950

Viewing

Please contact our Homepage NI Office on 08000465102
if you wish to arrange a viewing appointment for this
property or require further information.



Energy Efficiency Rating		
	Current	Potential
Very energy efficient - lower running costs		
(92 plus) A		
(81-91) B		
(69-80) C		
(55-68) D		
(39-54) E		
(21-38) F		
(1-20) G		
Not energy efficient - higher running costs		
Northern Ireland		EU Directive 2002/91/EC
Environmental Impact (CO ₂) Rating		
	Current	Potential
Very environmentally friendly - lower CO ₂ emissions		
(92 plus) A		
(81-91) B		
(69-80) C		
(55-68) D		
(39-54) E		
(21-38) F		
(1-20) G		
Not environmentally friendly - higher CO ₂ emissions		
Northern Ireland		EU Directive 2002/91/EC

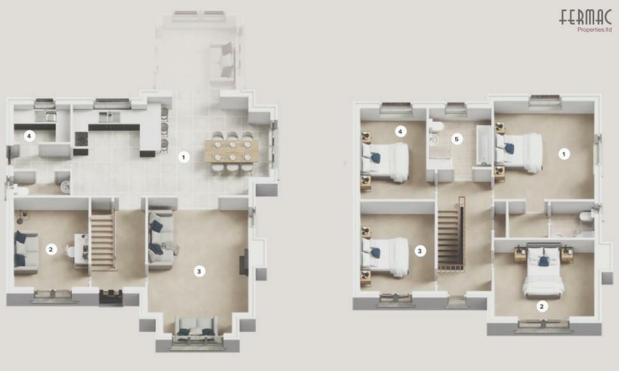
Site Plan

- The Panacea (HTA)**
 4 Bedroom Detached House
 Plot 145
- The Florence (HTB)**
 4 Bedroom Detached House
 Plots 105, 112, 137, 146, 152, 164
- The Nightingale (HTC)**
 4 Bedroom Detached House
 Plots 138, 142, 144, 148, 151, 161
- The Harbour (HTD)**
 4 Bedroom Detached House
 Plots 141, 143, 147, 162, 163
- The Cherish (HTF)**
 3 Bedroom Detached House
 Plots 106, 107, 117, 120, 126, 127, 128, 129, 139, 140, 149, 150
- The Agnes (HTH)**
 3 Bedroom Semi-detached House
 Plots 80, 102, 103, 104, 108, 109, 110, 113, 114, 115, 116, 118, 119, 121, 122, 124, 125, 130, 132, 133, 134
- The Jones (HTH1)**
 3 Bedroom Semi-detached House
 Plots 79, 101, 111, 131, 135

FERMAC
Properties Ltd



The Panacea (HTA)
4 Bedroom Detached
Plots: 145



Ground Floor

- KITCHEN/DINING 8.5m x 4.3m (28'1" x 14'1")
- FAMILY ROOM 3.9m x 3.1m (12'8" x 10'0")
- LOUNGE 5.0m x 4.1m (16'5" x 13'4")
- UTILITY 2.3m x 1.6m (7'7" x 7'0")

First Floor

- MASTER BEDROOM 4.3m x 4.1m (14'1" x 13'4")
- BEDROOM 2 4.1m x 3.3m (13'6" x 10'7")
- BEDROOM 3 3.8m x 3.1m (12'6" x 10'0")
- BEDROOM 4 4.0m x 2.7m (13'2" x 8'10")
- BATHROOM 2.6m x 2.5m (8'6" x 8'1")

The Florence
(House Type B)



The Florence (HTB)
4 Bedroom Detached
Plots: 137, 146, 152, 164



Ground Floor

- KITCHEN/DINING 6.1m x 3.6m (20'1" x 11'9")
- LOUNGE 4.7m x 4.0m (15'5" x 13'2")
- SNUG 2.4m x 2.3m (7'9" x 7'7")
- UTILITY 1.8m x 2.7m (5'10" x 8'10")

First Floor

- MASTER BEDROOM 3.9m x 4.6m (12'8" x 15'2")
- BEDROOM 2 3.3m x 2.9m (10'9" x 9'6")
- BEDROOM 3 2.8m x 2.7m (9'2" x 8'10")
- BEDROOM 4 2.2m x 3.6m (7'3" x 11'8")
- BATHROOM 2.2m x 2.9m (7'2" x 9'7")

The Nightingale
(House Type C)



These particulars, whilst believed to be accurate are set out as a general outline only for guidance and do not constitute any part of an offer or contract. Intending purchasers should not rely on them as statements of representation of fact, but must satisfy themselves by inspection or otherwise as to their accuracy. No person in this firm's employment has the authority to make or give any representation or warranty in respect of the property.

Homepage Estate Agents

Tel: 08000465102 | Email: info@clickhomepage.online

www.clickhomepage.online

