



## First Floor The Rock, Sea Road Castlerock, BT51 4RA



Enjoy the very best apartment living in one of Northern Ireland's blue beaches. Situated on the outstanding North Coast, the seaside village of Castlerock offers the perfect Tranquille retreat from the hustle and bustle of everyday life.

Whether its winning and dining in the array of outstanding restaurants on the North Coast, frolicking on the beach, walking the grounds of Bishop's Gate, visiting the iconic ruins of the medieval Dunluce Castle, Bushmills Distillery, Dark Hedges, Carrick-a-Reed rope bridge or exploring the celebrated World Heritage site known as the Giants Causeway, there is something for everyone.

What's more with the Atlantic Ocean as your front garden you can enjoy a morning swim, surfing, windsurfing and kite surfing. For the golf enthusiasts, Castlerock Golf club is one the finest lynx courses on offer in Ireland, with Portstewart and Royal Portrush only a short wedge away.

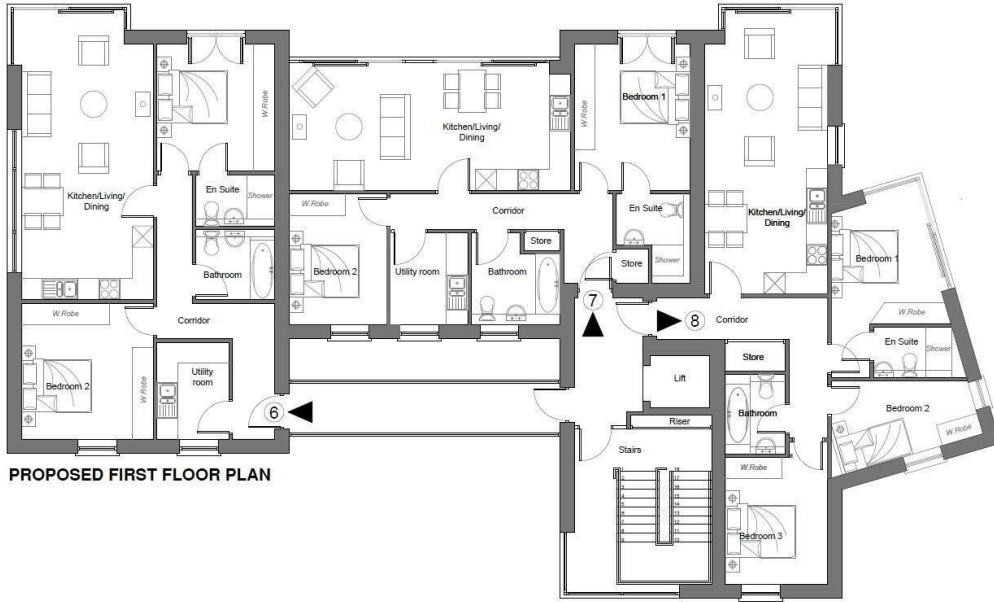
With some of the country's most breath-taking scenery right on your doorstep, these new apartments in Castlerock offer you the ideal 'home from home' for anyone who wants to enjoy the very best life on the North Coast.

### Prices from £500,000



#### Viewing

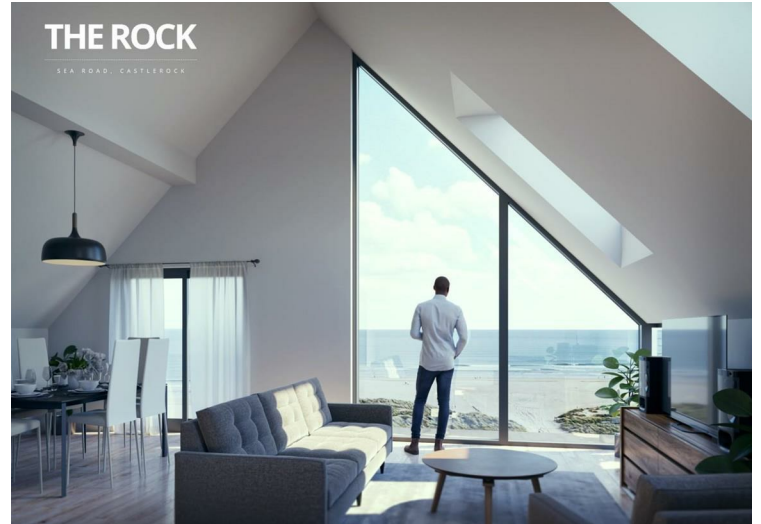
Please contact our Homepage NI Office on 08000465102 if you wish to arrange a viewing appointment for this property or require further information.





PROPOSED FIRST FLOOR PLAN

Energy Efficiency Rating		
	Current	Potential
Very energy efficient - lower running costs		
(92 plus) <b>A</b>		
(81-91) <b>B</b>		
(69-80) <b>C</b>		
(55-68) <b>D</b>		
(39-54) <b>E</b>		
(21-38) <b>F</b>		
(1-20) <b>G</b>		
Not energy efficient - higher running costs		
Northern Ireland		EU Directive 2002/91/EC 
Environmental Impact (CO <sub>2</sub> ) Rating		
	Current	Potential
Very environmentally friendly - lower CO <sub>2</sub> emissions		
(92 plus) <b>A</b>		
(81-91) <b>B</b>		
(69-80) <b>C</b>		
(55-68) <b>D</b>		
(39-54) <b>E</b>		
(21-38) <b>F</b>		
(1-20) <b>G</b>		
Not environmentally friendly - higher CO <sub>2</sub> emissions		
Northern Ireland		EU Directive 2002/91/EC 



These particulars, whilst believed to be accurate are set out as a general outline only for guidance and do not constitute any part of an offer or contract. Intending purchasers should not rely on them as statements of representation of fact, but must satisfy themselves by inspection or otherwise as to their accuracy. No person in this firm's employment has the authority to make or give any representation or warranty in respect of the property.

Homepage Estate Agents  
 Tel: 08000465102 | Email: info@clickhomepage.online  
 www.clickhomepage.online

