

For Sale

Asking Price: £295,000

SimonBrien



Sharman House Apartment,
Crawfordsburn,
BT19 1XN

simonbrien.com



KEY FEATURES

- Spacious first floor apartment offering flexible living with views towards Belfast Lough
- Fitted kitchen with integrated appliances and ample dining space
- Bright and spacious living area with original features remaining
- Two double bedrooms with fitted wardrobes
- Master bedroom with ensuite shower room
- Main family bathroom suite
- Impressive common areas and entrance
- Communal maintained gardens, parklands and tennis court
- Intercom entry system
- Gas fired central heating
- Secure entrance to development via electric gates
- Front line situation with the North Down coastal paths on the doorstep, and a short walk to Crawfordsburn Village

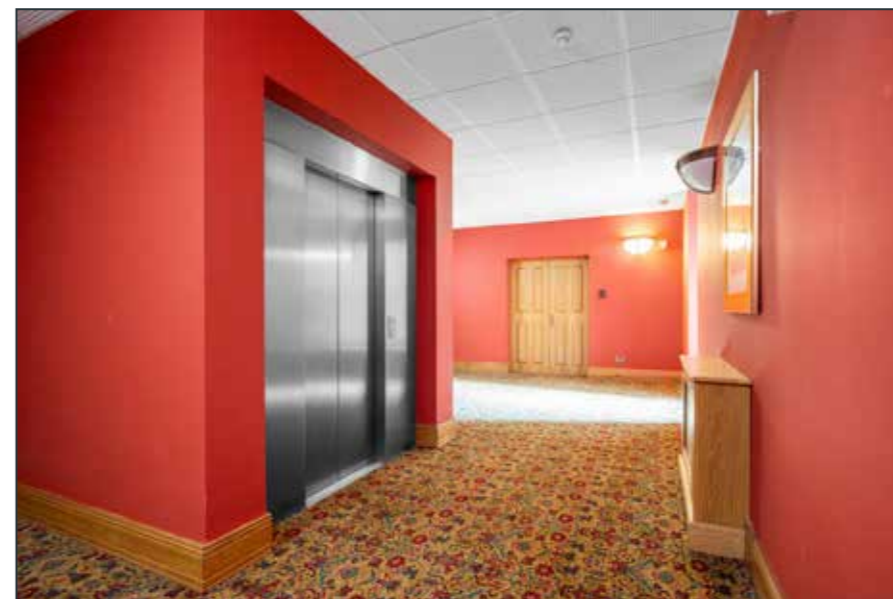
SUMMARY

Located on the picturesque North Down landscape, Sharman House is one of North Down's premier apartment developments overlooking Belfast Lough. The development is set within spacious communal grounds and has wide appeal to a broad spectrum of purchasers.

This apartment is spacious and comprises of a large living and dining space with original features, cornicing and beautiful views across the communal gardens and towards Belfast Lough. The kitchen is fully fitted with integrated appliances and casual dining. In addition, there are two double bedrooms with built-in wardrobes and an ensuite shower room and a main bathroom.

The property benefits from gas central heating and an intercom entry system. The main development is accessed via electric gates with ample parking space outside the main front door for residents and guests.

A delightful, secure environment in which to live, surrounded by mature, maintained gardens with tennis court, helipad, and shoreline frontage the location is the perfect place to live and is sure to be of widespread interest to many.



THE PROPERTY COMPRISES:

GROUND FLOOR

ENTRANCE:

Communal front door with video intercom system leading to first floor.



FIRST FLOOR

ENTRANCE HALL:

Inner entrance door with glazed side panels.



HALLWAY:

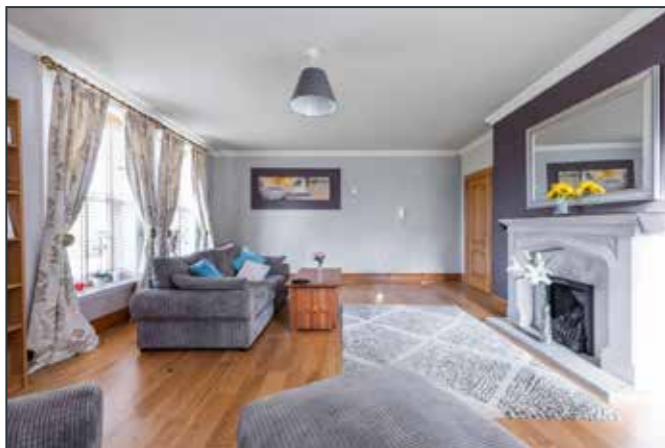
Intercom system, corniced ceiling

Telephone 02890 428989
www.simonbrien.com

LOUNGE:

20' 07" x 17' 04" (6.27m x 5.28m)

Solid oak floor with corniced ceiling



KITCHEN:

15' 07" x 15' 06" (4.75m x 4.72m)

Range of high and low level units, integrated appliances including washing machine, dishwasher, double under oven, stainless steel four ring gas hob with overhead extractor, fitted fridge and freezer. Polished black granite work tops with 1.5 bowl stainless steel sink unit and mixer tap and drainer. Partly tiled walls. Ceramic tiled floor. Ample dining space.





BEDROOM (1):
15' 03" x 14' 03" (4.65m x 4.34m)



BATHROOM:
Low flush WC. Chrome heated towel rail. Wash hand basin in vanity unit with mixer taps. Panelled bath with mixer taps and telephone hand shower. Fully tiled walls. Extractor fan.



ENSUITE SHOWER ROOM:
Fully tiled corner shower cubicle, low flush WC. Pedestal wash hand basin. Heated towel rail. Fully tiled walls and extractor fan.



BEDROOM (2):
12' 06" x 10' 08" (3.81m x 3.25m)





VALUER

Ryan McAvoy

Simon Brien - Holywood
48 High Street, Holywood
Co. Down, BT18 9AE
T: 028 9042 8989
E: holywood@simonbrien.com

MORTGAGE ADVICE

For free independent advice on mortgages talk to
Crawford Mulholland
503 Lisburn Road, Belfast,
Co. Antrim, BT9 7EZ
T: 028 9066 5544
E: office@crawfordmulholland.com

SimonBrien



simonbrien.com

Simon Brien Residential for themselves and for the Vendors or Lessors of the property whose agents they are give notice that; i) these particulars are given without responsibility of Simon Brien Residential or the Vendors or Lessors as a general outline only, for the guidance of prospective purchasers or tenants, and do not constitute the whole or any part of an offer or contract, ii) Simon Brien Residential cannot guarantee the accuracy of any description, dimensions, references to condition, necessary permissions for use and occupation and other details contained herein and any prospective purchasers or tenants should not rely on them as statements or representations of fact but must satisfy themselves by inspection or otherwise as to the accuracy of each of them; iii) no employee of Simon Brien Residential has any authority to make or give any representation or warranty or enter into any contract whatsoever in relation to the property, iv) VAT may be payable on the purchase price and/or rent, all figures are quoted exclusive of VAT, intending purchasers or lessees must satisfy themselves as to the applicable VAT position, if necessary by taking appropriate professional advice; v) Simon Brien Residential will not be liable, in negligence or otherwise, for any loss arising from the use of these particulars.