



7 Swallow Field

, Portadown, BT62 3SE

This well-presented three-bedroom semi-detached home is ideally located in the thriving town of Portadown, close to local amenities, schools, and transport links. Featuring a brand new fitted kitchen, freshly painted interiors, and a large driveway with ample off-street parking, this property is ready to move into.

Offering bright, comfortable living space in a sought-after area, this is an ideal opportunity for first-time buyers looking to step onto the property ladder. Early viewing is highly recommended.

Offers over £155,000

7 Swallow Field

, Portadown, BT62 3SE



- Freshly decorated bedroom semi detached property in this popular residential development in Portadown
- Brand new fitted kitchen
- Bright living room with feature sandstone fireplace
- First floor family bathroom
- Large stoned driveway
- Fully enclosed rear
- Oil fired central heating

Entrance Hall

Bathroom

Living Room

7'11 x 6'8 (2.41m x 2.03m)

15'1 x 11'8 (4.60m x 3.56m)

Outside

Kitchen/Dining

18'5 x 9'8 (5.61m x 2.95m)

Landing

Bedroom 1

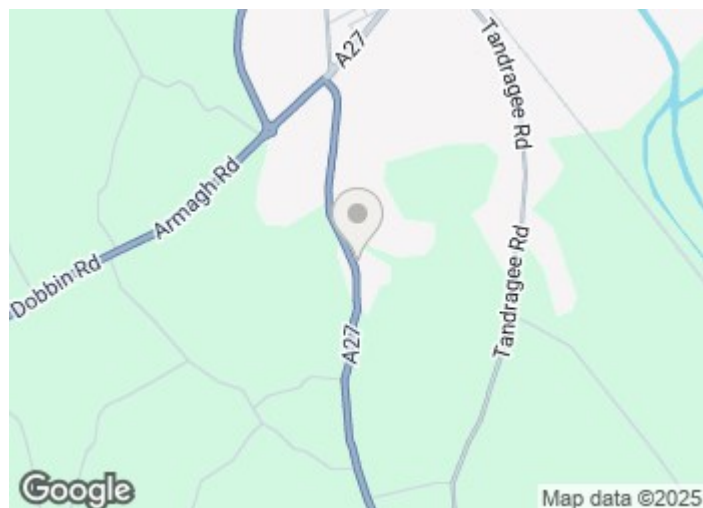
11'9 x 11'7 (3.58m x 3.53m)

Bedroom 2

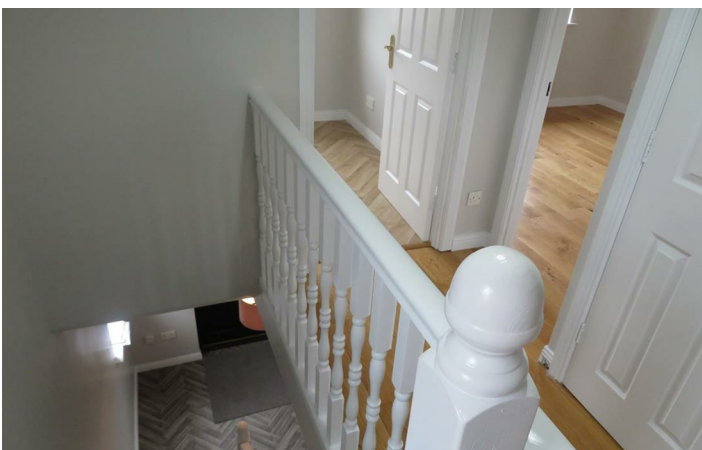
11'1 x 10'4 (3.38m x 3.15m)

Bedroom 3

7'9 x 7'8 (2.36m x 2.34m)



Directions





Floor Plan

These particulars, whilst believed to be accurate are set out as a general outline only for guidance and do not constitute any part of an offer or contract. Intending purchasers should not rely on them as statements of representation of fact, but must satisfy themselves by inspection or otherwise as to their accuracy. No person in this firms employment has the authority to make or give any representation or warranty in respect of the property.

