



688 Saintfield Road, Carryduff, Belfast, BT8 8BU

Asking Price £315,000

688 Saintfield Road sits just beyond the Carryduff roundabout offering superb convenience to the local shops as well as the new Lidl Store, main arterial routes to Saintfield, Ballynahinch, Lisburn and Belfast.

Nestled behind mature trees to the front, the Bungalow is positioned on a lovely mature site, that offers spacious, well proportioned accommodation comprising three good sized bedrooms, lounge with a wood burning stove, fitted kitchen open to dining / living area, guest w/c and large family bathroom suite.

The property also benefits from a gas heating system and double glazing.

Outside there is a driveway with ample parking and space to turn at the rear, detached garage and superb garden and patio areas that capture the sun at different times of the day.

This is a fantastic home with little or nothing to do but add furniture.

- Recently Refurbished Detached Bungalow
- Lounge With Wood Burning Stove
- Guest W/C
- Gas Heating/Double Glazing
- Detached Garage
- Three Bedrooms
- Fitted Kitchen / Dining / Living To The Rear
- White Bathroom Suite With Separate Shower
- Driveway With Ample Parking & Space To Turn At The Rear
- Superb Enclosed Rear Gardens

Energy Efficiency Rating		Current	Potential
(92-100) A	Very energy efficient - lower running costs		
(81-91) B			
(69-80) C			
(55-68) D			
(39-54) E			
(21-38) F			
(1-20) G	Not energy efficient - higher running costs		

Northern Ireland
EU Directive 2002/91/EC



Entrance Hall



Pvc front door to entrance porch. Terrazzo flooring. Glass panelled inner door to hallway. Oak flooring.

Lounge 12'2 x 12'2 (3.71m x 3.71m)



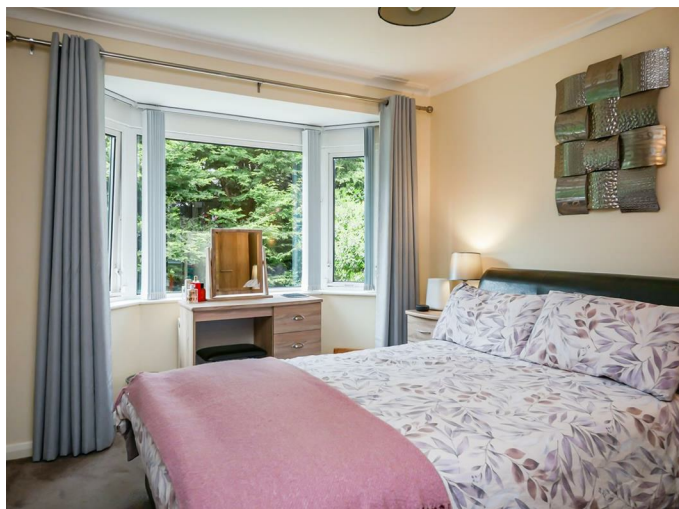
(into bay) Oak flooring. Cast iron stove.

Fitted Kitchen/Dining 20'7 x 15'4 (6.27m x 4.67m)



Shaker Fitted Kitchen comprising granite worktops, single drainer sink unit with mixer taps, integrated fridge freezer, built in microwave, integrated dishwasher, breakfast bar area. with granite worktop, Utility Cupboard, housing gas boiler. Tiled flooring to kitchen area. Oak flooring to living area.

Bedroom One 13'0 x 11'3 (3.96m x 3.43m)



(into bay) (at widest points)

Bedroom Two 13'0 x 10'0 (3.96m x 3.05m)



(into bay) Laminate flooring.

Bedroom Three 10'9 x 9'8 (3.28m x 2.95m)



(at widest points)

White Bathroom Suite



Comprising free standing oval bath with mixer taps, wash hand basin with mixer taps, low flush w.c Separate corner shower cubicle with chrome shower unit. Heated chrome towel rail. Fully tiled walls. Tiled flooring,

Landing

Clean air system. Access to roofspace via fold down ladder. Light and power.

Outside Front

Front garden laid in lawn. Driveway with ample parking leading to rear.

Detached Garage 15'0 x 12'10 (4.57m x 3.91m)



Roller door. Light and power.

Outside Rear



Enclosed rear garden laid lawn. Patio area that captures afternoon sun.



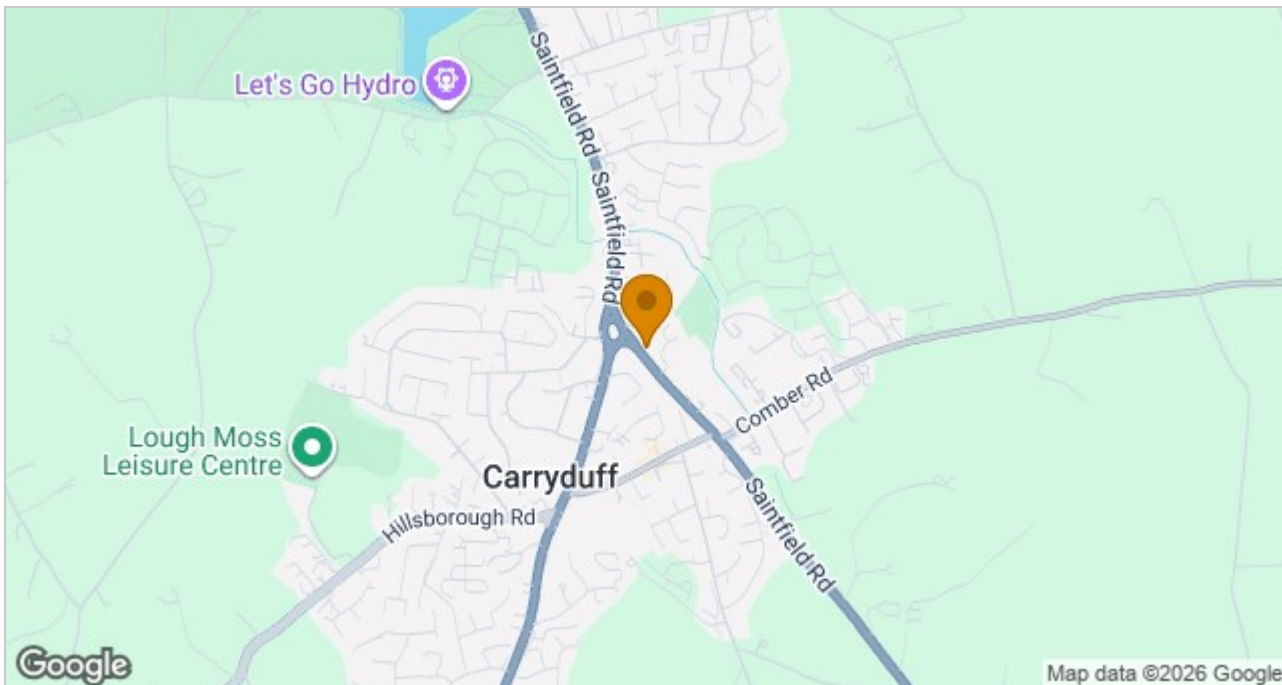


Floor Plan

Ground Floor



Area Map



These particulars, whilst believed to be accurate are set out as a general outline only for guidance and do not constitute any part of an offer or contract. Intending purchasers should not rely on them as statements of representation of fact, but must satisfy themselves by inspection or otherwise as to their accuracy. No person in this firm's employment has the authority to make or give any representation or warranty in respect of the property.

ULSTERPROPERTYSALES.CO.UK

ANDERSONSTOWN
028 9060 5200
BALLYHACKAMORE
028 9047 1515
BALLYNAHINCH
028 9756 1155

BANGOR
028 9127 1185
CARRICKFERGUS
028 9336 5986
CAVEHILL
028 9072 9270

DONAGHADEE
028 9188 8000
DOWNPATRICK
028 4461 4101
FORETSIDE
028 9064 1264

GLENGORMLEY
028 9083 3295
MALONE
028 9066 1929
NEWTOWNARDS
028 9181 1444

RENTAL DIVISION
028 9070 1000



Forestsides Estates Ltd; Trading under licence as Ulster Property Sales (Forestsides) Reg. No. N1051121; Registered Office: 9 Upper Crescent, Belfast BT7 1NT ©Ulster Property Sales is a Registered Trademark