



28 Wynchurch Avenue, Belfast, BT6 0JQ

Asking Price £359,950

With a double storey extension to the rear and completely renovated throughout, this semi detached home represents an excellent opportunity for those hoping to purchase within the Upper Ormeau, Rosetta area.

Although this property appears from the external image to be a traditional Semi Detached home, this home has been opened up and extended to the rear, creating a contemporary, spacious kitchen / dining area, whilst retaining the original lounge to the front. A downstairs contemporary bathroom suite, three bedrooms and shower suite on the first floor completes the internal accommodation. Outside there is a tarmac driveway with ample parking to the front and side with the former garage converted to a utility space or could even be used as a home office as there is light & power and enclosed rear patio & garden.

Wynchurch Avenue has consistently been a popular street that provides easy access to the host of amenities on offer, from Forestside Shopping Centre, leading schools, transport links, and all the cafés, restaurants and entertainment facilities of the Ormeau Road. An excellent home in a great location.

- Extended & Modernised Semi Detached Home
- Spacious Lounge To The Front
- Downstairs Bathroom
- Gas Heating / Double Glazing
- Former Garage Converted To Utility / Store Or Possible Office
- Three Double Bedrooms Plus Study Area
- Kitchen / Dining / Living To The Rear
- First Floor Shower Suite
- Driveway With Parking To Front
- Enclosed Rear Garden

Energy Efficiency Rating			
	Current	Potential	
Very energy efficient - lower running costs			
(92 plus) A			
(81-91) B			
(69-80) C			
(55-68) D			
(39-54) E			
(21-38) F			
(1-20) G			
Not energy efficient - higher running costs			
Northern Ireland			
EU Directive 2002/91/EC			

Entrance



Glass panelled front door with glazed side panels to entrance hall, decorative tiled floor.

Lounge 13'5 x 13'1 (4.09m x 3.99m)



(at widest points) Decorative fire place with wooden surround and matching wood panelling. Laminate flooring in herringbone style.



Shaker Kitchen/Dining/Living 21'2 x 17'6 (6.45m x 5.33m)



Full range of high and low level units, work tops, built in hob and under oven, overhead extractor fan, single drainer 1 1/4 bowl stainless steel sink unit with mixer taps. Integrated dishwasher, integrated fridge freezer. Centre island with matching work top. matching units in contrasting colour. Breakfast bar. Pvc glass panelled doors to patio. Spot-lights. Laminate flooring in herringbone style.





Downstairs Bathroom Suite



Comprising free standing oval bath with wall mounted mixer taps, wash hand basin with mixer taps, low flush w.c Wood paneling.
Decorative tiled floor.

First Floor

Landing

Storage area. Access to the roof space.

Bedroom Two 12'1 x 10'3 (3.68m x 3.12m)



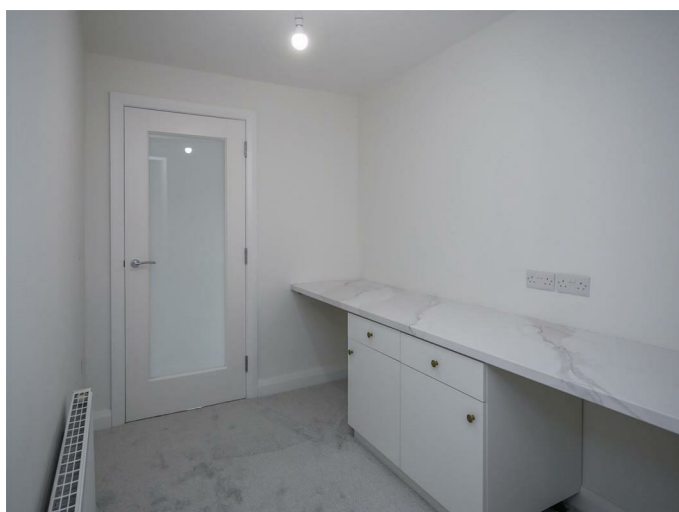
Bedroom Three 10'7 x 8'5 (3.23m x 2.57m)



White Shower Suite



Inner Landing



Possible Study or dressing area with storage.

Bedroom One 12'9 x 10'8 (3.89m x 3.25m)



Comprising corner shower cubicle with chrome shower unit with Drench head and hand shower attachment, wash hand basin with mixer taps, low flush w.c Heated chrome towel rail.

Outside Front



**Garden laid in lawn.
Tarmac driveway with ample parking.**

Outside Rear



From kitchen there is direct access to the enclosed flagged patio area, leading to garden laid in lawn. Bordered by mature hedging. Outside tap.



Purpose Built Utility Area 11'6 x 9'0 (3.51m x 2.74m)

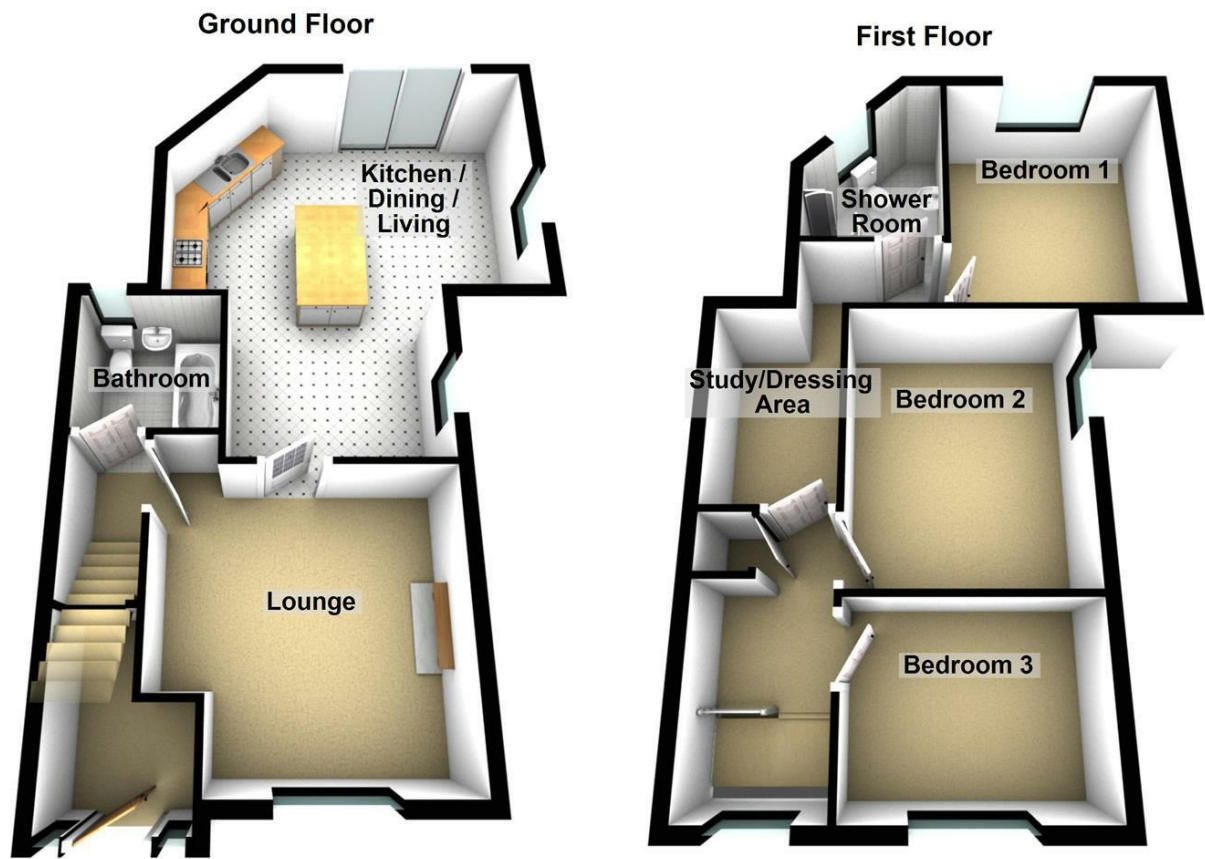


Range of units. Sink unit with mixer taps.

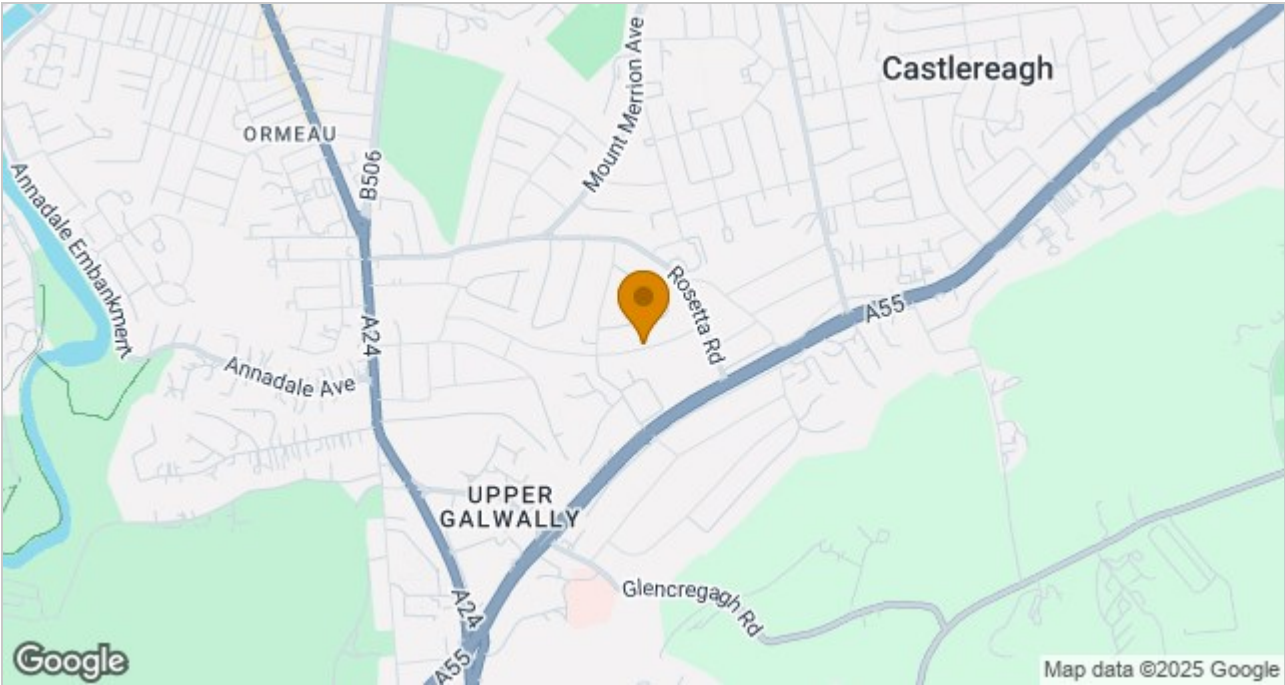
Light and power. Housing gas boiler. Plumbed for washing machine.



Floor Plan



Area Map



These particulars, whilst believed to be accurate are set out as a general outline only for guidance and do not constitute any part of an offer or contract. Intending purchasers should not rely on them as statements of representation of fact, but must satisfy themselves by inspection or otherwise as to their accuracy. No person in this firms employment has the authority to make or give any representation or warranty in respect of the property.

ULSTERPROPERTYSALES.CO.UK