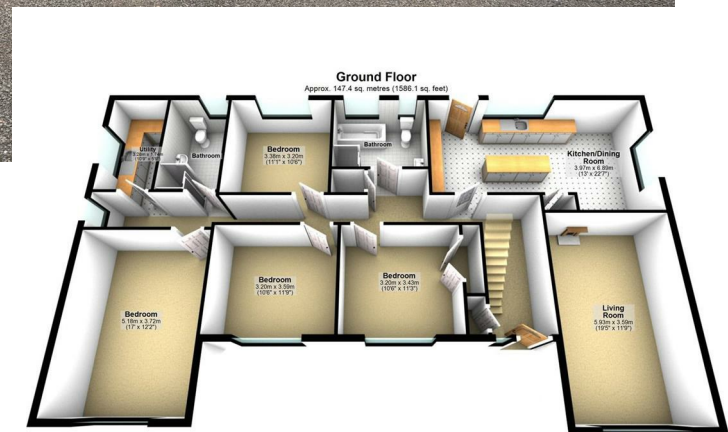


# 27 Thornhill Road, Antrim, BT41 2LH



Total area: approx. 302.2 sq. metres (3252.4 sq. feet)

Photos and Plans by houseplan.co.uk  
Plan produced using PlanUp.

27 Thornhill Road, Antrim

**PRICE Offers**  
**Over £374,950**

**>Sales >New Homes >Commercial >Rentals >Mortgages**

**Antrim**  
12 Church Street  
BT41 4BA  
Tel: (028) 9446 6777

**Ballyclare**  
51 Main Street  
BT39 9AA  
Tel: (028) 9334 0726

**Glengormley**  
9A Ballyclare Road  
BT36 5EU  
Tel: (028) 9083 0803



**Nestled on Thornhill Road in Antrim, this splendid four-bedroom detached bungalow offers a perfect blend of comfort and modern living. Spanning an impressive 1,586 square feet, the property boasts a spacious lounge area, ideal for both relaxation and entertaining guests. The heart of the home is a contemporary kitchen, featuring a full range of light grey woodgrain effect units and an informal dining area, complemented by a separate utility room for added convenience.**

**The bungalow is designed with practicality in mind, offering two well-appointed bathrooms. The luxury bathroom suite includes a panel bath and a glazed shower cubicle, while an additional shower room with a W/C ensures ample facilities for family and guests alike.**

**For those seeking a workspace or additional leisure area, the property benefits from a fixed open tread staircase to first floor storage together with a detached double garage with a home office above, complete with a kitchen area and shower room with W/C. This versatile space is perfect for remote working or hobbies.**

**In addition, the property also benefits from a large steel fabricated shed with anti-drip roof ideal for the car enthusiast or collector.**

**The exterior of the property is equally impressive, featuring parking for up to ten vehicles and a superb rural site with drive-in, drive-out access. Enjoy breathtaking views over the open countryside from both the front and rear of the home, creating a serene and picturesque setting.**

**With PVC double glazed windows, oil-fired central heating, and PVC fascia and soffits, this bungalow combines modern amenities with a charming rural lifestyle.**

**This property is a rare find, offering both space and tranquillity in a desirable location.**

**FEATURES Don't miss the opportunity to make this delightful bungalow your new home.**

- Entrance hall with open tread fixed staircase to floored storage
- Living room 19'5 x 11'6 with open fire, back boiler, mahogany surround and polished cast iron inset
- Kitchen with informal dining 23'0 x 11'10 / Full range of light grey coloured woodgrain effect contemporary style high and low level units and centre island
- Four well proportioned bedrooms to include principal with full range of integrated bedroom furniture
- Family bathroom with modern white suite to include panel bath and fully glazed shower cubicle with drench head shower / Tiled effect PVC panelled walls
- Separate shower room with easy access shower cubicle and electric shower unit / Low flush W/C
- and pedestal wash hand basin / PVC panelled walls and ceiling
- Utility room with range of white country style high and low level units
- Steel fabricated garage 23'1 x 16'7 / Additional detached block built double garage with twin roller shutter doors / Adjoining boiler house and W/C / External staircase to;
- Above Garage apartment / home office with full kitchen facility and shower room with W/C
- PVC double glazed windows / Composite front door / Oil-fired central heating / PVC fascia and soffits / Drive in Drive out access with twin gates

## ACCOMMODATION

Tarmac drive in and out driveway with wrought iron gates to both sides. Low rise brick wall. Neat lawn. Open fronted entrance porch with tiled floor and PVC ceiling. Outside lighting. Composite door with sidelight to;

### ENTRANCE HALL

Open tread staircase to first floor storage with moulded handrail and turned balustrading. Cloaks closet. Double radiator.



### LIVING ROOM 19'5" x 11'6" (5.919 x 3.519)

Wood laminate flooring. Television points. Broadband points. Feature open fire with back boiler, decorative mahogany surround, part polished cast iron inset and polished granite hearth. Double radiator.



### KITCHEN WITH INFORMAL DINING 23'1" x 11'0" (7.050 x 3.355)

Fully range of light grey woodgrain effect contemporary style high and low level kitchen units with contrasting work services. Space for range style cooker with black pyramid style overhead extractor fan and black glass splashback. Large matching kitchen island with additional storage and breakfast bar style seating. Space for an 'American' style fridge freezer. Fully tiled floor. Full PVC panelled walls and ceiling. Double radiator.



## REAR HALL

Hot press with insulated copper cylinder and shelving. Ramped wheelchair access to side. PVC double glazed door to the side. Single radiator.

## UTILITY ROOM 10'10" x 5'8" (3.303 x 1.730 )

Range of white country style high and low level units with complimentary work surfaces. One and a quarter bowl stainless steel sink unit with chrome mixer tap. Display cabinets. Space for washing machine and tumble dryer. Fully tiled flooring. Single radiator.



## BEDROOM 1 16'11" x 12'4" (5.167 x 3.768)

Wood laminate flooring. Range of integrated bedroom storage with clothing rails, drawers and vanity table with mirror. Large picture window over looking the surrounding countryside. Double radiator.



## BEDROOM 2 11'2 x 10'5 (3.40m x 3.18m )

Wood laminate flooring. Integrated storage cupboard. Double radiator.



### BEDROOM 3 11'1" x 10'5" (3.379 x 3.184)

Wood laminate flooring. Double radiator.



### BEDROOM 4 11'9" x 10'4" (3.585 x 3.171)

Part wood panelled walls. Recessed spot lights. Double radiator.



### BATHROOM 9'7" x 9'7" (2.943 x 2.943)

Modern white four piece suite comprising panel bath with feature chrome mixer tap and shower attachment. Enclosed mains shower with 'Drench' shower head, secondary attachment and partially glazed door. Moulded sink in vanity unit with feature chrome mixer taps and storage below. Push button low flush W/C. PVC wood effect flooring. Tiled effect PVC walls. PVC ceiling. Chrome heated towel radiator.



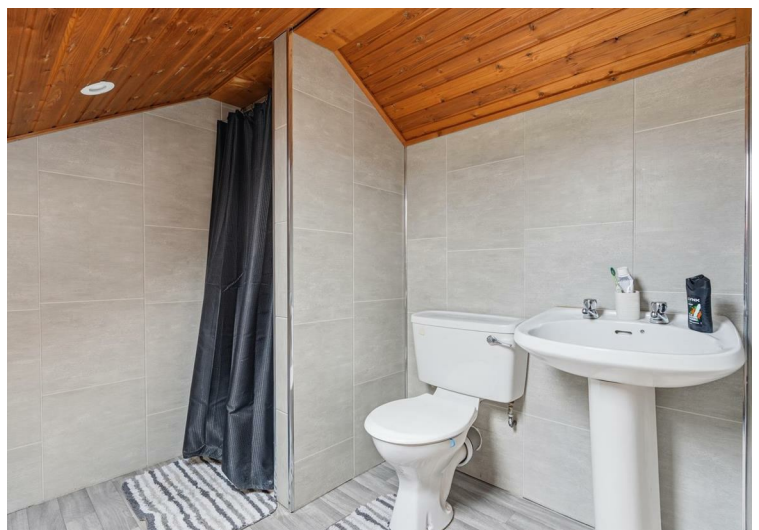
## **SHOWER ROOM 10'8" x 6'2" (3.269 x 1.881 )**

Modern white suite comprising walk in shower with 'Triton T80' electric shower unit and glazed screen. Pedestal wash hand basin with chrome 'monobloc' mixer tap. Push button low flush W/C. PVC wood effect flooring. PVC walls. Extractor fan. Single radiator.



## **FIRST FLOOR LANDING**

Double glazed roof light. Wood laminate flooring. Double radiator. Access to partially floored loft. Access to two floored storage rooms.



## **OUTSIDE**

Low level brick walls with matching pillars and twin matching wrought iron feature gates providing a drive in / drive out tarmac driveway and parking for up to six cars. Timber vehicular gate to side providing access to fully enclosed yard area at rear.

Part tarmac and part concrete yard area to the rear. Superb privacy. Raised timber decking. Outside tap and lighting. Pathway to side leading to steel fabricated stairs to home office over garage. Perimeter wall with wrought iron railings and rear wall with timber fencing above. Access to;

## **STEEL FABRICATED GARAGE 23'1" x 16'7" (7.046 x 5.065)**

Steel fabricated garage with non drip ceiling. Strip lighting. Roller door. Power and lighting. Service door to side.

## **DEATCHED GARAGE**

Twin roller doors. Service door to side. Power and lighting. Outside toilet. Boiler house plumbed for a washing machine.

External staircase to;



**ABOVE GARAGE APARTMENT 17'5" x 13'7" (at max) (5.313 x 4.160 (at max))**

Full range of beech effect high and low level kitchen units, with contrasting work surfaces and upstands. Integrated four ring halogen hob with stainless steel pyramid style overhead extractor fan and stainless steel splashback. Low level combination oven and grill. Single drainer, stainless steel sink unit with chrome mixer tap. Views over the surrounding countryside. Wood laminate flooring. Single radiator. PVC panelled ceiling. Door to;

**BEDROOM / HOME OFFICE 13'8" x 8'6" (4.171 x 2.591 )**

Wood laminate flooring. Dual aspect windows. Single radiator.

**SHOWER ROOM**

Modern white suite comprising enclosed quadrant shower with 'Mira Jump' electric shower, PVC panelled walls and partially glazed sliding door. Pedestal wash hand basin with stainless steel, hot and cold taps. Push button low flush W/C. Extractor fan. Wood laminate flooring.

**IMPORTANT NOTE TO ALL POTENTIAL PURCHASERS;**

Please note, none of the services or appliances have been tested at this property.

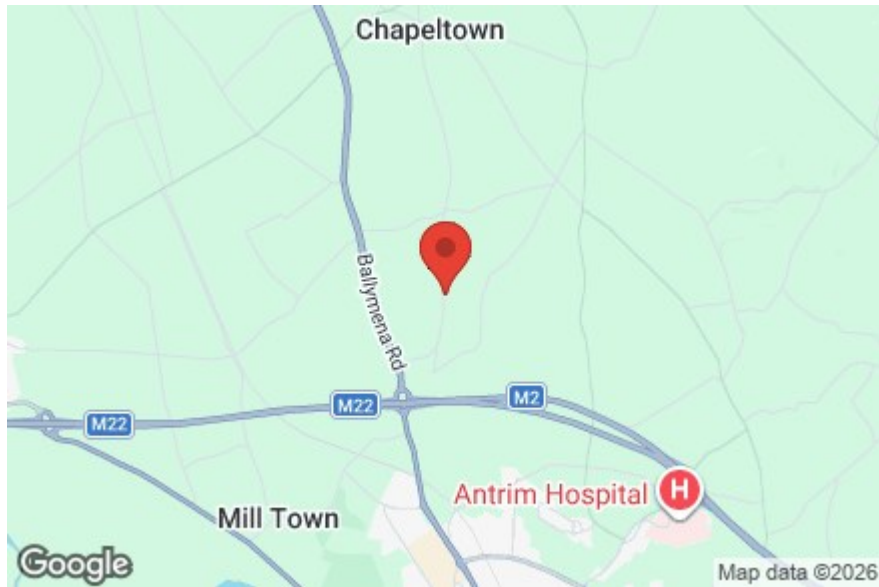
Please also be aware, property boundaries are an estimation and are to be confirmed via your solicitor.





### Energy Efficiency Rating

	Current	Potential
<i>Very energy efficient - lower running costs</i>		
(92 plus) <b>A</b>		
(81-91) <b>B</b>		
(69-80) <b>C</b>		
(55-68) <b>D</b>		<b>59</b>
(39-54) <b>E</b>	<b>43</b>	
(21-38) <b>F</b>		
(1-20) <b>G</b>		
<i>Not energy efficient - higher running costs</i>		
<b>Northern Ireland</b>	EU Directive 2002/91/EC	



## Mortgage **IQ**

**Talk to one of our advisers today**

12 Church Street, Antrim, Co. Antrim, BT41 4BA  
**T: 028 9417 0000**  
**E: antrim@mortgageiq.co.uk**

# IQ

WE KNOW WHAT IT TAKES

Country Estates (N.I.) Ltd. for themselves and the Vendors of this property whose agents are, give notice that:

These particulars do not constitute any part of an offer or contract

All statements contained in these particulars as to this property are made without responsibility on the part of Country Estates (N.I.) Ltd. or the vendor

None of the statements contained in these particulars as to this property are to be relied on as statements or representations of fact

Any intending purchaser must satisfy himself or otherwise as to the correctness of the statement contained in these particulars

The vendor does not make or give, and neither Country Estates (N.I.) Ltd. nor any person in their employment, has any authority to make or give representation or warranty whatever in relation to this property.

