



4 Bann Meadows, Ballymoney, BT53 7RL

Offers Over £315,000



4



2



2



0 / 0

Welcome to this exquisite detached house located in the desirable Bann Meadows on Bann Road, Ballymoney. Built in 2010, this modern property boasts a high-quality specification that is sure to impress. With four spacious bedrooms, it provides ample room for families or those seeking extra space for guests or a home office.

The house features two inviting reception rooms, perfect for entertaining or relaxing with loved ones. The well-designed layout ensures a comfortable flow throughout the home, making it an ideal setting for both everyday living and special occasions.

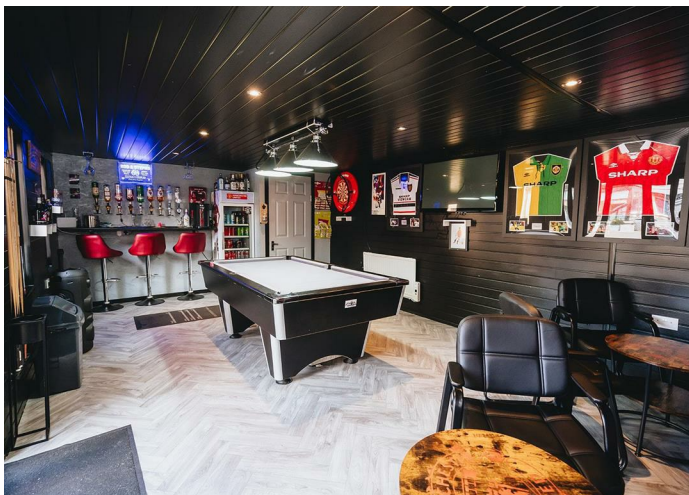
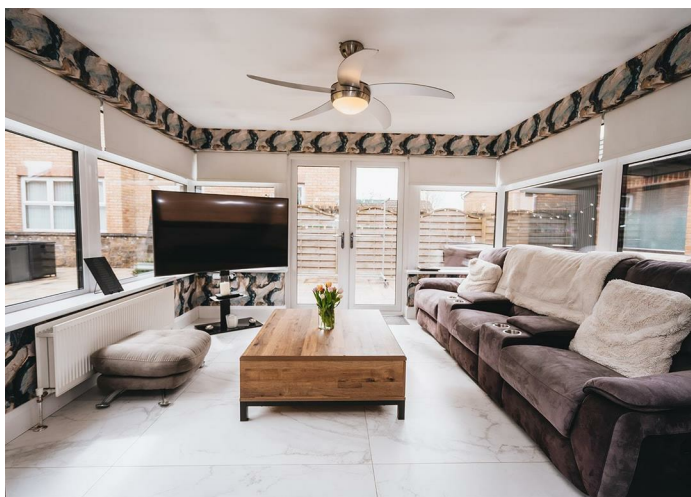
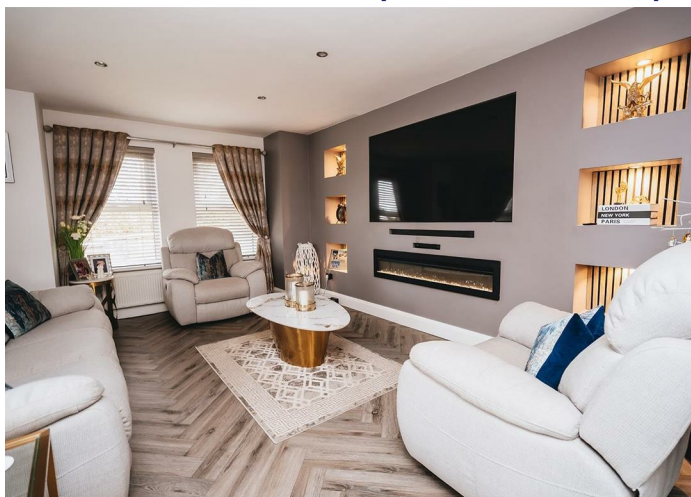
You will appreciate the two well-appointed bathrooms, which add convenience and comfort to your daily routine. The property is enhanced by triple glazed uPVC double glazed windows, ensuring excellent insulation and energy efficiency, while the stylish black ash uPVC fascia adds a contemporary touch to the exterior.

Parking is a breeze with space for up to three vehicles, and the property includes a detached garage, providing additional storage or workshop space. For those who enjoy outdoor leisure, the separate summer house currently serves as a bar, offering a delightful retreat for entertaining friends or unwinding after a long day.

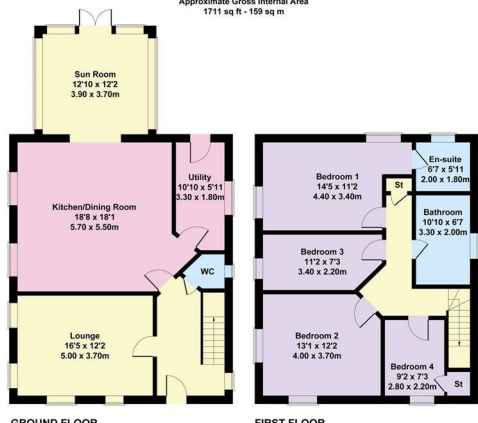
Situated at the front of the development, this home enjoys a prime location within the community, making it easily accessible. With its modern features and thoughtful design, this property is a fantastic opportunity for anyone looking to settle in a vibrant area of Ballymoney. Don't miss your chance to make this stunning house your new home.

EPC - Ordered & Will Follow

- Stunning Detached House with Detached Garage
- 4 x Bedroom (Master Ensuite)
- High Specification Interior
- Gas Heating
- Solid Oak Internal Doors & Trim Throughout
- Landscaped Garden with Summer House
- 2 x Reception Room
- 42mm uPVC Triple Glazed Windows
- Black Ash uPVC Fascia & Soffits
- Choice Site Which Faces Onto The Bann Road



4 Bann Meadows
Approximate Gross Internal Area
1711 sq ft - 159 sq m



Not to Scale. Produced by The Plan Portal 2026
For Illustrative Purposes Only.

