



26a Churchill Place Waringstown, Craigavon, BT66 7QS

Offers over **£134,950**



Set within the popular Churchill Place development in Waringstown, this well-presented three-bedroom end terrace offers a practical and well-balanced layout, ideal for first-time buyers or investors alike.

The property opens into a spacious living room with an attractive open fireplace, creating a comfortable and welcoming setting. To the rear, there is a modern open plan kitchen diner with double doors leading out to the garden, providing an excellent space for both everyday living and entertaining. A separate utility room with matching units adds to the functionality, along with a convenient ground floor WC.

Upstairs, the accommodation comprises three well-proportioned bedrooms. The primary bedroom benefits from an en suite with mains shower, while the remaining two bedrooms are both generous doubles. The family bathroom is finished with a four-piece suite, including both a bath and separate shower.

Externally, the front of the property offers a neat lawn with pathway, and the rear has been designed for ease of maintenance with a pebbled and concrete finish, suitable for parking or outdoor use.

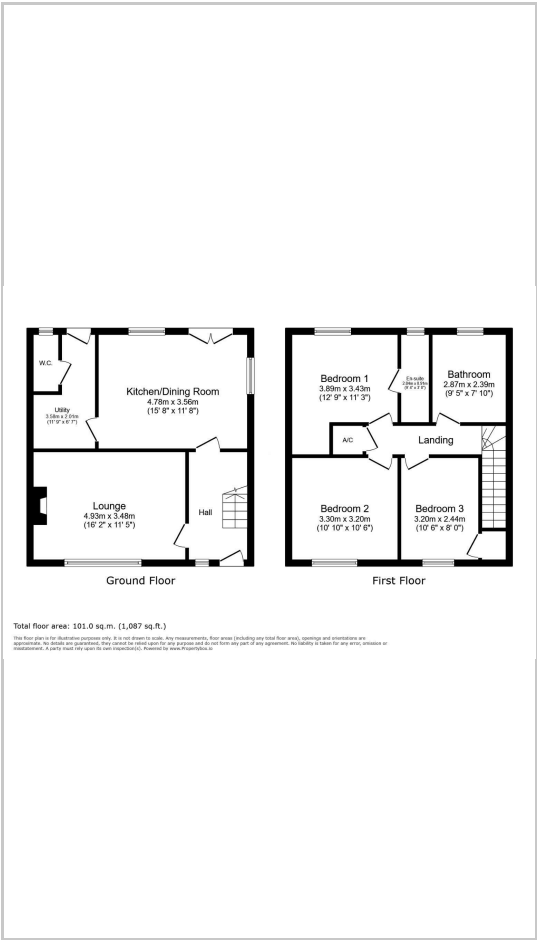
Additional features include PVC double glazing, oil-fired central heating, and the advantage of being vacant and chain-free, allowing for a straightforward purchase. Ideally located close to local schools, amenities, and motorway links, this home offers both convenience and value, with offers over £134,950.



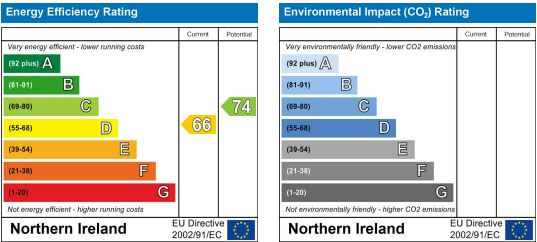
Area Map



Floor Plans



Energy Efficiency Graph



These particulars, whilst believed to be accurate are set out as a general outline only for guidance and do not constitute any part of an offer or contract. Intending purchasers should not rely on them as statements of representation of fact, but must satisfy themselves by inspection or otherwise as to their accuracy. No person in this firm's employment has the authority to make or give any representation or warranty in respect of the property.